

For Research Use Only

TMED2 Polyclonal antibody

Catalog Number: 11981-1-AP

8 Publications



Basic Information

Catalog Number:

11981-1-AP

Size:

150ul, Concentration: 1000 ug/ml by Nanodrop;

Source:

Rabbit

Isotype:

IgG

Immunogen Catalog Number:

AG2607

GenBank Accession Number:

BC025957

GeneID (NCBI):

10959

UNIPROT ID:

Q15363

Full Name:

transmembrane emp24 domain trafficking protein 2

Calculated MW:

201 aa, 23 kDa

Observed MW:

20-23 kDa

Purification Method:

Antigen affinity purification

Recommended Dilutions:

WB 1:1000-1:4000

IHC 1:20-1:200

Applications

Tested Applications:

WB, IHC, ELISA

Cited Applications:

WB, IHC, IF

Species Specificity:

human, mouse, rat

Cited Species:

human, mouse

Note-IHC: suggested antigen retrieval with TE buffer pH 9.0; (*) Alternatively, antigen retrieval may be performed with citrate buffer pH 6.0

Positive Controls:

WB : HEK-293 cells, mouse pancreas tissue, mouse skin tissue, mouse liver tissue, HeLa cells, rat kidney tissue

IHC : human pancreas cancer tissue,

Notable Publications

Author	Pubmed ID	Journal	Application
Shulin Li	34561617	Cell Res	WB
Xihua Yue	34493279	BMC Biol	WB
Hak Park	35748162	Adv Sci (Weinh)	WB

Storage

Storage:

Store at -20°C. Stable for one year after shipment.

Storage Buffer:

PBS with 0.02% sodium azide and 50% glycerol pH 7.3.

Aliquoting is unnecessary for -20°C storage

*** 20ul sizes contain 0.1% BSA

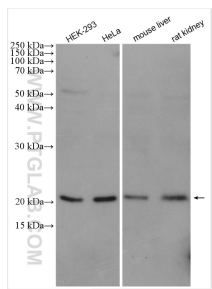
For technical support and original validation data for this product please contact:

T: 1 (888) 4PTGLAB (1-888-478-4522) (toll free in USA), or 1(312) 455-8498 (outside USA)

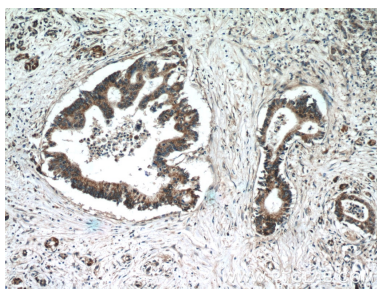
E: proteintech@ptglab.com
W: ptglab.com

This product is exclusively available under Proteintech Group brand and is not available to purchase from any other manufacturer.

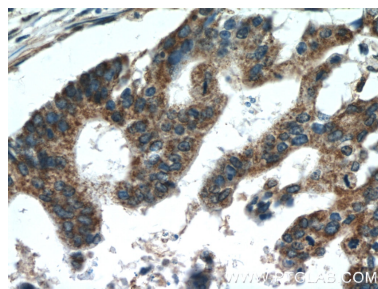
Selected Validation Data



Various lysates were subjected to SDS PAGE followed by western blot with 11981-1-AP (TMED2 antibody) at dilution of 1:4000 incubated at room temperature for 1.5 hours.



Immunohistochemical analysis of paraffin-embedded human pancreas cancer tissue slide using 11981-1-AP (TMED2 Antibody) at dilution of 1:50 (under 10x lens).



Immunohistochemical analysis of paraffin-embedded human pancreas cancer tissue slide using 11981-1-AP (TMED2 Antibody) at dilution of 1:50 (under 40x lens).