

For Research Use Only

ROBO3 Polyclonal antibody

Catalog Number: 11982-1-AP



Basic Information

Catalog Number:

11982-1-AP

Size:

150ul, Concentration: 550 ug/ml by Nanodrop;

Source:

Rabbit

Isotype:

IgG

Immunogen Catalog Number:

AG2608

GenBank Accession Number:

BC008623

GeneID (NCBI):

64221

UNIPROT ID:

Q96MS0

Full Name:

roundabout, axon guidance receptor, homolog 3 (Drosophila)

Calculated MW:

148 kDa

Observed MW:

200-250 kDa, 148 kDa

Purification Method:

Antigen affinity purification

Recommended Dilutions:

WB 1:500-1:1000

Applications

Tested Applications:

WB, ELISA

Species Specificity:

human, mouse

Positive Controls:

WB : Neuro-2a cells, SH-SY5Y cells, Y79 cells

Background Information

ROBO3 belongs to the immunoglobulin superfamily and ROBO family. ROBO3 is thought to be involved during neural development in axonal navigation at the ventral midline of the neural tube. In spinal cord development, it plays a role in guiding commissural axons probably by preventing premature sensitivity to Slit proteins thus inhibiting Slit signaling through ROBO1. It is required for hindbrain axon midline crossing. Defects in ROBO3 are a cause of familial horizontal gaze palsy with progressive scoliosis (HGPPS).

Storage

Storage:

Store at -20°C. Stable for one year after shipment.

Storage Buffer:

PBS with 0.02% sodium azide and 50% glycerol pH 7.3.

Aliquoting is unnecessary for -20°C storage

*** 20ul sizes contain 0.1% BSA

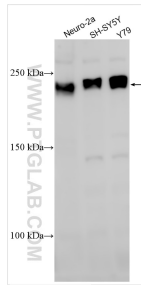
For technical support and original validation data for this product please contact:

T: 1 (888) 4PTGLAB (1-888-478-4522) (toll free in USA), or 1(312) 455-8498 (outside USA)

E: proteintech@ptglab.com
W: ptglab.com

This product is exclusively available under Proteintech Group brand and is not available to purchase from any other manufacturer.

Selected Validation Data



Various lysates were subjected to SDS PAGE followed by western blot with 11982-1-AP (ROBO3 antibody) at dilution of 1:500 incubated at room temperature for 1.5 hours.