

For Research Use Only

PRTFDC1 Polyclonal antibody

Catalog Number: 11986-1-AP

1 Publications



Basic Information

Catalog Number:

11986-1-AP

Size:

150ul, Concentration: 850 ug/ml by Nanodrop and 367 ug/ml by Bradford method using BSA as the standard;

Source:

Rabbit

Isotype:

IgG

Immunogen Catalog Number:

AG2614

GenBank Accession Number:

BC008662

GeneID (NCBI):

56952

UNIPROT ID:

Q9NRG1

Full Name:

phosphoribosyl transferase domain containing 1

Calculated MW:

225 aa, 26 kDa

Observed MW:

26 kDa

Purification Method:

Antigen affinity purification

Recommended Dilutions:

WB 1:500-1:1000

IP 0.5-4.0 ug for 1.0-3.0 mg of total protein lysate

IHC 1:20-1:200

IF/ICC 1:50-1:500

Applications

Tested Applications:

WB, IHC, IF/ICC, IP, ELISA

Cited Applications:

WB

Species Specificity:

human, mouse

Cited Species:

mouse

Note-IHC: suggested antigen retrieval with TE buffer pH 9.0; (*) Alternatively, antigen retrieval may be performed with citrate buffer pH 6.0

Positive Controls:

WB : fetal human brain tissue, human brain tissue, Y79 cells

IP : mouse brain tissue,

IHC : human ovary tumor tissue,

IF/ICC : HeLa cells,

Notable Publications

Author	Pubmed ID	Journal	Application
Keebaugh Elaine C AC	21818316	PLoS One	WB

Storage

Storage:

Store at -20°C. Stable for one year after shipment.

Storage Buffer:

PBS with 0.02% sodium azide and 50% glycerol pH 7.3.

Aliquoting is unnecessary for -20°C storage

*** 20ul sizes contain 0.1% BSA

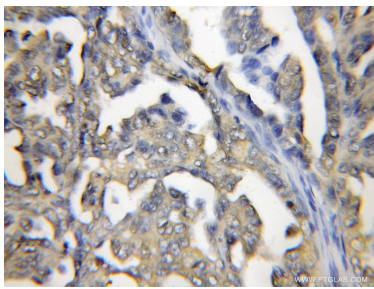
For technical support and original validation data for this product please contact:

T: 1 (888) 4PTGLAB (1-888-478-4522) (toll free in USA), or 1(312) 455-8498 (outside USA)

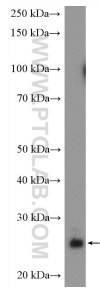
E: proteintech@ptglab.com
W: ptglab.com

This product is exclusively available under Proteintech Group brand and is not available to purchase from any other manufacturer.

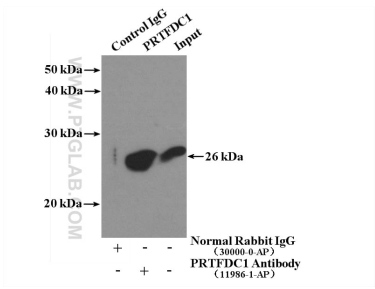
Selected Validation Data



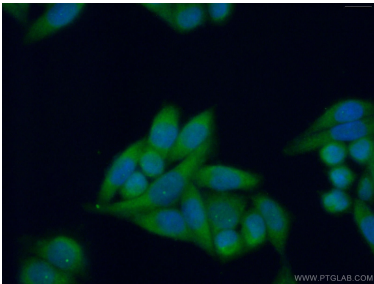
Immunohistochemical analysis of paraffin-embedded human ovary tumor using 11986-1-AP (PRTFDC1 antibody) at dilution of 1:50 (under 10x lens).



fetal human brain tissue were subjected to SDS PAGE followed by western blot with 11986-1-AP (PRTFDC1 Antibody) at dilution of 1:600 incubated at room temperature for 1.5 hours.



IP result of anti-PRTFDC1 (IP:11986-1-AP, 4ug; Detection:11986-1-AP 1:600) with mouse brain tissue lysate 4000ug.



Immunofluorescent analysis of (4% PFA) fixed HeLa cells using 11986-1-AP (PRTFDC1 antibody) at dilution of 1:50 and Alexa Fluor 488-conjugated Goat Anti-Rabbit IgG(H+L).