

For Research Use Only

# Glutamate receptor 2 Polyclonal antibody

Catalog Number: 11994-1-AP

43 Publications



## Basic Information

### Catalog Number:

11994-1-AP

### Size:

150ul, Concentration: 600 ug/ml by Nanodrop;

### Source:

Rabbit

### Isotype:

IgG

### Immunogen Catalog Number:

AG2662

### GenBank Accession Number:

BC010574

### GeneID (NCBI):

2891

### UNIPROT ID:

P42262

### Full Name:

glutamate receptor, ionotropic, AMPA 2

### Calculated MW:

883 aa, 99 kDa

### Observed MW:

94-105 kDa

### Purification Method:

Antigen affinity purification

### Recommended Dilutions:

WB 1:2000-1:12000

IP 0.5-4.0 ug for 1.0-3.0 mg of total protein lysate

IHC 1:50-1:500

IF-P 1:50-1:500

## Applications

### Tested Applications:

WB, IHC, IF-P, IP, ELISA

### Cited Applications:

WB, IHC, IF, IP, CoIP

### Species Specificity:

human, mouse, rat

### Cited Species:

human, mouse, rat

**Note-IHC: suggested antigen retrieval with TE buffer pH 9.0; (\*) Alternatively, antigen retrieval may be performed with citrate buffer pH 6.0**

### Positive Controls:

WB : mouse brain tissue, rat brain tissue

IP : mouse brain tissue,

IHC : mouse brain tissue,

IF-P : mouse eye tissue,

## Background Information

Glutamate receptors are the predominant excitatory neurotransmitter receptors in the mammalian brain and are activated in a variety of normal neurophysiologic processes. GRIA2 (glutamate receptor 2, GluR-2) belongs to a family of glutamate receptors that are sensitive to alpha-amino-3-hydroxy-5-methyl-4-isoxazole propionate (AMPA), and function as ligand-activated cation channels that mediate the fast component of excitatory postsynaptic currents in neurons of the central nervous system. These channels are assembled from 4 related subunits, GRIA1-4. The presence of GRIA2 in the heteromeric AMPA receptors impermeabilizes it to calcium, preventing possible calcium-mediated toxicity.

## Notable Publications

Author	Pubmed ID	Journal	Application
Pengcheng Ma	36179027	Sci Adv	WB, CoIP
YuanYuan Hou	34710402	Exp Neurol	WB
Joanna Gruszczynska-Biegala	27826230	Front Cell Neurosci	WB

## Storage

### Storage:

Store at -20°C. Stable for one year after shipment.

### Storage Buffer:

PBS with 0.02% sodium azide and 50% glycerol pH 7.3.

Aliquoting is unnecessary for -20°C storage

\*\*\* 20ul sizes contain 0.1% BSA

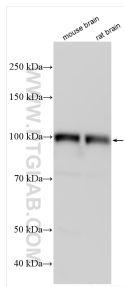
For technical support and original validation data for this product please contact:

T: 1 (888) 4PTGLAB (1-888-478-4522) (toll free in USA), or 1(312) 455-8498 (outside USA)

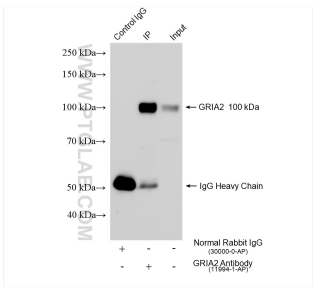
E: proteintech@ptglab.com  
W: ptglab.com

This product is exclusively available under Proteintech Group brand and is not available to purchase from any other manufacturer.

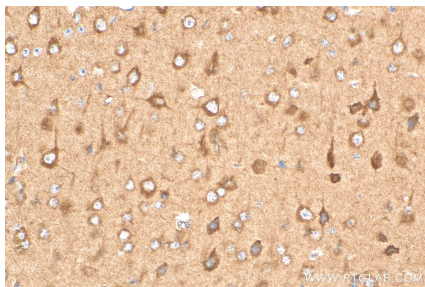
Selected Validation Data



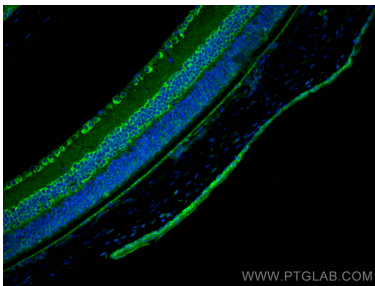
Various lysates were subjected to SDS PAGE followed by western blot with 11994-1-AP (Glutamate receptor 2 antibody) at dilution of 1:6000 incubated at room temperature for 1.5 hours.



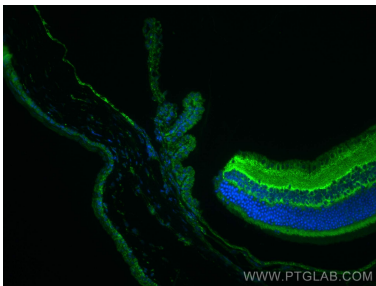
IP result of anti-Glutamate receptor 2 (IP:11994-1-AP, 4ug; Detection:11994-1-AP 1:2000) with mouse brain tissue lysate 2100 ug.



Immunohistochemical analysis of paraffin-embedded mouse brain tissue slide using 11994-1-AP (Glutamate receptor 2 antibody) at dilution of 1:200 (under 40x lens). Heat mediated antigen retrieval with Tris-EDTA buffer (pH 9.0).



Immunofluorescent analysis of (4% PFA) fixed paraffin-embedded mouse eye tissue using Glutamate receptor 2 antibody (11994-1-AP) at dilution of 1:400 and CoraLite® 488-Conjugated AffiniPure Goat Anti-Rabbit IgG(H+L) (SA00013-2). Heat mediated antigen retrieval with Tris-EDTA buffer (pH 9.0).



Immunofluorescent analysis of (4% PFA) fixed mouse eye tissue using Glutamate receptor 2 antibody (11994-1-AP) at dilution of 1:200 and CoraLite® 488-Conjugated AffiniPure Goat Anti-Rabbit IgG(H+L).