

For Research Use Only

EFEMP2 Polyclonal antibody

Catalog Number: 12004-1-AP

2 Publications



Basic Information

Catalog Number:

12004-1-AP

Size:

150ul, Concentration: 200 ug/ml by Nanodrop and 160 ug/ml by Bradford method using BSA as the standard;

Source:

Rabbit

Isotype:

IgG

Immunogen Catalog Number:

AG2640

GenBank Accession Number:

BC010456

GeneID (NCBI):

30008

UNIPROT ID:

O95967

Full Name:

EGF-containing fibulin-like extracellular matrix protein 2

Calculated MW:

443 aa, 49 kDa

Observed MW:

60 kDa

Purification Method:

Antigen affinity purification

Recommended Dilutions:

WB 1:500-1:3000

IP 0.5-4.0 ug for 1.0-3.0 mg of total protein lysate

IHC 1:20-1:200

Applications

Tested Applications:

WB, IHC, IP, ELISA

Cited Applications:

WB

Species Specificity:

human, mouse

Cited Species:

human

Note-IHC: suggested antigen retrieval with TE buffer pH 9.0; (*) Alternatively, antigen retrieval may be performed with citrate buffer pH 6.0

Positive Controls:

WB : HT-29 cells, K-562 cells, mouse kidney tissue, JAR cells, SW480 cells, human heart tissue

IP : mouse kidney tissue,

IHC : human heart tissue, human prostate cancer tissue, human skin tissue

Background Information

EFEMP2, also known as Fibulin-4 is a 60 kDa extracellular matrix (ECM) glycoprotein that is a pivotal oncogene in tumor progression and metastasis. EFEMP2 is necessary for elastic fiber formation and connective tissue development. Defects in this gene are cause of an autosomal recessive cutis laxa syndrome.

Notable Publications

Author	Pubmed ID	Journal	Application
Dong Zhang	36316642	Cancer Biol Ther	WB
Xin Shen	37420173	Cell Mol Biol Lett	WB

Storage

Storage:

Store at -20°C. Stable for one year after shipment.

Storage Buffer:

PBS with 0.02% sodium azide and 50% glycerol pH 7.3.

Aliquoting is unnecessary for -20°C storage

*** 20ul sizes contain 0.1% BSA

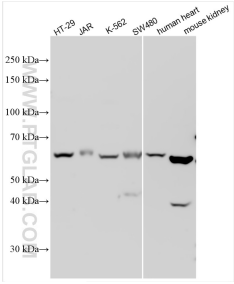
For technical support and original validation data for this product please contact:

T: 1 (888) 4PTGLAB (1-888-478-4522) (toll free in USA), or 1(312) 455-8498 (outside USA)

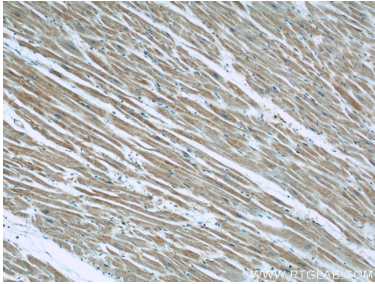
E: proteintech@ptglab.com
W: ptglab.com

This product is exclusively available under Proteintech Group brand and is not available to purchase from any other manufacturer.

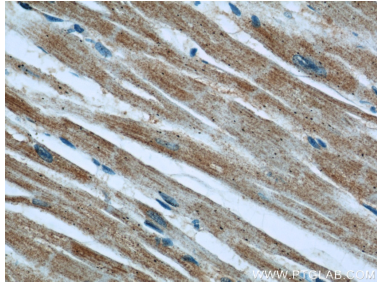
Selected Validation Data



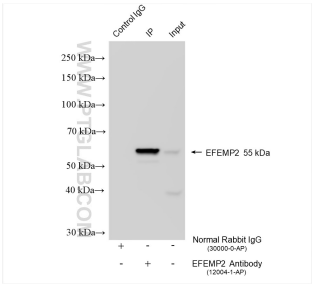
Various lysates were subjected to SDS PAGE followed by western blot with 12004-1-AP (EFEMP2 antibody) at dilution of 1:1500 incubated at room temperature for 1.5 hours.



Immunohistochemical analysis of paraffin-embedded human heart using 12004-1-AP (EFEMP2 antibody) at dilution of 1:50 (under 10x lens).



Immunohistochemical analysis of paraffin-embedded human heart using 12004-1-AP (EFEMP2 antibody) at dilution of 1:50 (under 40x lens).



IP result of anti-EFEMP2 (IP:12004-1-AP, 4ug; Detection:12004-1-AP 1:1000) with mouse kidney tissue lysate 2160 ug.