

For Research Use Only

SERPINA6/CBG Polyclonal antibody

Catalog Number: 12010-1-AP

2 Publications



Basic Information

Catalog Number:

12010-1-AP

Size:

150ul, Concentration: 450 ug/ml by Nanodrop and 253 ug/ml by Bradford method using BSA as the standard;

Source:

Rabbit

Isotype:

IgG

Immunogen Catalog Number:

AG2623

GenBank Accession Number:

BC058021

GeneID (NCBI):

866

UNIPROT ID:

P08185

Full Name:

serpin peptidase inhibitor, clade A (alpha-1 antiproteinase, antitrypsin), member 6

Calculated MW:

405 aa, 45 kDa

Observed MW:

45 kDa

Purification Method:

Antigen affinity purification

Recommended Dilutions:

WB 1:500-1:1000

IHC 1:20-1:200

IF/ICC 1:50-1:500

Applications

Tested Applications:

WB, IHC, IF/ICC, ELISA

Cited Applications:

WB

Species Specificity:

human

Cited Species:

human, mouse

Note-IHC: suggested antigen retrieval with TE buffer pH 9.0; (*) Alternatively, antigen retrieval may be performed with citrate buffer pH 6.0

Positive Controls:

WB : human plasma tissue, A375 cells, HEK-293 cells, L02 cells

IHC : human kidney tissue, human hepatocirrhosis tissue, human liver tissue, human liver cancer tissue

IF/ICC : HepG2 cells,

Background Information

SERPINA6, also known as corticosteroid-binding globulin or CBG, belongs to the serpin family of serine protease inhibitors, and is mainly secreted by the liver. It is an alpha-globulin protein with corticosteroid-binding properties, and involved in obesity and stress sensitivity. It is also the major transport protein for glucocorticoids and progestins in the blood of most vertebrates. Defects in SERPINA6 are a cause of corticosteroid-binding globulin deficiency (CBG deficiency).

Notable Publications

Author	Pubmed ID	Journal	Application
Acosta-Martin Adelina E AE	22163325	PLoS One	WB
Zehua Liu	39162187	Food Funct	WB

Storage

Storage:

Store at -20°C. Stable for one year after shipment.

Storage Buffer:

PBS with 0.02% sodium azide and 50% glycerol pH 7.3.

Aliquoting is unnecessary for -20°C storage

*** 20ul sizes contain 0.1% BSA

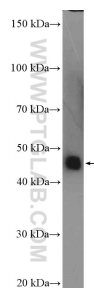
For technical support and original validation data for this product please contact:

T: 1 (888) 4PTGLAB (1-888-478-4522) (toll free in USA), or 1(312) 455-8498 (outside USA)

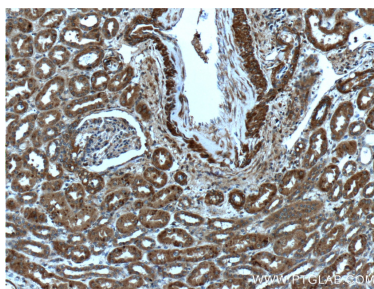
E: proteintech@ptglab.com
W: ptglab.com

This product is exclusively available under Proteintech Group brand and is not available to purchase from any other manufacturer.

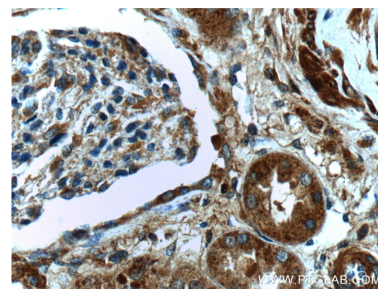
Selected Validation Data



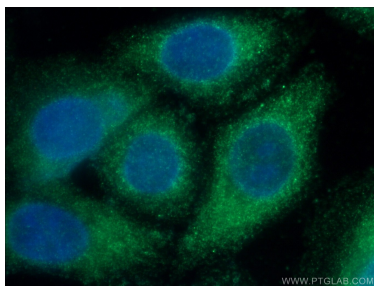
human plasma were subjected to SDS PAGE followed by western blot with 12010-1-AP (SERPINA6 antibody at dilution of 1:600 incubated at room temperature for 1.5 hours.



Immunohistochemical analysis of paraffin-embedded human kidney tissue slide using 12010-1-AP (SERPINA6 antibody at dilution of 1:200 (under 10x lens).



Immunohistochemical analysis of paraffin-embedded human kidney tissue slide using 12010-1-AP (SERPINA6 antibody at dilution of 1:200 (under 40x lens).



Immunofluorescent analysis of (-20°C Ethanol) fixed HepG2 cells using 12010-1-AP (SERPINA6 antibody) at dilution of 1:50 and Alexa Fluor 488-conjugated Goat Anti-Rabbit IgG(H+L).