

For Research Use Only

# TM7SF2 Polyclonal antibody

Catalog Number: 12033-1-AP

1 Publications



## Basic Information

### Catalog Number:

12033-1-AP

### Size:

150ul, Concentration: 1000 ug/ml by Nanodrop and 327 ug/ml by Bradford method using BSA as the standard;

### Source:

Rabbit

### Isotype:

IgG

### Immunogen Catalog Number:

AG2637

### GenBank Accession Number:

BC012857

### GeneID (NCBI):

7108

### UNIPROT ID:

O76062

### Full Name:

transmembrane 7 superfamily member 2

### Calculated MW:

418 aa, 46 kDa

### Observed MW:

55-60 kDa

### Purification Method:

Antigen affinity purification

### Recommended Dilutions:

WB 1:500-1:2000

IHC 1:50-1:500

IF/ICC 1:200-1:800

## Applications

### Tested Applications:

WB, IHC, IF/ICC, ELISA

### Cited Applications:

WB

### Species Specificity:

human

### Cited Species:

mouse

**Note-IHC: suggested antigen retrieval with TE buffer pH 9.0; (\*) Alternatively, antigen retrieval may be performed with citrate buffer pH 6.0**

### Positive Controls:

WB : human lung tissue, BxPC-3 cells, human heart tissue, human kidney tissue

IHC : human prostate cancer tissue,

IF/ICC : PC-3 cells,

## Notable Publications

Author	Pubmed ID	Journal	Application
Monika Lewinska	25393872	PLoS One	WB

## Storage

### Storage:

Store at -20°C. Stable for one year after shipment.

### Storage Buffer:

PBS with 0.02% sodium azide and 50% glycerol pH 7.3.

Aliquoting is unnecessary for -20°C storage

\*\*\* 20ul sizes contain 0.1% BSA

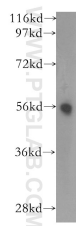
For technical support and original validation data for this product please contact:

T: 1 (888) 4PTGLAB (1-888-478-4522) (toll free in USA), or 1(312) 455-8498 (outside USA)

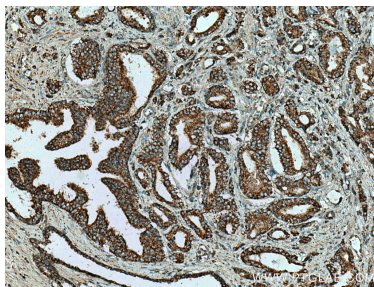
E: [proteintech@ptglab.com](mailto:proteintech@ptglab.com)  
W: [ptglab.com](http://ptglab.com)

This product is exclusively available under Proteintech Group brand and is not available to purchase from any other manufacturer.

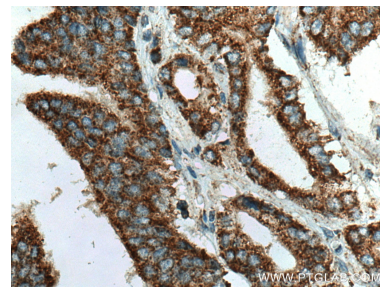
## Selected Validation Data



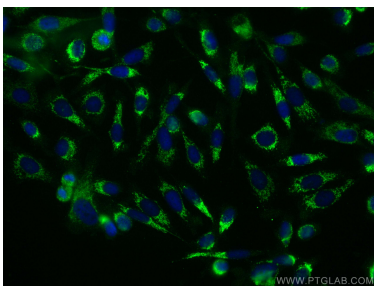
human lung tissue were subjected to SDS PAGE followed by western blot with 12033-1-AP (TM7SF2 antibody) at dilution of 1:400 incubated at room temperature for 1.5 hours.



Immunohistochemical analysis of paraffin-embedded human prostate cancer tissue slide using 12033-1-AP (TM7SF2 antibody) at dilution of 1:200 (under 10x lens). Heat mediated antigen retrieval with Tris-EDTA buffer (pH 9.0).



Immunohistochemical analysis of paraffin-embedded human prostate cancer tissue slide using 12033-1-AP (TM7SF2 antibody) at dilution of 1:200 (under 40x lens). Heat mediated antigen retrieval with Tris-EDTA buffer (pH 9.0).



Immunofluorescent analysis of (-20°C Ethanol) fixed PC-3 cells using TM7SF2 antibody (12033-1-AP) at dilution of 1:400 and CoraLite®488-Conjugated AffiniPure Goat Anti-Rabbit IgG(H+L) (SA00013-2).