

For Research Use Only

KIF12 Polyclonal antibody

Catalog Number: 12035-1-AP

5 Publications



Basic Information

Catalog Number:

12035-1-AP

Size:

150ul, Concentration: 500 ug/ml by Nanodrop;

Source:

Rabbit

Isotype:

IgG

Immunogen Catalog Number:

AG2707

GenBank Accession Number:

BC010626

GeneID (NCBI):

113220

UNIPROT ID:

Q96FN5

Full Name:

kinesin family member 12

Calculated MW:

646 aa, 71 kDa

Observed MW:

55-70 kDa

Purification Method:

Antigen affinity purification

Recommended Dilutions:

WB 1:2000-1:12000

IHC 1:20-1:200

Applications

Tested Applications:

WB, IHC, ELISA

Cited Applications:

WB, IHC, IF

Species Specificity:

human, mouse, rat

Cited Species:

human, mouse

Note-IHC: suggested antigen retrieval with TE buffer pH 9.0; (*) Alternatively, antigen retrieval may be performed with citrate buffer pH 6.0

Positive Controls:

WB : mouse kidney tissue, Y79 cells, mouse pancreas tissue, rat kidney tissue, mouse heart tissue

IHC : human kidney tissue, human pancreas cancer tissue, human renal cell carcinoma tissue

Notable Publications

Author	Pubmed ID	Journal	Application
Stalke Amelie	34555379	J Pediatr	WB,IF
Rik Westland	26352300	Kidney Int	IF
Prunotto Marco M	23376485	J Proteomics	IHC

Storage

Storage:

Store at -20°C. Stable for one year after shipment.

Storage Buffer:

PBS with 0.02% sodium azide and 50% glycerol pH 7.3.

Aliquoting is unnecessary for -20°C storage

*** 20ul sizes contain 0.1% BSA

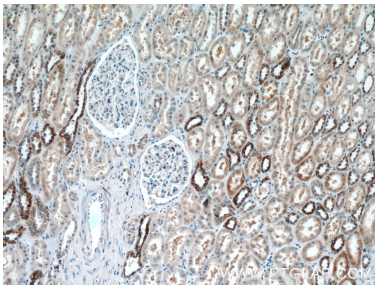
For technical support and original validation data for this product please contact:

T: 1 (888) 4PTGLAB (1-888-478-4522) (toll free in USA), or 1(312) 455-8498 (outside USA)

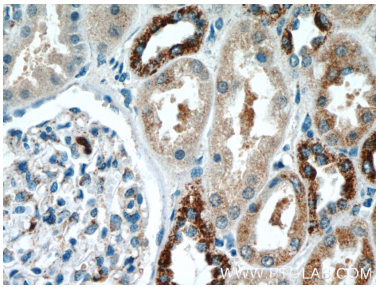
E: proteintech@ptglab.com
W: ptglab.com

This product is exclusively available under Proteintech Group brand and is not available to purchase from any other manufacturer.

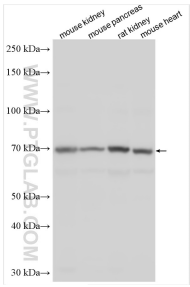
Selected Validation Data



Immunohistochemical analysis of paraffin-embedded human kidney tissue slide using 12035-1-AP (KIF12 Antibody) at dilution of 1:50 (under 10x lens).



Immunohistochemical analysis of paraffin-embedded human kidney tissue slide using 12035-1-AP (KIF12 Antibody) at dilution of 1:50 (under 40x lens).



Various lysates were subjected to SDS PAGE followed by western blot with 12035-1-AP (KIF12 antibody) at dilution of 1:6000 incubated at room temperature for 1.5 hours.