

For Research Use Only

CHI3L1/YKL40 Polyclonal antibody

Catalog Number:12036-1-AP

Featured Product

28 Publications



Basic Information

Catalog Number:

12036-1-AP

Size:

150ul , Concentration: 400 ug/ml by Nanodrop;

Source:

Rabbit

Isotype:

IgG

Immunogen Catalog Number:

AG2710

GenBank Accession Number:

BC008568

GeneID (NCBI):

1116

UNIPROT ID:

P36222

Full Name:

chitinase 3-like 1 (cartilage glycoprotein-39)

Calculated MW:

383 aa, 43 kDa

Observed MW:

40, 33 kDa

Purification Method:

Antigen affinity purification

Recommended Dilutions:

WB 1:500-1:2000

IHC 1:100-1:400

IF-P 1:50-1:500

IF/ICC 1:50-1:500

Applications

Tested Applications:

WB, IHC, IF/ICC, IF-P, ELISA

Cited Applications:

WB, IHC, IF

Species Specificity:

human, mouse

Cited Species:

human, mouse, rat, monkey

Note-IHC: suggested antigen retrieval with TE buffer pH 9.0; (*) Alternatively, antigen retrieval may be performed with citrate buffer pH 6.0

Positive Controls:

WB : THP-1 cells,

IHC : human liver tissue, human ovary tumor tissue

IF-P : mouse brain tissue,

IF/ICC : THP-1 cells,

Background Information

Chitinase 3-like-1 (CHI3L1/YKL-40/CGP-39/GP-39/hCGP-39) is a protein secreted from restricted cell types including colonic epithelial cells (CECs) and macrophages. CHI3L1 is an inflammation-associated molecule, and its expression is enhanced in persons with colitis and colon cancer. CHI3L1 is a 40 kDa protein and is produced by restricted cell types, including colonic epithelial cells (CECs) and macrophages. CHI3L1 can be detected in the Golgi apparatus and the endoplasmic reticulum, but its major sites of action seems to be extracellular as a secreted protein. (PMID:21763261)

Notable Publications

Author	Pubmed ID	Journal	Application
Zhongwei Xin	36115836	Nat Commun	IF
Zhuang Sha	33178594	Front Oncol	IHC
Hao Zhang	36134697	Mol Oncol	WB

Storage

Storage:

Store at -20°C. Stable for one year after shipment.

Storage Buffer:

PBS with 0.02% sodium azide and 50% glycerol pH 7.3.

Aliquoting is unnecessary for -20°C storage

*** 20ul sizes contain 0.1% BSA

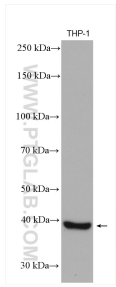
For technical support and original validation data for this product please contact:

T: 1 (888) 4PTGLAB (1-888-478-4522) (toll free in USA), or 1(312) 455-8498 (outside USA)

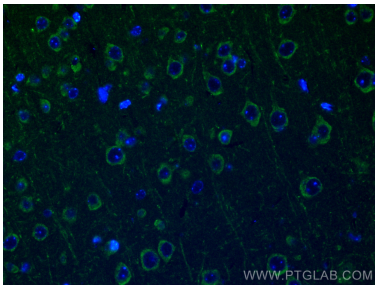
E: proteintech@ptglab.com
W: ptglab.com

This product is exclusively available under Proteintech Group brand and is not available to purchase from any other manufacturer.

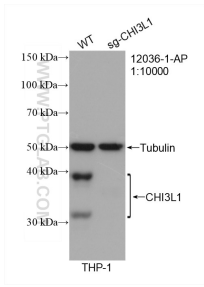
Selected Validation Data



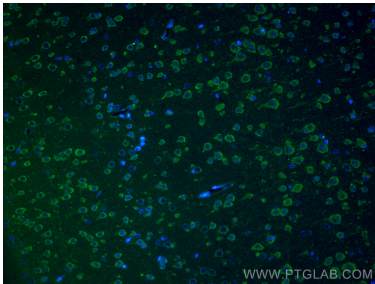
THP-1 cells were subjected to SDS PAGE followed by western blot with 12036-1-AP (CHI3L1/YKL40 antibody) at dilution of 1:1000 incubated at room temperature for 1.5 hours.



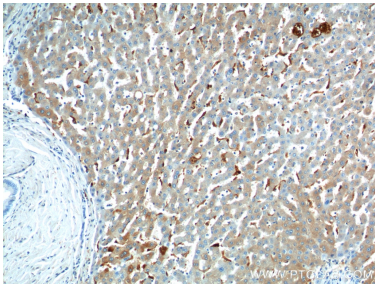
Immunofluorescent analysis of (4% PFA) fixed mouse brain tissue using CHI3L1/YKL40 antibody (12036-1-AP) at dilution of 1:200 and CoraLite®488-Conjugated AffiniPure Goat Anti-Rabbit IgG(H+L).



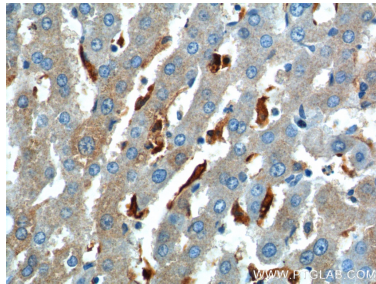
WB result of CHI3L1/YKL40 antibody (12036-1-AP; 1:10000; room temperature for 1.5 hours) with wild-type and CHI3L1/YKL40 knockout THP-1 cells.



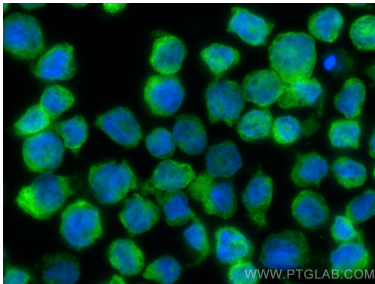
Immunofluorescent analysis of (4% PFA) fixed mouse brain tissue using CHI3L1/YKL40 antibody (12036-1-AP) at dilution of 1:200 and CoraLite®488-Conjugated AffiniPure Goat Anti-Rabbit IgG(H+L).



Immunohistochemical analysis of paraffin-embedded human liver tissue slide using 12036-1-AP (CHI3L1 Antibody) at dilution of 1:200 (under 10x lens).



Immunohistochemical analysis of paraffin-embedded human liver tissue slide using 12036-1-AP (CHI3L1 Antibody) at dilution of 1:200 (under 40x lens).



Immunofluorescent analysis of (4% PFA) fixed THP-1 cells using CHI3L1/YKL40 antibody (12036-1-AP) at dilution of 1:200 and CoraLite®488-Conjugated Goat Anti-Rabbit IgG(H+L) (SA00013-2).