

For Research Use Only

SLC38A1 Polyclonal antibody

Catalog Number: 12039-1-AP

Featured Product

13 Publications



Basic Information

Catalog Number:

12039-1-AP

Size:

150ul, Concentration: 900 µg/ml by Nanodrop and 333 µg/ml by Bradford method using BSA as the standard;

Source:

Rabbit

Isotype:

IgG

Immunogen Catalog Number:

AG2668

GenBank Accession Number:

BC010620

GeneID (NCBI):

81539

UNIPROT ID:

Q9H2H9

Full Name:

solute carrier family 38, member 1

Calculated MW:

487 aa, 54 kDa

Observed MW:

60-65 kDa

Purification Method:

Antigen affinity purification

Recommended Dilutions:

WB 1:500-1:1000

IP 0.5-4.0 µg for 1.0-3.0 mg of total protein lysate

IHC 1:20-1:200

Applications

Tested Applications:

WB, IP, IHC, ELISA

Cited Applications:

WB, IHC, IF

Species Specificity:

human, mouse, rat

Cited Species:

human, mouse

Note-IHC: suggested antigen retrieval with TE buffer pH 9.0; (*) Alternatively, antigen retrieval may be performed with citrate buffer pH 6.0

Positive Controls:

WB: Jurkat cells, human brain tissue, human kidney tissue

IP: mouse brain tissue,

IHC: human prostate cancer tissue,

Background Information

SLC38A1 (Sodium-coupled neutral amino acid transporter 1), is also named as SNAT1, which is a symporter that cotransports short-chain neutral amino acids and sodium ions from the extracellular to the intracellular side of the cell membrane (PMID:20599747, PMID:10891391). Inhibition of SLC38A1 reduced tumor growth, cellular migration, invasion, and induced senescence in melanoma cells (PMID:35565278). SLC38A1 was identified as a positive regulator of mTORC1 in neurons, which promoted ischemic brain damage by mTOR-autophagy system (PMID:31552299). SLC38A1 is mainly expressed in brain and placenta.

Notable Publications

Author	Pubmed ID	Journal	Application
Ogura Masato M	23110224	PLoS One	
Yun Liu	34697542	J Oncol	IHC
Yalong Wang	31753849	J Exp Med	IF

Storage

Storage:

Store at -20°C. Stable for one year after shipment.

Storage Buffer:

PBS with 0.02% sodium azide and 50% glycerol pH 7.3.

Aliquoting is unnecessary for -20°C storage

*** 20ul sizes contain 0.1% BSA

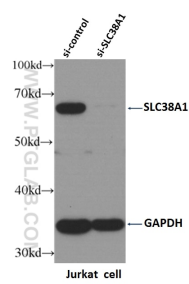
For technical support and original validation data for this product please contact:

T: 1 (888) 4PTGLAB (1-888-478-4522) (toll free in USA), or 1(312) 455-8498 (outside USA)

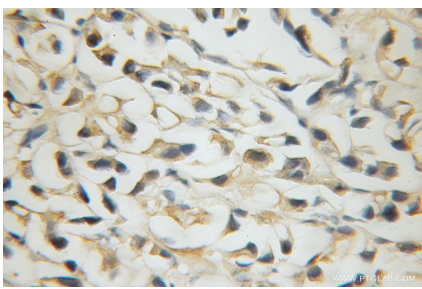
E: proteintech@ptglab.com
W: ptglab.com

This product is exclusively available under Proteintech Group brand and is not available to purchase from any other manufacturer.

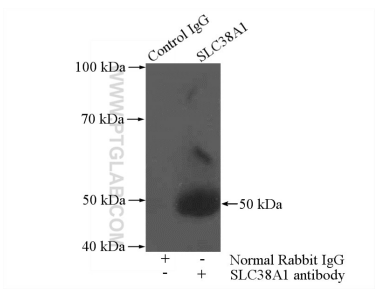
Selected Validation Data



WB result of SLC38A1 antibody (12039-1-AP, 1:500) with si-Control and si-SLC38A1 transfected Jurkat cells.



Immunohistochemical analysis of paraffin-embedded human prostate cancer using 12039-1-AP (SLC38A1 antibody) at dilution of 1:50 (under 40x lens).



IP result of anti-SLC38A1 (IP:12039-1-AP, 4ug; Detection:12039-1-AP 1:500) with mouse brain tissue lysate 4000ug.