

For Research Use Only

MLX Polyclonal antibody

Catalog Number: 12042-1-AP

Featured Product

4 Publications



Basic Information

Catalog Number: 12042-1-AP	GenBank Accession Number: BC010689	Purification Method: Antigen affinity purification
Size: 150ul, Concentration: 900 µg/ml by Nanodrop and 447 µg/ml by Bradford method using BSA as the standard;	GeneID (NCBI): 6945	Recommended Dilutions: WB 1:500-1:1000 IHC 1:20-1:200
Source: Rabbit	Full Name: MAX-like protein X	
Isotype: IgG	Calculated MW: 298 aa, 33 kDa	
Immunogen Catalog Number: AG2671	Observed MW: 33 kDa	

Applications

Tested Applications: IHC, WB, ELISA	Positive Controls:
Cited Applications: IF, IHC, WB	WB: mouse thymus tissue, mouse ovary tissue
Species Specificity: human, mouse, rat	IHC: human prostate cancer tissue,
Cited Species: human, mouse	

Note-IHC: suggested antigen retrieval with TE buffer pH 9.0; (*) Alternatively, antigen retrieval may be performed with citrate buffer pH 6.0

Background Information

Notable Publications

Author	Pubmed ID	Journal	Application
Patrick A Carroll	34669700	PLoS Biol	IF
Hua Liao	21873567	Mol Cell Proteomics	WB
Julie Martone	32337838	EMBO Rep	WB,IF

Storage

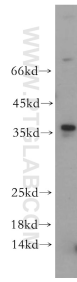
Storage:
Store at -20°C. Stable for one year after shipment.
Storage Buffer:
PBS with 0.02% sodium azide and 50% glycerol pH 7.3.
Aliquoting is unnecessary for -20°C storage

*** 20ul sizes contain 0.1% BSA

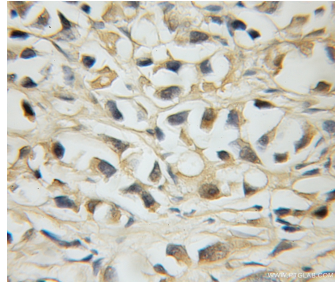
For technical support and original validation data for this product please contact:
T: 1 (888) 4PTGLAB (1-888-478-4522) (toll free in USA), or 1(312) 455-8498 (outside USA)
E: proteintech@ptglab.com
W: ptglab.com

This product is exclusively available under Proteintech Group brand and is not available to purchase from any other manufacturer.

Selected Validation Data



mouse thymus tissue were subjected to SDS PAGE followed by western blot with 12042-1-AP (MLX antibody) at dilution of 1:200 incubated at room temperature for 1.5 hours.



Immunohistochemical analysis of paraffin-embedded human prostate cancer using 12042-1-AP (MLX antibody) at dilution of 1:50 (under 10x lens).