

For Research Use Only

SRPR Polyclonal antibody

Catalog Number: 12090-1-AP **1 Publications**



Basic Information

Catalog Number: 12090-1-AP	GenBank Accession Number: BC013583	Purification Method: Antigen affinity purification
Size: 150ul , Concentration: 500 µg/ml by Nanodrop and 300 µg/ml by Bradford method using BSA as the standard;	GeneID (NCBI): 6734	Recommended Dilutions: WB 1:500-1:2000 IHC 1:20-1:200
Source: Rabbit	Full Name: signal recognition particle receptor (docking protein)	
Isotype: IgG	Calculated MW: 638 aa, 70 kDa	
Immunogen Catalog Number: AG2730	Observed MW: 65-70 kDa	

Applications

Tested Applications: IHC, WB, ELISA	Positive Controls: WB : mouse liver tissue, MCF-7 cells IHC : human breast cancer tissue,
Cited Applications: WB	
Species Specificity: human, mouse, rat	
Cited Species: human	

Note-IHC: suggested antigen retrieval with TE buffer pH 9.0; (*) Alternatively, antigen retrieval may be performed with citrate buffer pH 6.0

Background Information

Notable Publications

Author	Pubmed ID	Journal	Application
Song-Yang Zhang	29735414	EBioMedicine	WB

Storage

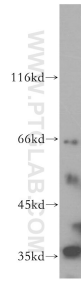
Storage:
Store at -20°C. Stable for one year after shipment.
Storage Buffer:
PBS with 0.02% sodium azide and 50% glycerol pH 7.3.
Aliquoting is unnecessary for -20°C storage

*** 20ul sizes contain 0.1% BSA

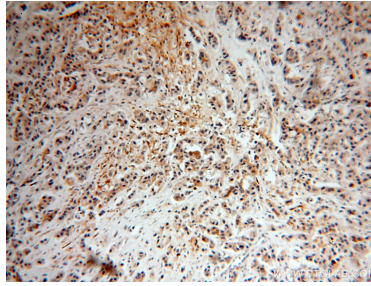
For technical support and original validation data for this product please contact:
T: 1 (888) 4PTGLAB (1-888-478-4522) (toll free in USA), or 1(312) 455-8498 (outside USA) E: proteintech@ptglab.com W: ptglab.com

This product is exclusively available under Proteintech Group brand and is not available to purchase from any other manufacturer.

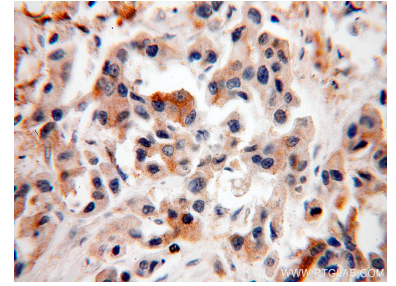
Selected Validation Data



mouse liver tissue were subjected to SDS PAGE followed by western blot with 12090-1-AP (SRPR antibody) at dilution of 1:500 incubated at room temperature for 1.5 hours.



Immunohistochemical analysis of paraffin-embedded human breast cancer using 12090-1-AP (SRPR antibody) at dilution of 1:50 (under 10x lens).



Immunohistochemical analysis of paraffin-embedded human breast cancer using 12090-1-AP (SRPR antibody) at dilution of 1:50 (under 40x lens).