

For Research Use Only

TRIM21 Polyclonal antibody

Catalog Number: 12108-1-AP

Featured Product

73 Publications



Basic Information

Catalog Number:

12108-1-AP

Size:

150ul, Concentration: 450 ug/ml by Nanodrop;

Source:

Rabbit

Isotype:

IgG

Immunogen Catalog Number:

AG2753

GenBank Accession Number:

BC010861

GeneID (NCBI):

6737

UNIPROT ID:

P19474

Full Name:

tripartite motif-containing 21

Calculated MW:

475 aa, 54 kDa

Observed MW:

42-45 kDa, 49-54 kDa

Purification Method:

Antigen affinity purification

Recommended Dilutions:

WB 1:5000-1:50000

IP 0.5-4.0 ug for 1.0-3.0 mg of total protein lysate

IHC 1:50-1:500

IF/ICC 1:200-1:800

Applications

Tested Applications:

WB, IHC, IF/ICC, IP, ELISA

Cited Applications:

WB, IHC, IF, IP, colP

Species Specificity:

human

Cited Species:

human, mouse, rat, pig, zebrafish, hamster

Note-IHC: suggested antigen retrieval with TE buffer pH 9.0; (*) Alternatively, antigen retrieval may be performed with citrate buffer pH 6.0

Positive Controls:

WB: HEK-293 cells, A549 cells, HeLa cells, HL-60 cells, HT-1080 cells, HT-29 cells, MCF-7 cells

IP: A549 cells,

IHC: human pancreas cancer tissue, human colon cancer tissue

IF/ICC: HepG2 cells, A549 cells

Background Information

TRIM21 has multiple N-terminal zinc finger motifs (has E3 ligase activity), a central leucine zipper, and a potential N-glycosylation site. TRIM3 is a E3 ubiquitin-protein ligase. It can form a ubiquitin ligase complex with E2 UBE2D2, which function not only for the ubiquitination of USP4 and IKBKB but also for its self-ubiquitination. It has a role in the regulation of the cell cycle progression and could enhance the decapping activity of DCP2. It can exist in all mammalian cells as a ribonucleoprotein particle, which composed of a single polypeptide and 1 of 4 small RNA molecules. TRIM21 exists various isoforms and range molecular weight of isoforms is about 42-45kDa and 49-54 kDa.

Notable Publications

Author	Pubmed ID	Journal	Application
Xin-Feng Liu	33125618	Neurochem Res	WB
Pushuai Wen	36307841	Cell Commun Signal	WB,IHC,IF
Yin Zhao	34689010	Oral Oncol	WB,IF,IP

Storage

Storage:

Store at -20°C. Stable for one year after shipment.

Storage Buffer:

PBS with 0.02% sodium azide and 50% glycerol, pH7.3

Aliquoting is unnecessary for -20°C storage

*** 20ul sizes contain 0.1% BSA

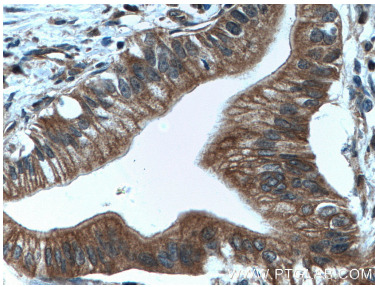
For technical support and original validation data for this product please contact:

T: 1 (888) 4PTGLAB (1-888-478-4522) (toll free in USA), or 1(312) 455-8498 (outside USA)

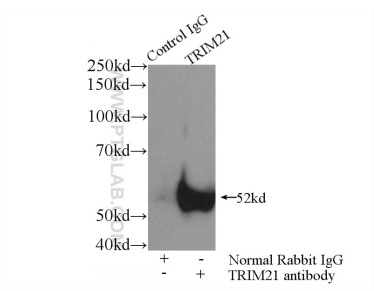
E: proteintech@ptglab.com
W: ptglab.com

This product is exclusively available under Proteintech Group brand and is not available to purchase from any other manufacturer.

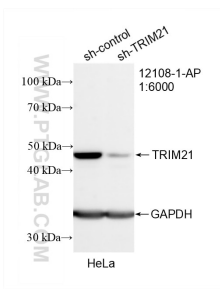
Selected Validation Data



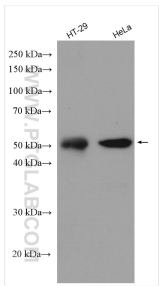
Immunohistochemical analysis of paraffin-embedded human pancreas cancer tissue slide using 12108-1-AP (TRIM21 antibody) at dilution of 1:200 (under 40x lens. Heat mediated antigen retrieval with Tris-EDTA buffer (pH 9.0).



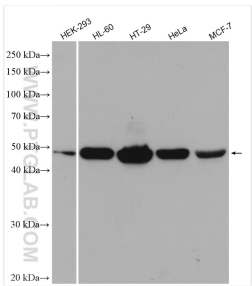
IP result of anti-TRIM21 (IP:12108-1-AP, 4ug; Detection:12108-1-AP 1:500) with A549 cells lysate 920ug.



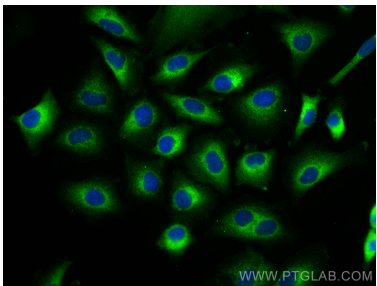
WB result of TRIM21 antibody (12108-1-AP; 1:6000; incubated at room temperature for 1.5 hours) with sh-Control and sh-TRIM21 transfected HeLa cells.



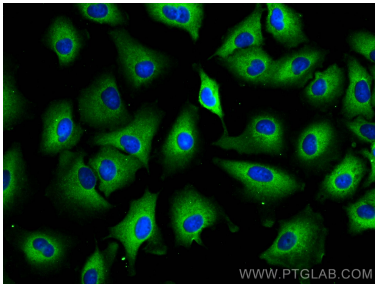
Various lysates were subjected to SDS PAGE followed by western blot with 12108-1-AP (TRIM21 antibody) at dilution of 1:4000 incubated at room temperature for 1.5 hours.



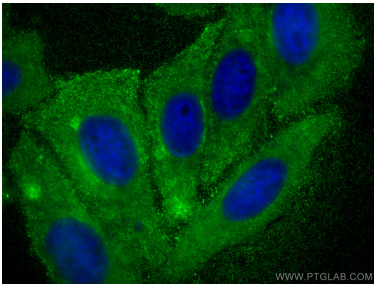
Various lysates were subjected to SDS PAGE followed by western blot with 12108-1-AP (TRIM21 antibody) at dilution of 1:10000 incubated at room temperature for 1.5 hours.



Immunofluorescent analysis of (-20°C Methanol) fixed A549 cells using TRIM21 antibody (12108-1-AP) at dilution of 1:400 and CoraLite®488-Conjugated Goat Anti-Rabbit IgG(H+L).



Immunofluorescent analysis of (-20°C Methanol) fixed A549 cells using TRIM21 antibody (12108-1-AP) at dilution of 1:400 and CoraLite®488-Conjugated Goat Anti-Rabbit IgG(H+L).



Immunofluorescent analysis of (-20°C Ethanol) fixed HepG2 cells using TRIM21 antibody (12108-1-AP) at dilution of 1:400 and CoraLite®488-Conjugated Goat Anti-Rabbit IgG(H+L).