

For Research Use Only

AP1M1 Polyclonal antibody

Catalog Number: 12112-1-AP

Featured Product

9 Publications



Basic Information

Catalog Number:

12112-1-AP

Size:

150ul, Concentration: 200 ug/ml by Nanodrop and 133 ug/ml by Bradford method using BSA as the standard;

Source:

Rabbit

Isotype:

IgG

Immunogen Catalog Number:

AG2757

GenBank Accession Number:

BC017469

GeneID (NCBI):

8907

UNIPROT ID:

Q9BXS5

Full Name:

adaptor-related protein complex 1, mu 1 subunit

Calculated MW:

423 aa, 49 kDa

Observed MW:

49 kDa

Purification Method:

Antigen affinity purification

Recommended Dilutions:

WB 1:500-1:1000

IP 0.5-4.0 ug for 1.0-3.0 mg of total protein lysate

Applications

Tested Applications:

WB, IP, ELISA

Cited Applications:

WB, IF, CoIP

Species Specificity:

human, mouse, rat

Cited Species:

human, mouse, canine

Positive Controls:

WB : human brain tissue, Hacat cells

IP : SH-SY5Y cells,

Background Information

AP1M1, also named as CLTNM, Mu-adaptin 1 and Clathrin coat assembly protein AP47, belongs to the adaptor complexes medium subunit family. It is a subunit of clathrin-associated adaptor protein complex 1 that plays a role in protein sorting in the trans-Golgi network (TGN) and endosomes. The AP complexes mediate the recruitment of clathrin to membranes and the recognition of sorting signals within the cytosolic tails of transmembrane cargo molecules.

Notable Publications

Author	Pubmed ID	Journal	Application
Ying Liu	36261523	Nature	WB
Rajesh Abraham Jacob	28577469	Virology	WB
Saitoh Masao M	23675417	PLoS One	WB

Storage

Storage:

Store at -20°C. Stable for one year after shipment.

Storage Buffer:

PBS with 0.02% sodium azide and 50% glycerol pH 7.3.

Aliquoting is unnecessary for -20°C storage

*** 20ul sizes contain 0.1% BSA

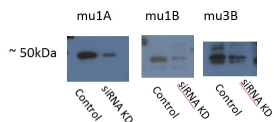
For technical support and original validation data for this product please contact:

T: 1 (888) 4PTGLAB (1-888-478-4522) (toll free in USA), or 1(312) 455-8498 (outside USA)

E: proteintech@ptglab.com
W: ptglab.com

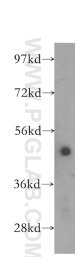
This product is exclusively available under Proteintech Group brand and is not available to purchase from any other manufacturer.

Selected Validation Data

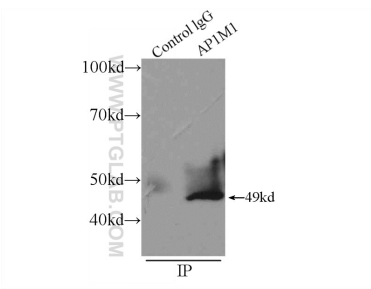


AP1M1 is mu1A: 12112-1-AP,
AP1M2 is mu1B: 10618-1-AP,
Ap3M2 is mu3B: 11925-1-AP,
acceptable bands ~50 kDa showing
some degree of siRNA
knockdown

WB result of AP1M1 antibody (12112-1-AP, 1:500)
with siRNA cell lysate.



human brain tissue were subjected to SDS PAGE
followed by western blot with 12112-1-AP (AP1M1
antibody) at dilution of 1:400 incubated at room
temperature for 1.5 hours.



IP result of anti-AP1M1 (IP:12112-1-AP, 4ug;
Detection:12112-1-AP 1:500) with SH-SY5Y cells
lysate 2500ug.