

For Research Use Only

AP3M1 Polyclonal antibody

Catalog Number: 12114-1-AP

Featured Product

2 Publications



Basic Information

Catalog Number:

12114-1-AP

Size:

150ul, Concentration: 500 ug/ml by Nanodrop;

Source:

Rabbit

Isotype:

IgG

Immunogen Catalog Number:

AG2759

GenBank Accession Number:

BC026232

GeneID (NCBI):

26985

UNIPROT ID:

Q9Y2T2

Full Name:

adaptor-related protein complex 3, mu 1 subunit

Calculated MW:

418 aa, 47 kDa

Observed MW:

47 kDa

Purification Method:

Antigen affinity purification

Recommended Dilutions:

WB 1:1000-1:8000

IHC 1:50-1:500

IF/ICC 1:50-1:500

Applications

Tested Applications:

WB, IHC, IF/ICC, ELISA

Cited Applications:

WB

Species Specificity:

human, mouse

Cited Species:

human, rat

Note-IHC: suggested antigen retrieval with TE buffer pH 9.0; (*) Alternatively, antigen retrieval may be performed with citrate buffer pH 6.0

Positive Controls:

WB : HEK-293 cells, NIH/3T3 cells

IHC : mouse cerebellum tissue,

IF/ICC : HeLa cells,

Background Information

Adaptor protein (AP) complexes are cytosolic heterotetramers that mediate the sorting of membrane proteins in the secretory and endocytic pathways. AP3M1 is a subunit of the AP-3 complex which is composed of two large adaptins (AP3D1 and AP3B1 or AP3B2), a medium adaptin (AP3M1 or AP3M2) and a small adaptin (AP51 or AP52). AP-3 complex is associated with the Golgi region as well as more peripheral structures. It facilitates the budding of vesicles from the Golgi membrane and may be directly involved in trafficking to lysosomes.

Notable Publications

Author	Pubmed ID	Journal	Application
Qi Song	36183948	J Ethnopharmacol	WB
Guo Yusong Y	23326640	Elife	WB

Storage

Storage:

Store at -20°C. Stable for one year after shipment.

Storage Buffer:

PBS with 0.02% sodium azide and 50% glycerol pH 7.3.

Aliquoting is unnecessary for -20°C storage

*** 20ul sizes contain 0.1% BSA

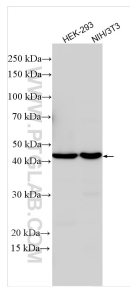
For technical support and original validation data for this product please contact:

T: 1 (888) 4PTGLAB (1-888-478-4522) (toll free in USA), or 1(312) 455-8498 (outside USA)

E: proteintech@ptglab.com
W: ptglab.com

This product is exclusively available under Proteintech Group brand and is not available to purchase from any other manufacturer.

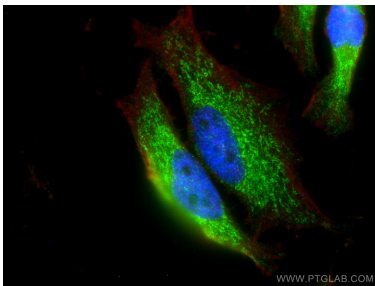
Selected Validation Data



Various lysates were subjected to SDS PAGE followed by western blot with 12114-1-AP (AP3M1 antibody) at dilution of 1:4000 incubated at room temperature for 1.5 hours.

Immunohistochemical analysis of paraffin-embedded mouse cerebellum tissue slide using 12114-1-AP (AP3M1 antibody) at dilution of 1:200 (under 10x lens). Heat mediated antigen retrieval with Tris-EDTA buffer (pH 9.0).

Immunohistochemical analysis of paraffin-embedded mouse cerebellum tissue slide using 12114-1-AP (AP3M1 antibody) at dilution of 1:200 (under 40x lens). Heat mediated antigen retrieval with Tris-EDTA buffer (pH 9.0).



Immunofluorescent analysis of (4% PFA) fixed HeLa cells using AP3M1 antibody (12114-1-AP) at dilution of 1:200 and Coralite® 488-Conjugated Goat Anti-Rabbit IgG(H+L), CL594-phalloidin (red).