

For Research Use Only

MCCC2 Polyclonal antibody

Catalog Number: 12117-1-AP

Featured Product

4 Publications



Basic Information

Catalog Number:

12117-1-AP

Size:

150ul, Concentration: 650 ug/ml by Nanodrop and 220 ug/ml by Bradford method using BSA as the standard;

Source:

Rabbit

Isotype:

IgG

Immunogen Catalog Number:

AG2767

GenBank Accession Number:

BC014897

GeneID (NCBI):

64087

UNIPROT ID:

Q9HCC0

Full Name:

methylcrotonoyl-Coenzyme A carboxylase 2 (beta)

Calculated MW:

563 aa, 61 kDa

Observed MW:

61 kDa

Purification Method:

Antigen affinity purification

Recommended Dilutions:

WB 1:500-1:1000

IP 0.5-4.0 ug for 1.0-3.0 mg of total protein lysate

IHC 1:20-1:200

Applications

Tested Applications:

WB, IP, IHC, ELISA

Cited Applications:

WB, IF, IHC, CoIP

Species Specificity:

human, mouse, rat

Cited Species:

human, mouse

Positive Controls:

WB: human liver tissue,

IP: mouse kidney tissue,

IHC: human pancreas cancer tissue,

Note-IHC: suggested antigen retrieval with TE buffer pH 9.0; (*) Alternatively, antigen retrieval may be performed with citrate buffer pH 6.0

Background Information

MCCC2 (Methylcrotonoyl-CoA carboxylase beta chain, mitochondrial) is also named as MCCB and belongs to the AccD/PCCB family. The putative 563-amino acid polypeptide has a calculated molecular mass of 61 kD and contains an N-terminal mitochondrial targeting sequence (PMID:11181649). It catalyzes carboxylation of 3 methylcrotonyl CoA to form 3 methylglutaconyl-CoA and is probably a dodecamer composed of six biotin-containing alpha subunits and six beta subunits. Defects in MCCC2 are the cause of methylcrotonoyl-CoA carboxylase 2 deficiency (MCC2D).

Notable Publications

Author	Pubmed ID	Journal	Application
J Dai	26311342	Andrology	WB
Yu-Yan Chen	33407468	Cancer Cell Int	WB
Pang Jun J	19894759	J Proteome Res	WB, IHC

Storage

Storage:

Store at -20°C. Stable for one year after shipment.

Storage Buffer:

PBS with 0.02% sodium azide and 50% glycerol pH 7.3.

Aliquoting is unnecessary for -20°C storage

*** 20ul sizes contain 0.1% BSA

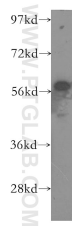
For technical support and original validation data for this product please contact:

T: 1 (888) 4PTGLAB (1-888-478-4522) (toll free in USA), or 1(312) 455-8498 (outside USA)

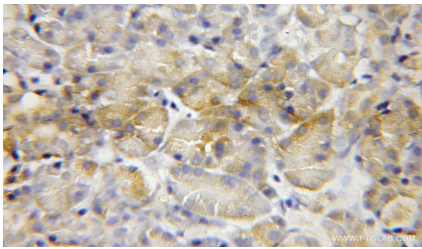
E: proteintech@ptglab.com
W: ptglab.com

This product is exclusively available under Proteintech Group brand and is not available to purchase from any other manufacturer.

Selected Validation Data



human liver tissue were subjected to SDS PAGE followed by western blot with 12117-1-AP (MCCC2 antibody) at dilution of 1:400 incubated at room temperature for 1.5 hours.



Immunohistochemical analysis of paraffin-embedded human pancreas cancer using 12117-1-AP (MCCC2 antibody) at dilution of 1:50 (under 10x lens).



IP result of anti-MCCC2 (IP:12117-1-AP, 4ug; Detection:12117-1-AP 1:300) with mouse kidney tissue lysate 4000ug.