

For Research Use Only

CCBL1/KAT1 Polyclonal antibody

Catalog Number: 12156-1-AP **10 Publications**



Basic Information

Catalog Number: 12156-1-AP	GenBank Accession Number: BC013069	Purification Method: Antigen affinity purification
Size: 150ul , Concentration: 400 µg/ml by Nanodrop and 233 µg/ml by Bradford method using BSA as the standard;	GeneID (NCBI): 883	Recommended Dilutions: WB 1:500-1:1000 IF 1:50-1:500
Source: Rabbit	Full Name: cysteine conjugate-beta lyase, cytoplasmic	
Isotype: IgG	Calculated MW: 48 kDa	
Immunogen Catalog Number: AG2828	Observed MW: 48-50 kDa	

Applications

Tested Applications: IF, WB, ELISA	Positive Controls: WB : mouse kidney tissue, HeLa cells, L02 cells IF : HeLa cells,
Cited Applications: IHC, WB	
Species Specificity: human, mouse, rat	
Cited Species: human, rat, mouse	

Background Information

CCBL1 encodes kynurenine aminotransferase 1 (KAT1), a key enzyme involved in kynurenine pathway. CCBL1 catalyzes the production of kynurenic acid, a powerful endogenous excitatory amino acid receptor antagonist that is widely regarded as the potent neuroprotective agent.

Notable Publications

Author	Pubmed ID	Journal	Application
Leandro Z Agudelo	25259918	Cell	WB
Chongye Fang	33790369	Sci Rep	WB
Maja Schlittler	27030575	Am J Physiol Cell Physiol	

Storage

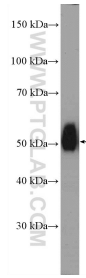
Storage:
Store at -20°C. Stable for one year after shipment.
Storage Buffer:
PBS with 0.02% sodium azide and 50% glycerol pH 7.3.
Aliquoting is unnecessary for -20°C storage

*** 20ul sizes contain 0.1% BSA

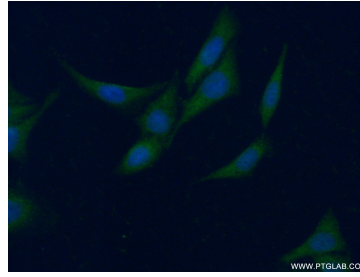
For technical support and original validation data for this product please contact:
T: 1 (888) 4PTGLAB (1-888-478-4522) (toll free in USA), or 1(312) 455-8498 (outside USA)
E: proteintech@ptglab.com
W: ptglab.com

This product is exclusively available under Proteintech Group brand and is not available to purchase from any other manufacturer.

Selected Validation Data



mouse kidney tissue were subjected to SDS PAGE followed by western blot with 12156-1-AP (CCBL1/KAT1 antibody at dilution of 1:600 incubated at room temperature for 1.5 hours.



fixed HeLa cells using 12156-1-AP (CCBL1/KAT1 antibody) at dilution of 1:50 and Alexa Fluor 488-conjugated AffiniPure Goat Anti-Rabbit IgG(H+L).