

For Research Use Only

CHFR Polyclonal antibody

Catalog Number:12169-1-AP

Featured Product

7 Publications



Basic Information

Catalog Number: 12169-1-AP	GenBank Accession Number: BC012072	Purification Method: Antigen affinity purification
Size: 150ul , Concentration: 500 ug/ml by Nanodrop and 267 ug/ml by Bradford method using BSA as the standard;	GeneID (NCBI): 55743	Recommended Dilutions: WB 1:500-1:2000 IHC 1:20-1:200
Source: Rabbit	UNIPROT ID: Q96EP1	
Isotype: IgG	Full Name: checkpoint with forkhead and ring finger domains	
Immunogen Catalog Number: AG2811	Calculated MW: 664 aa, 73 kDa	
	Observed MW: 70-85 kDa	

Applications

Tested Applications: WB, IHC, ELISA	Positive Controls: WB : HepG2 cells, multi-cells/tissue
Cited Applications: WB, IHC	IHC : human endometrial cancer tissue, human lung cancer tissue
Species Specificity: human, mouse	
Cited Species: human, mouse	

Note-IHC: suggested antigen retrieval with TE buffer pH 9.0; (*) Alternatively, antigen retrieval may be performed with citrate buffer pH 6.0

Background Information

The Checkpoint with forkhead and RING finger domains protein(CHFR) is a checkpoint protein that reportedly initiates a cell cycle delay in response to microtubule stress during prophase in mitosis and it has been hypothesized to be a tumor suppressor with a potential role as a biomarker for chemotherapeutic response to Taxol(PMID:17596595). It belongs to the CHFR family. Endogenous Chfr is ubiquitinated and phosphorylated in an MPF-dependent manner in mitotic Xenopus egg extracts(PMID:18504434). It has 5 isoforms produced by alternative splicing.

Notable Publications

Author	Pubmed ID	Journal	Application
Xiangling Chen	34539751	Front Genet	WB
Yuan Li	31812083	Transl Oncol	WB
Guobin Jiang	33880594	Mol Med Rep	WB

Storage

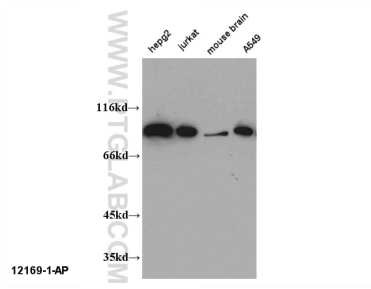
Storage:
Store at -20°C. Stable for one year after shipment.
Storage Buffer:
PBS with 0.02% sodium azide and 50% glycerol pH 7.3.
Aliquoting is unnecessary for -20°C storage

*** 20ul sizes contain 0.1% BSA

For technical support and original validation data for this product please contact:
T: 1 (888) 4PTGLAB (1-888-478-4522) (toll free in USA), or 1(312) 455-8498 (outside USA)
E: proteintech@ptglab.com
W: ptglab.com

This product is exclusively available under Proteintech Group brand and is not available to purchase from any other manufacturer.

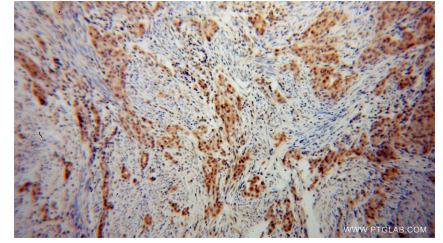
Selected Validation Data



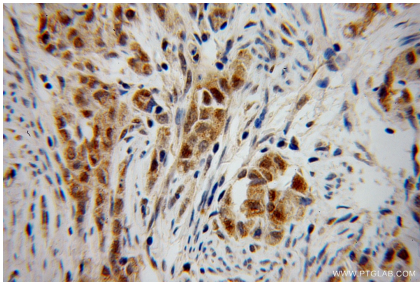
WB result of 12169-1-AP (CHFR antibody).



HepG2 cells were subjected to SDS PAGE followed by western blot with 12169-1-AP (CHFR antibody) at dilution of 1:1000 incubated at room temperature for 1.5 hours.



Immunohistochemical analysis of paraffin-embedded human endometrial cancer using 12169-1-AP (CHFR antibody) at dilution of 1:100 (under 10x lens).



Immunohistochemical analysis of paraffin-embedded human endometrial cancer using 12169-1-AP (CHFR antibody) at dilution of 1:100 (under 40x lens).