

For Research Use Only

RTF1 Polyclonal antibody

Catalog Number: 12170-1-AP

3 Publications



Basic Information

Catalog Number:

12170-1-AP

Size:

150ul, Concentration: 900 ug/ml by Nanodrop and 400 ug/ml by Bradford method using BSA as the standard;

Source:

Rabbit

Isotype:

IgG

Immunogen Catalog Number:

AG2812

GenBank Accession Number:

BC015052

GeneID (NCBI):

23168

UNIPROT ID:

Q92541

Full Name:

Rtf1, Paf1/RNA polymerase II complex component, homolog (S. cerevisiae)

Calculated MW:

585aa, 67 kDa; 710aa, 80 kDa

Observed MW:

100 kDa

Purification Method:

Antigen affinity purification

Recommended Dilutions:

WB 1:500-1:3000

IP 0.5-4.0 ug for 1.0-3.0 mg of total protein lysate

IHC 1:50-1:500

Applications

Tested Applications:

WB, IP, IHC, ELISA

Cited Applications:

WB, IP

Species Specificity:

human, mouse, rat

Cited Species:

human, mouse

Note-IHC: suggested antigen retrieval with TE buffer pH 9.0; (*) Alternatively, antigen retrieval may be performed with citrate buffer pH 6.0

Positive Controls:

WB : MCF-7 cells, HL-60 cells, rat brain tissue, mouse brain tissue

IP : HeLa cells,

IHC : human prostate cancer tissue,

Notable Publications

Author	Pubmed ID	Journal	Application
Paul Adrian Ginno	30279501	Nat Commun	WB
Gang Xiang	35551175	Cell Death Dis	WB
Jiawei Zhao	38218188	Cell	WB, IP

Storage

Storage:

Store at -20°C. Stable for one year after shipment.

Storage Buffer:

PBS with 0.02% sodium azide and 50% glycerol pH 7.3.

Aliquoting is unnecessary for -20°C storage

*** 20ul sizes contain 0.1% BSA

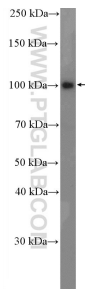
For technical support and original validation data for this product please contact:

T: 1 (888) 4PTGLAB (1-888-478-4522) (toll free in USA), or 1(312) 455-8498 (outside USA)

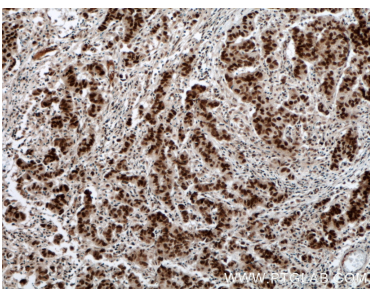
E: proteintech@ptglab.com
W: ptglab.com

This product is exclusively available under Proteintech Group brand and is not available to purchase from any other manufacturer.

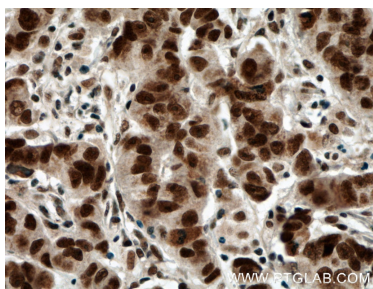
Selected Validation Data



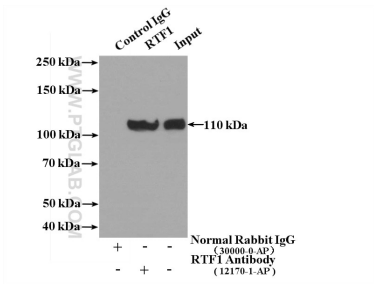
MCF-7 cells were subjected to SDS PAGE followed by western blot with 12170-1-AP (RTF1 antibody) at dilution of 1:1500 incubated at room temperature for 1.5 hours.



Immunohistochemical analysis of paraffin-embedded human prostate cancer tissue slide using 12170-1-AP (RTF1 antibody) at dilution of 1:200 (under 10x lens. Heat mediated antigen retrieval with Tris-EDTA buffer (pH 9.0).



Immunohistochemical analysis of paraffin-embedded human prostate cancer tissue slide using 12170-1-AP (RTF1 antibody) at dilution of 1:200 (under 40x lens. Heat mediated antigen retrieval with Tris-EDTA buffer (pH 9.0).



IP result of anti-RTF1 (IP:12170-1-AP, 4ug; Detection:12170-1-AP 1:500) with HeLa cells lysate 2400ug.