

For Research Use Only

# E2F1 Polyclonal antibody

Catalog Number: 12171-1-AP

Featured Product

51 Publications



## Basic Information

### Catalog Number:

12171-1-AP

### Size:

150ul, Concentration: 450 ug/ml by Nanodrop;

### Source:

Rabbit

### Isotype:

IgG

### Immunogen Catalog Number:

AG2813

### GenBank Accession Number:

BC050369

### GeneID (NCBI):

1869

### UNIPROT ID:

Q01094

### Full Name:

E2F transcription factor 1

### Calculated MW:

437 aa, 47 kDa

### Observed MW:

55 kDa

### Purification Method:

Antigen affinity purification

### Recommended Dilutions:

WB 1:500-1:2000

IHC 1:50-1:200

## Applications

### Tested Applications:

WB, IHC, ELISA

### Cited Applications:

WB, IHC, IF

### Species Specificity:

human, mouse, rat

### Cited Species:

human, mouse, artemia sinica

**Note-IHC: suggested antigen retrieval with TE buffer pH 9.0; (\*) Alternatively, antigen retrieval may be performed with citrate buffer pH 6.0**

### Positive Controls:

**WB** : HEK-293 cells, A431 cells, HeLa cells, mouse brain tissue, NIH/3T3 cells, HepG2 cells, Jurkat cells, LNCaP cells

**IHC** : human breast cancer tissue,

## Background Information

Transcription factor E2F1 (E2F1), also known as RBBP3, is a transcription activator that binds DNA cooperatively with dp proteins through the E2 recognition site, 5'-TTTC[CG]CGC-3' found in the promoter region of a number of genes whose products are involved in cell cycle regulation or in DNA replication. The DRTF1/E2F complex functions in the control of cell-cycle progression from G1 to S phase. E2F-1 binds preferentially RB1 protein, in a cell-cycle dependent manner. It can mediate both cell proliferation and p53-dependent apoptosis. This antibody is a rabbit polyclonal antibody raised against the C-terminal 350 aa sequence of E2F1 protein, specifically recognizes the 47kd human E2F1 protein. The sumoylated E2F1 is about 55 kDa.

## Notable Publications

Author	Pubmed ID	Journal	Application
Liming Wang	31566718	J Cell Physiol	WB
Xiaoman Chen	30207732	Mol Pharm	WB
Juan Liu	26404133	Tumour Biol	WB

## Storage

### Storage:

Store at -20°C. Stable for one year after shipment.

### Storage Buffer:

PBS with 0.02% sodium azide and 50% glycerol pH 7.3.

Aliquoting is unnecessary for -20°C storage

\*\*\* 20ul sizes contain 0.1% BSA

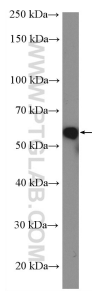
For technical support and original validation data for this product please contact:

T: 1 (888) 4PTGLAB (1-888-478-4522) (toll free in USA), or 1(312) 455-8498 (outside USA)

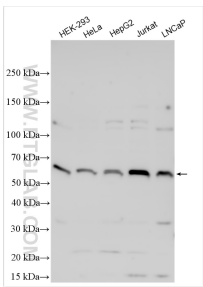
E: [proteintech@ptglab.com](mailto:proteintech@ptglab.com)  
W: [ptglab.com](http://ptglab.com)

This product is exclusively available under Proteintech Group brand and is not available to purchase from any other manufacturer.

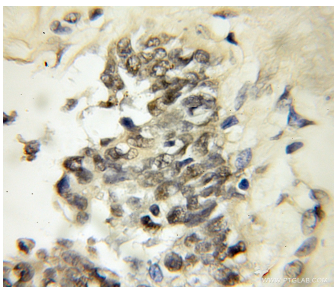
## Selected Validation Data



HeLa cells were subjected to SDS PAGE followed by western blot with 12171-1-AP (E2F1 antibody) at dilution of 1:600 incubated at room temperature for 1.5 hours.



Various lysates were subjected to SDS PAGE followed by western blot with 12171-1-AP (E2F1 antibody) at dilution of 1:1000 incubated at room temperature for 1.5 hours.



Immunohistochemical analysis of paraffin-embedded human breast cancer using 12171-1-AP (E2F1 antibody) at dilution of 1:50 (under 10x lens).