

For Research Use Only

# EFHD2 Polyclonal antibody

Catalog Number: 12181-1-AP



## Basic Information

<b>Catalog Number:</b> 12181-1-AP	<b>GenBank Accession Number:</b> BC013648	<b>Purification Method:</b> Antigen affinity purification
<b>Size:</b> 150ul , Concentration: 180 µg/ml by Bradford method using BSA as the standard;	<b>GeneID (NCBI):</b> 79180	<b>Recommended Dilutions:</b> IHC 1:20-1:200
<b>Source:</b> Rabbit	<b>Full Name:</b> EF-hand domain family, member D2	
<b>Isotype:</b> IgG	<b>Calculated MW:</b> 240 aa, 27 kDa	
<b>Immunogen Catalog Number:</b> AG2826		

## Applications

<b>Tested Applications:</b> IHC, ELISA	<b>Positive Controls:</b> IHC : human medulloblastoma tissue,
<b>Species Specificity:</b> human	
<b>Note-IHC: suggested antigen retrieval with TE buffer pH 9.0; (*) Alternatively, antigen retrieval may be performed with citrate buffer pH 6.0</b>	

## Background Information

EFHD2, also known as Swiprosin-1, is a cytoskeletal protein that has been shown to influence dimerization in a Ca<sup>2+</sup>-dependent manner. The expression of EFHD2 was first observed in CD8<sup>+</sup> T cells. This protein has also been observed in B-cells, lung, brain, and spleen.

## Storage

**Storage:**  
Store at -20°C. Stable for one year after shipment.  
**Storage Buffer:**  
PBS with 0.02% sodium azide and 50% glycerol pH 7.3.  
Aliquoting is unnecessary for -20°C storage

\*\*\* 20ul sizes contain 0.1% BSA

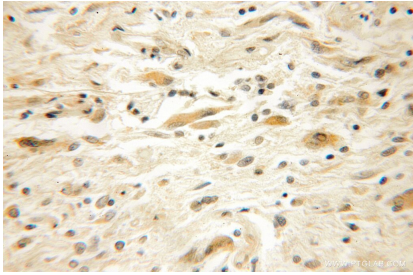
For technical support and original validation data for this product please contact:

T: 1 (888) 4PTGLAB (1-888-478-4522) (toll free in USA), or 1(312) 455-8498 (outside USA)

E: [proteintech@ptglab.com](mailto:proteintech@ptglab.com)  
W: [ptglab.com](http://ptglab.com)

This product is exclusively available under Proteintech Group brand and is not available to purchase from any other manufacturer.

## Selected Validation Data



Immunohistochemical analysis of paraffin-embedded human medulloblastoma using 12181-1-AP (EFHD2 antibody) at dilution of 1:50 (under 10x lens).