

For Research Use Only

NXF2 Polyclonal antibody

Catalog Number: 12185-1-AP

2 Publications



Basic Information

Catalog Number:

12185-1-AP

Size:

150ul, Concentration: 200 ug/ml by Nanodrop and 133 ug/ml by Bradford method using BSA as the standard;

Source:

Rabbit

Isotype:

IgG

Immunogen Catalog Number:

AG2841

GenBank Accession Number:

BC015020

GeneID (NCBI):

56001

UNIPROT ID:

Q9GZY0

Full Name:

nuclear RNA export factor 2

Calculated MW:

626 aa, 72 kDa

Observed MW:

72 kDa

Purification Method:

Antigen affinity purification

Recommended Dilutions:

WB: 1:500-1:2000

IP: 0.5-4.0 ug for 1.0-3.0 mg of total protein lysate

IHC: 1:20-1:200

Applications

Tested Applications:

WB, IP, IHC, ELISA

Cited Applications:

IF

Species Specificity:

human, mouse, rat

Cited Species:

mouse

Positive Controls:

WB : mouse testis tissue,

IP : mouse testis tissue,

IHC : human lymphoma tissue,

Note-IHC: suggested antigen retrieval with TE buffer pH 9.0; (*) Alternatively, antigen retrieval may be performed with citrate buffer pH 6.0

Background Information

NXF2, also named as Nuclear RNA export factor 2 or TAPL2, is a 626 amino acid protein, which contains one TAP-C domain, one RRM domain, one NTF2 domain, and four LRR repeats. NXF2 belongs to the NXF family and is expressed almost exclusively in testis. NXF2 localizes in the nucleus and is involved in the export of mRNA from the nucleus to the cytoplasm.

Notable Publications

| Author | Pubmed ID | Journal | Application |
|------------------|-----------|----------------|-------------|
| Lydia M Castelli | 36857431 | Sci Transl Med | |
| Yin Yimeng Y | 23438076 | Biochem J | IF |

Storage

Storage:

Store at -20°C. Stable for one year after shipment.

Storage Buffer:

PBS with 0.02% sodium azide and 50% glycerol, pH7.3

Aliquoting is unnecessary for -20°C storage

*** 20ul sizes contain 0.1% BSA

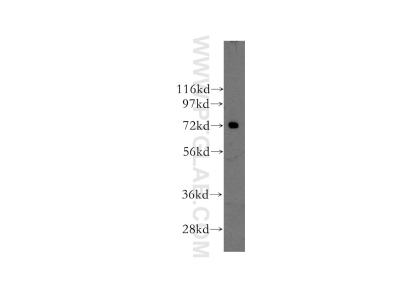
For technical support and original validation data for this product please contact:

T: 1 (888) 4PTGLAB (1-888-478-4522) (toll free in USA), or 1(312) 455-8498 (outside USA)

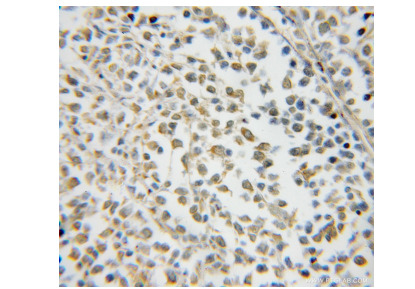
E: proteintech@ptglab.com
W: ptglab.com

This product is exclusively available under Proteintech Group brand and is not available to purchase from any other manufacturer.

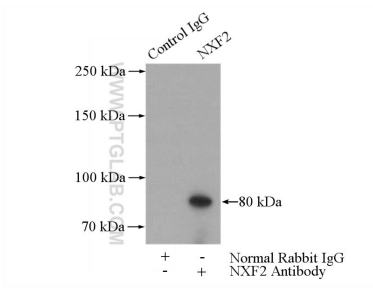
Selected Validation Data



mouse testis tissue were subjected to SDS PAGE followed by western blot with 12185-1-AP (NXF2 antibody) at dilution of 1:400 incubated at room temperature for 1.5 hours.



Immunohistochemical analysis of paraffin-embedded human lymphoma using 12185-1-AP (NXF2 antibody) at dilution of 1:50 (under 10x lens).



IP result of anti-NXF2 (IP:12185-1-AP, 4ug; Detection:12185-1-AP 1:400) with mouse testis tissue lysate 4000ug.