

For Research Use Only

Fibulin 5 Polyclonal antibody

Catalog Number: 12188-1-AP

Featured Product

11 Publications



Basic Information

Catalog Number:

12188-1-AP

Size:

150ul, Concentration: 500 ug/ml by Nanodrop;

Source:

Rabbit

Isotype:

IgG

Immunogen Catalog Number:

AG2859

GenBank Accession Number:

BC022280

GeneID (NCBI):

10516

UNIPROT ID:

Q9UBX5

Full Name:

fibulin 5

Calculated MW:

448 aa, 50 kDa

Observed MW:

55 kDa, 65 kDa

Purification Method:

Antigen affinity purification

Recommended Dilutions:

WB: 1:1000-1:8000

IP: 0.5-4.0 ug for 1.0-3.0 mg of total protein lysate

IHC: 1:50-1:500

Applications

Tested Applications:

WB, IP, IHC, ELISA

Cited Applications:

WB, IHC, IF

Species Specificity:

human, mouse, rat

Cited Species:

human, mouse

Positive Controls:

WB: mouse heart tissue, rat brain tissue, mouse placenta tissue, mouse skeletal muscle tissue, mouse kidney tissue, rat heart tissue

IP: mouse heart tissue,

IHC: mouse lung tissue, human heart tissue, human pancreas tissue

Note-IHC: suggested antigen retrieval with TE buffer pH 9.0; (*) Alternatively, antigen retrieval may be performed with citrate buffer pH 6.0

Background Information

Fibulin-5, also known as EVEC and DANCE, is a extracellular matrix glycoprotein, secreted by various cell types such as vascular smooth muscle cells, fibroblasts and endothelial cells. Structurally, Fibulin-5 contains an Arg-Gly-Asp (RGD) motif and calcium-binding EGF-like domains. It promotes adhesion of endothelial cells through interaction of integrins and the RGD motif. FBLN5 mutations have been described in patients with age-related macular degeneration, as well as being involved in Charcot-Marie-Tooth neuropathies. This antibody got 50 kDa or 66 kDa band in western blotting, the 66 kDa corresponding to fully glycosylated protein.

Notable Publications

Author	Pubmed ID	Journal	Application
Varadarajan Sudhahar	32936699	Am J Physiol Cell Physiol	WB
Wenli Han	25428696	Cell Tissue Res	WB, IHC
Ju-Yi Chen	33781257	J Biomed Sci	WB

Storage

Storage:

Store at -20°C. Stable for one year after shipment.

Storage Buffer:

PBS with 0.02% sodium azide and 50% glycerol, pH7.3

Aliquoting is unnecessary for -20°C storage

*** 20ul sizes contain 0.1% BSA

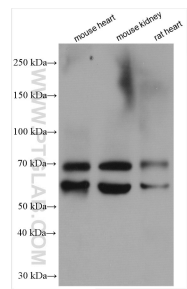
For technical support and original validation data for this product please contact:

T: 1 (888) 4PTGLAB (1-888-478-4522) (toll free in USA), or 1(312) 455-8498 (outside USA)

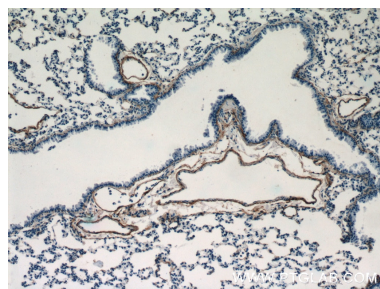
E: proteintech@ptglab.com
W: ptglab.com

This product is exclusively available under Proteintech Group brand and is not available to purchase from any other manufacturer.

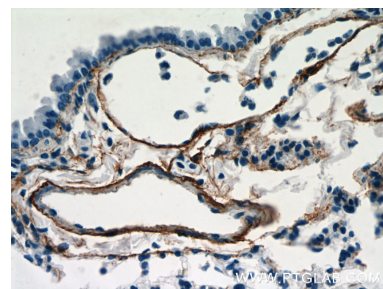
Selected Validation Data



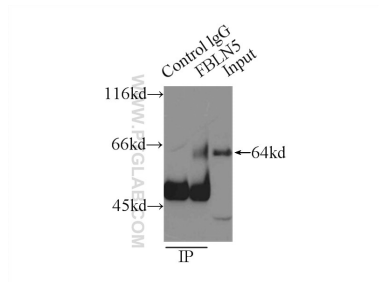
Various lysates were subjected to SDS PAGE followed by western blot with 12188-1-AP (Fibulin 5 antibody) at dilution of 1:4000 incubated at room temperature for 1.5 hours.



Immunohistochemical analysis of paraffin-embedded mouse lung tissue slide using 12188-1-AP (Fibulin 5 antibody at dilution of 1:200.



Immunohistochemical analysis of paraffin-embedded mouse lung tissue slide using 12188-1-AP (Fibulin 5 antibody at dilution of 1:200.



IP result of anti-Fibulin 5 (IP:12188-1-AP, 3ug; Detection:12188-1-AP 1:300) with mouse heart tissue lysate 8000ug.