

For Research Use Only

# Endothelin 1 Polyclonal antibody

Catalog Number: 12191-1-AP

Featured Product

26 Publications



## Basic Information

### Catalog Number:

12191-1-AP

### Size:

150ul, Concentration: 650 ug/ml by Nanodrop;

### Source:

Rabbit

### Isotype:

IgG

### Immunogen Catalog Number:

AG2847

### GenBank Accession Number:

BC009720

### GeneID (NCBI):

1906

### UNIPROT ID:

P05305

### Full Name:

endothelin 1

### Calculated MW:

212 aa, 24 kDa

### Observed MW:

24 kDa

### Purification Method:

Antigen affinity purification

### Recommended Dilutions:

WB 1:200-1:1000

IHC 1:50-1:500

## Applications

### Tested Applications:

WB, IHC, FC (Intra), ELISA

### Cited Applications:

WB, IHC, IF, IP

### Species Specificity:

human, mouse

### Cited Species:

human, mouse, rat

**Note-IHC: suggested antigen retrieval with TE buffer pH 9.0; (\*) Alternatively, antigen retrieval may be performed with citrate buffer pH 6.0**

### Positive Controls:

WB : NIH/3T3 cells,

IHC : mouse lung tissue, mouse placenta tissue

## Background Information

EDN1, also named as Endothelin-1, PPET1 and ET-1, belongs to the endothelin/sarafotoxin family. Endothelins are endothelium-derived vasoconstrictor peptides. Emerging basic science, and animal and human data all suggest that EDN1 is a potentially important contributor in the pathobiology of fibrosing disorders, including those that affect the lung (PMID:20055532).

## Notable Publications

Author	Pubmed ID	Journal	Application
Hong Li	36180828	Mol Med	WB
Dandan Wang	36161694	Environ Toxicol	WB
Peng Liu	36071548	J Cell Mol Med	WB

## Storage

### Storage:

Store at -20°C. Stable for one year after shipment.

### Storage Buffer:

PBS with 0.02% sodium azide and 50% glycerol, pH7.3

Aliquoting is unnecessary for -20°C storage

\*\*\* 20ul sizes contain 0.1% BSA

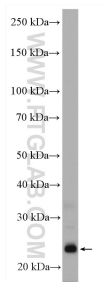
For technical support and original validation data for this product please contact:

T: 1 (888) 4PTGLAB (1-888-478-4522) (toll free in USA), or 1(312) 455-8498 (outside USA)

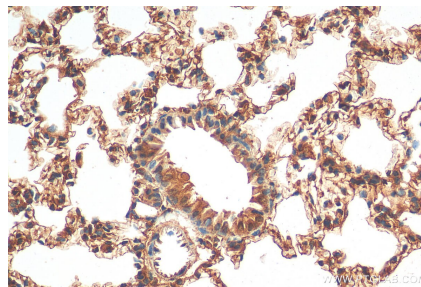
E: [proteintech@ptglab.com](mailto:proteintech@ptglab.com)  
W: [ptglab.com](http://ptglab.com)

This product is exclusively available under Proteintech Group brand and is not available to purchase from any other manufacturer.

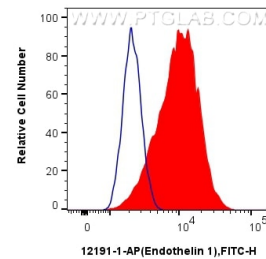
## Selected Validation Data



NIH/3T3 cells were subjected to SDS PAGE followed by western blot with 12191-1-AP (Endothelin 1 antibody) at dilution of 1:300 incubated at room temperature for 1.5 hours.



Immunohistochemical analysis of paraffin-embedded mouse lung tissue slide using 12191-1-AP (Endothelin 1 antibody) at dilution of 1:200 (under 40x lens). Heat mediated antigen retrieval with Tris-EDTA buffer (pH 9.0).



1X10<sup>6</sup> HUVEC cells were intracellularly stained with 0.4 ug Anti-Human Endothelin 1 (12191-1-AP) and CoraLite®488-Conjugated Goat Anti-Rabbit IgG(H+L) at dilution 1:1000 (red), or 0.4 ug Rabbit IgG control Rabbit PolyAb (30000-O-AP, Clone: ) (blue). Cells were fixed with 4% PFA and permeabilized with Flow Cytometry Perm Buffer (PF00011-C).