

For Research Use Only

# WWP2 Polyclonal antibody

Catalog Number: 12197-1-AP

Featured Product

25 Publications



## Basic Information

### Catalog Number:

12197-1-AP

### Size:

150ul, Concentration: 800 ug/ml by Nanodrop;

### Source:

Rabbit

### Isotype:

IgG

### Immunogen Catalog Number:

AG2835

### GenBank Accession Number:

BC013645

### GeneID (NCBI):

11060

### UNIPROT ID:

O00308

### Full Name:

WW domain containing E3 ubiquitin protein ligase 2

### Calculated MW:

870 aa, 99 kDa

### Observed MW:

110-115 kDa

### Purification Method:

Antigen affinity purification

### Recommended Dilutions:

WB: 1:1000-1:6000

IP: 0.5-4.0 ug for 1.0-3.0 mg of total protein lysate

IHC: 1:20-1:200

## Applications

### Tested Applications:

WB, IP, IHC, ELISA

### Cited Applications:

WB, IHC, IF, IP, CoIP

### Species Specificity:

human, mouse, rat

### Cited Species:

human, mouse, rat

### Positive Controls:

WB: HepG2 cells, A549 cells

IP: A549 cells,

IHC: human pancreas cancer tissue,

**Note-IHC: suggested antigen retrieval with TE buffer pH 9.0; (\*) Alternatively, antigen retrieval may be performed with citrate buffer pH 6.0**

## Background Information

WWP2(WW domain-containing protein 2) is also named as AIP2 and belongs to the NEDD4-like protein family. It functions as an E3 ubiquitin ligase for PTEN that plays a vital role in tumour-cell survival and is also involved in regulating transcription, embryonic stem-cell fate, cellular transport and T-cell activation processes(PMID:21532586).WWP2, which specifically interacted with ES cell-specific transcription factor Oct-4 and promoted its ubiquitination both in vitro and in vivo, is a ubiquitously expressed protein and exists in both cytoplasmic and nuclear compartments in ES cells(PMID:15047715).

## Notable Publications

Author	Pubmed ID	Journal	Application
Jing Yan	36211818	Oxid Med Cell Longev	WB
Xinxin Lu	36257929	Cell Death Discov	WB,IF,IP
Mao-Xu Ge	31621893	Br J Pharmacol	WB

## Storage

### Storage:

Store at -20°C. Stable for one year after shipment.

### Storage Buffer:

PBS with 0.02% sodium azide and 50% glycerol, pH7.3

Aliquoting is unnecessary for -20°C storage

\*\*\* 20ul sizes contain 0.1% BSA

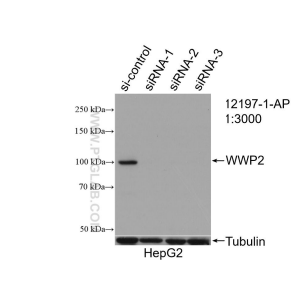
For technical support and original validation data for this product please contact:

T: 1 (888) 4PTGLAB (1-888-478-4522) (toll free in USA), or 1(312) 455-8498 (outside USA)

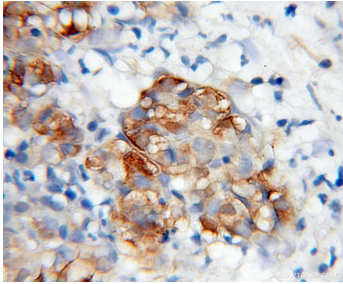
E: [proteintech@ptglab.com](mailto:proteintech@ptglab.com)  
W: [ptglab.com](http://ptglab.com)

This product is exclusively available under Proteintech Group brand and is not available to purchase from any other manufacturer.

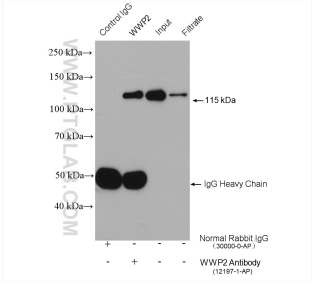
Selected Validation Data



WB result of WWP2 antibody (12197-1-AP; 1:3000; incubated at room temperature for 1.5 hours) with sh-Control and sh-WWP2 transfected HepG2 cells.



Immunohistochemical analysis of paraffin-embedded human pancreas cancer using 12197-1-AP (WWP2 antibody) at dilution of 1:100 (under 40x lens).



IP result of anti-WWP2 (IP:12197-1-AP, 4ug; Detection:12197-1-AP 1:1000) with A549 cells lysate 800 ug.