

For Research Use Only

# SSBP1 Polyclonal antibody

Catalog Number: 12212-1-AP

Featured Product

29 Publications



## Basic Information

### Catalog Number:

12212-1-AP

### Size:

150ul, Concentration: 800 ug/ml by Nanodrop;

### Source:

Rabbit

### Isotype:

IgG

### Immunogen Catalog Number:

AG2860

### GenBank Accession Number:

BC000895

### GeneID (NCBI):

6742

### UNIPROT ID:

Q04837

### Full Name:

single-stranded DNA binding protein 1

### Calculated MW:

148 aa, 17 kDa

### Observed MW:

17 kDa

### Purification Method:

Antigen affinity purification

### Recommended Dilutions:

WB 1:500-1:1000

IHC 1:50-1:500

IF/ICC 1:50-1:500

## Applications

### Tested Applications:

WB, IHC, IF/ICC, ELISA

### Cited Applications:

WB, IHC, IF, ChIP

### Species Specificity:

human, mouse, rat

### Cited Species:

human, mouse, zebrafish

**Note-IHC: suggested antigen retrieval with TE buffer pH 9.0; (\*) Alternatively, antigen retrieval may be performed with citrate buffer pH 6.0**

### Positive Controls:

**WB** : A549 cells, A375 cells, mouse pancreas tissue, rat pancreas tissue, Caco-2 cells

**IHC** : human stomach cancer tissue, human ovary cancer tissue

**IF/ICC** : A375 cells,

## Background Information

SSBP1 is a housekeeping gene involved in mitochondrial biogenesis. It binds preferentially and cooperatively to ss-DNA in the maintenance of genome stability. SSBP1 acted as a homotetramer to stabilize the displaced single strand of the normal and expanded displacement loop (D loop) during mtDNA replication, thus preventing formation of secondary single-stranded DNA structures, which could stop the gamma-DNA polymerase

## Notable Publications

Author	Pubmed ID	Journal	Application
Timo Rey	32989247	Nat Cell Biol	WB
Margaret A Gustafson	31479473	PLoS One	WB
Aindrila Chatterjee	27768893	Cell	WB

## Storage

### Storage:

Store at -20°C. Stable for one year after shipment.

### Storage Buffer:

PBS with 0.02% sodium azide and 50% glycerol pH 7.3.

Aliquoting is unnecessary for -20°C storage

\*\*\* 20ul sizes contain 0.1% BSA

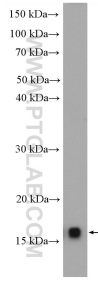
For technical support and original validation data for this product please contact:

T: 1 (888) 4PTGLAB (1-888-478-4522) (toll free in USA), or 1(312) 455-8498 (outside USA)

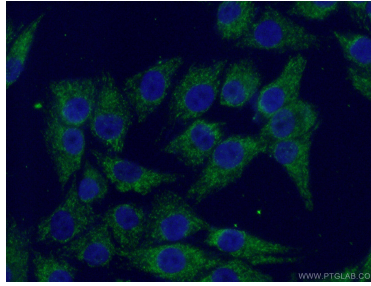
E: [proteintech@ptglab.com](mailto:proteintech@ptglab.com)  
W: [ptglab.com](http://ptglab.com)

This product is exclusively available under Proteintech Group brand and is not available to purchase from any other manufacturer.

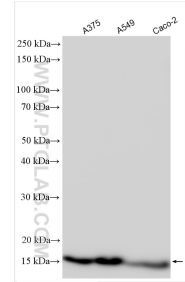
## Selected Validation Data



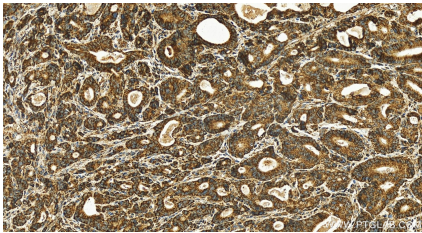
A549 cells were subjected to SDS PAGE followed by western blot with 12212-1-AP (SSBP1 antibody) at dilution of 1:600 incubated at 4 degree celsius over night.



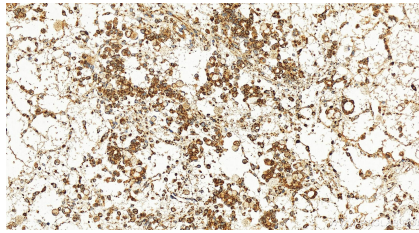
Immunofluorescent analysis of (4% PFA) fixed A375 cells using 12212-1-AP (SSBP1 antibody) at dilution of 1:50 and Alexa Fluor 488-conjugated AffiniPure Goat Anti-Rabbit IgG(H+L).



Various lysates were subjected to SDS PAGE followed by western blot with 12212-1-AP (SSBP1 antibody) at dilution of 1:4000 incubated at room temperature for 1.5 hours.



Immunohistochemical analysis of paraffin-embedded human stomach cancer tissue slide using 12212-1-AP (SSBP1 antibody) at dilution of 1:100 (under 20x lens). Heat mediated antigen retrieval with Tris-EDTA buffer (pH 9.0).



Immunohistochemical analysis of paraffin-embedded human ovary cancer tissue slide using 12212-1-AP (SSBP1 antibody) at dilution of 1:100 (under 20x lens). Heat mediated antigen retrieval with Tris-EDTA buffer (pH 9.0).