

For Research Use Only

CREG1 Polyclonal antibody

Catalog Number:12220-1-AP

Featured Product

7 Publications



Basic Information

Catalog Number:

12220-1-AP

Size:

150ul , Concentration: 700 ug/ml by Nanodrop and 233 ug/ml by Bradford method using BSA as the standard;

Source:

Rabbit

Isotype:

IgG

Immunogen Catalog Number:

AG2901

GenBank Accession Number:

BC008628

GeneID (NCBI):

8804

UNIPROT ID:

O75629

Full Name:

cellular repressor of E1A-stimulated genes 1

Calculated MW:

220 aa, 24 kDa

Observed MW:

32 kDa

Purification Method:

Antigen affinity purification

Recommended Dilutions:

WB 1:500-1:1000

Applications

Tested Applications:

WB, ELISA

Cited Applications:

WB, IHC, IF

Species Specificity:

human, mouse, rat

Cited Species:

human, mouse, rat, bovine

Positive Controls:

WB : Jurkat cells, K-562 cells, mouse spleen tissue

Background Information

CREG1 (Cellular repressor of E1A-stimulated genes 1) shares limited sequence similarity with E1A and binds both the general transcription factor TBP and the tumor suppressor pRb in vitro (PMID:9710587). The monomers of CREG can associate into dimers and the dimerization is observed not only in the crystal but also in solution (PMID:16344469). The cellular repressor of E1A-stimulated genes (CREG) is a secreted glycoprotein that inhibits cell proliferation and/or enhances differentiation. CREG is widely expressed in adult tissues such as the brain, heart, lungs, liver, intestines and kidneys in mice (PMID:20857207).

Notable Publications

| Author | Pubmed ID | Journal | Application |
|---------------------|-----------|----------------|-------------|
| Tatsuya Kusudo | 34647124 | J Biochem | WB,IHC |
| Yong Zhang | 34734480 | J Cell Mol Med | WB |
| Michihiro Hashimoto | 30917000 | FASEB J | |

Storage

Storage:

Store at -20°C. Stable for one year after shipment.

Storage Buffer:

PBS with 0.02% sodium azide and 50% glycerol pH 7.3.

Aliquoting is unnecessary for -20°C storage

*** 20ul sizes contain 0.1% BSA

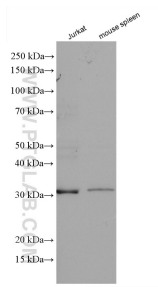
For technical support and original validation data for this product please contact:

T: 1 (888) 4PTGLAB (1-888-478-4522) (toll free in USA), or 1(312) 455-8498 (outside USA)

E: proteintech@ptglab.com
W: ptglab.com

This product is exclusively available under Proteintech Group brand and is not available to purchase from any other manufacturer.

Selected Validation Data



Various lysates were subjected to SDS PAGE followed by western blot with 12220-1-AP (CREG1 antibody) at dilution of 1:600 incubated at room temperature for 1.5 hours.