

For Research Use Only

DPEP1 Polyclonal antibody

Catalog Number: 12222-1-AP

Featured Product

6 Publications



Basic Information

Catalog Number:

12222-1-AP

Size:

150ul, Concentration: 400 ug/ml by Nanodrop;

Source:

Rabbit

Isotype:

IgG

Immunogen Catalog Number:

AG2907

GenBank Accession Number:

BC017023

GeneID (NCBI):

1800

UNIPROT ID:

P16444

Full Name:

dipeptidase 1 (renal)

Calculated MW:

411 aa, 46 kDa

Observed MW:

46 kDa

Purification Method:

Antigen affinity purification

Recommended Dilutions:

WB 1:1000-1:5000

Applications

Tested Applications:

WB, ELISA

Cited Applications:

WB

Species Specificity:

human, mouse, rat

Cited Species:

human, mouse, monkey

Positive Controls:

WB : HepG2 cells, mouse liver tissue, HEK-293 cells

Background Information

DPEP1(Dipeptidase 1) is also named as MDP, RDP and belongs to the peptidase M19 family. It is a glycoprotein that plays an important role in the regulation of leukotriene activity. DPEP1 converts leukotriene D4 to leukotriene E4.

Notable Publications

Author	Pubmed ID	Journal	Application
Arthur Lau	29863495	J Clin Invest	
Saurav Roy Choudhury	31442408	Cell	WB
Anne von Mässenhausen	35108055	Sci Adv	WB,FC

Storage

Storage:

Store at -20°C. Stable for one year after shipment.

Storage Buffer:

PBS with 0.02% sodium azide and 50% glycerol pH 7.3.

Aliquoting is unnecessary for -20°C storage

*** 20ul sizes contain 0.1%BSA

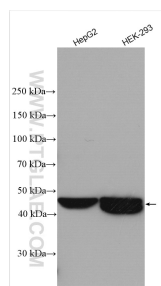
For technical support and original validation data for this product please contact:

T: 1 (888) 4PTGLAB (1-888-478-4522) (toll free in USA), or 1(312) 455-8498 (outside USA)

E: proteintech@ptglab.com
W: ptglab.com

This product is exclusively available under Proteintech Group brand and is not available to purchase from any other manufacturer.

Selected Validation Data



Various lysates were subjected to SDS PAGE followed by western blot with 12222-1-AP (DPEP1 antibody) at dilution of 1:2500 incubated at room temperature for 1.5 hours.