

For Research Use Only

# EIF4E2 Polyclonal antibody

Catalog Number: 12227-1-AP

5 Publications



## Basic Information

### Catalog Number:

12227-1-AP

### Size:

150ul, Concentration: 600 ug/ml by Nanodrop and 220 ug/ml by Bradford method using BSA as the standard;

### Source:

Rabbit

### Isotype:

IgG

### Immunogen Catalog Number:

AG2864

### GenBank Accession Number:

BC021690

### GeneID (NCBI):

9470

### UNIPROT ID:

O60573

### Full Name:

eukaryotic translation initiation factor 4E family member 2

### Calculated MW:

245 aa, 28 kDa

### Observed MW:

28 kDa

### Purification Method:

Antigen affinity purification

### Recommended Dilutions:

WB 1:500-1:1000

IP 0.5-4.0 ug for 1.0-3.0 mg of total protein lysate

IHC 1:50-1:500

## Applications

### Tested Applications:

WB, IP, IHC, ELISA

### Cited Applications:

WB, RIP, IHC

### Species Specificity:

human, mouse, rat

### Cited Species:

human

**Note-IHC: suggested antigen retrieval with TE buffer pH 9.0; (\*) Alternatively, antigen retrieval may be performed with citrate buffer pH 6.0**

### Positive Controls:

WB : HeLa cells, MCF-7 cells, mouse kidney tissue

IP : MCF-7 cells,

IHC : human breast cancer tissue,

## Notable Publications

Author	Pubmed ID	Journal	Application
Yoichiro Sugimoto	36097292	Nat Struct Mol Biol	WB
Limei Zou	35756894	iScience	WB
Ji Geng	38388640	Nat Commun	WB

## Storage

### Storage:

Store at -20°C. Stable for one year after shipment.

### Storage Buffer:

PBS with 0.02% sodium azide and 50% glycerol pH 7.3.

Aliquoting is unnecessary for -20°C storage

\*\*\* 20ul sizes contain 0.1% BSA

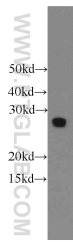
For technical support and original validation data for this product please contact:

T: 1 (888) 4PTGLAB (1-888-478-4522) (toll free in USA), or 1(312) 455-8498 (outside USA)

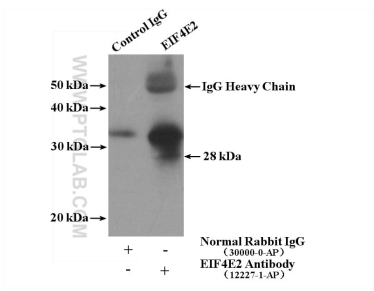
E: [proteintech@ptglab.com](mailto:proteintech@ptglab.com)  
W: [ptglab.com](http://ptglab.com)

This product is exclusively available under Proteintech Group brand and is not available to purchase from any other manufacturer.

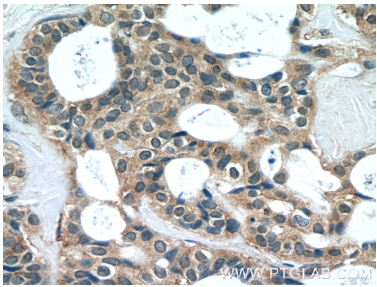
Selected Validation Data



HeLa cells were subjected to SDS PAGE followed by western blot with 12227-1-AP (EIF4E2 antibody) at dilution of 1:500 incubated at room temperature for 1.5 hours.



IP result of anti-EIF4E2 (IP:12227-1-AP, 4ug; Detection:12227-1-AP 1:500) with MCF-7 cells lysate 1280ug.



Immunohistochemical analysis of paraffin-embedded human breast cancer tissue slide using 12227-1-AP (EIF4E2 Antibody) at dilution of 1:50 (under 40x lens).