

For Research Use Only

# NDP52 Polyclonal antibody

Catalog Number: 12229-1-AP

Featured Product

59 Publications



## Basic Information

### Catalog Number:

12229-1-AP

### Size:

150ul, Concentration: 600 ug/ml by Nanodrop and 300 ug/ml by Bradford method using BSA as the standard;

### Source:

Rabbit

### Isotype:

IgG

### Immunogen Catalog Number:

AG2866

### GenBank Accession Number:

BC015893

### GeneID (NCBI):

10241

### UNIPROT ID:

Q13137

### Full Name:

calcium binding and coiled-coil domain 2

### Calculated MW:

446 aa, 52 kDa

### Observed MW:

52 kDa

### Purification Method:

Antigen affinity purification

### Recommended Dilutions:

WB: 1:500-1:2000

IP: 0.5-4.0 ug for 1.0-3.0 mg of total protein lysate

IHC: 1:200-1:800

IF/ICC: 1:200-1:800

## Applications

### Tested Applications:

WB, IHC, IF/ICC, IP, ELISA

### Cited Applications:

WB, IHC, IF, IP, CoIP

### Species Specificity:

human, mouse, rat

### Cited Species:

human, mouse, rat, pig, monkey

**Note-IHC: suggested antigen retrieval with TE buffer pH 9.0; (\*) Alternatively, antigen retrieval may be performed with citrate buffer pH 6.0**

### Positive Controls:

WB: HeLa cells, rat skeletal muscle tissue

IP: HeLa cells,

IHC: human ovary cancer tissue, human ovary tumor tissue, human skeletal muscle tissue

IF/ICC: HeLa cells,

## Background Information

NDP52, also named as CALCOCO2, is an autophagy receptor. It plays a role in ruffle formation and actin cytoskeleton organization. Mouse/Rat NDP52 has some isoforms with MW 28-40 kDa and 67 kDa. Human NDP52 has some isoforms with MW 43-47 kDa and 52-55 kDa,

## Notable Publications

Author	Pubmed ID	Journal	Application
Shouheng Jin	28965816	Mol Cell	WB
Sebastian Boland	36207292	Nat Commun	WB
Jureepon Roboon	36274991	Front Cell Neurosci	WB

## Storage

### Storage:

Store at -20°C. Stable for one year after shipment.

### Storage Buffer:

PBS with 0.02% sodium azide and 50% glycerol, pH7.3

Aliquoting is unnecessary for -20°C storage

\*\*\* 20ul sizes contain 0.1% BSA

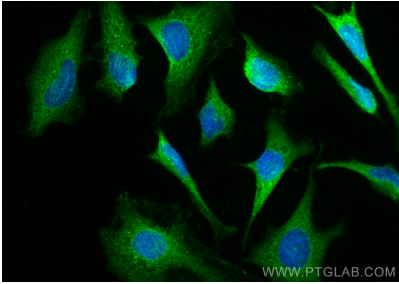
For technical support and original validation data for this product please contact:

T: 1 (888) 4PTGLAB (1-888-478-4522) (toll free in USA), or 1(312) 455-8498 (outside USA)

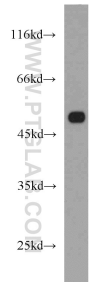
E: [proteintech@ptglab.com](mailto:proteintech@ptglab.com)  
W: [ptglab.com](http://ptglab.com)

This product is exclusively available under Proteintech Group brand and is not available to purchase from any other manufacturer.

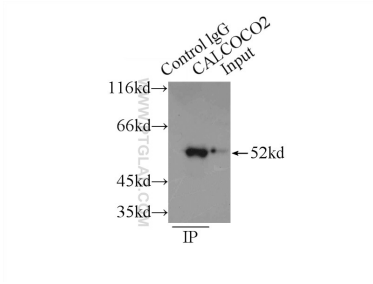
Selected Validation Data



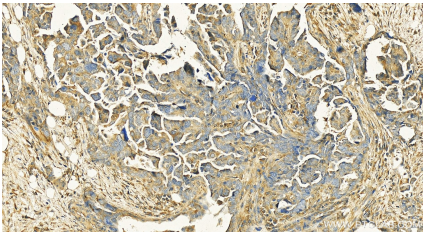
Immunofluorescent analysis of (-20°C Methanol) fixed HeLa cells using NDP52 antibody (12229-1-AP) at dilution of 1:400 and CoraLite®488-Conjugated AffiniPure Goat Anti-Rabbit IgG(H+L).



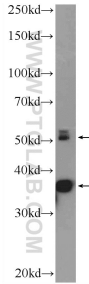
HeLa cells were subjected to SDS PAGE followed by western blot with 12229-1-AP (NDP52 antibody) at dilution of 1:1000 incubated at room temperature for 1.5 hours.



IP result of anti-NDP52 (IP:12229-1-AP, 3ug; Detection:12229-1-AP 1:1000) with HeLa cells lysate 2150ug.



Immunohistochemical analysis of paraffin-embedded human ovarian cancer slide using 12229-1-AP (NDP52 antibody) at dilution of 1:400 (under 20x lens). Heat mediated antigen retrieval with Tris-EDTA buffer (pH 9.0).



rat skeletal muscle tissue were subjected to SDS PAGE followed by western blot with 12229-1-AP (NDP52 Antibody) at dilution of 1:1000 incubated at room temperature for 1.5 hours.