

For Research Use Only

# CBY1 Polyclonal antibody

Catalog Number: 12239-1-AP

5 Publications



## Basic Information

### Catalog Number:

12239-1-AP

### Size:

150ul, Concentration: 550 ug/ml by Nanodrop and 300 ug/ml by Bradford method using BSA as the standard;

### Source:

Rabbit

### Isotype:

IgG

### Immunogen Catalog Number:

AG2882

### GenBank Accession Number:

BC016139

### GeneID (NCBI):

25776

### UNIPROT ID:

Q9Y3M2

### Full Name:

chibby homolog 1 (Drosophila)

### Calculated MW:

126 aa, 14 kDa

### Observed MW:

30-35 kDa

### Purification Method:

Antigen affinity purification

### Recommended Dilutions:

WB 1:500-1:2000

IP 0.5-4.0 ug for 1.0-3.0 mg of total protein lysate

IHC 1:20-1:200

## Applications

### Tested Applications:

WB, IP, IHC, ELISA

### Cited Applications:

WB, IHC, IF

### Species Specificity:

human, mouse, rat

### Cited Species:

human, mouse

**Note-IHC: suggested antigen retrieval with TE buffer pH 9.0; (\*) Alternatively, antigen retrieval may be performed with citrate buffer pH 6.0**

### Positive Controls:

WB : mouse liver tissue, mouse kidney tissue

IP : mouse liver tissue,

IHC : human kidney tissue, human heart tissue

## Notable Publications

Author	Pubmed ID	Journal	Application
Michael C Burke	25313408	J Cell Biol	WB
Lilong Guo	33811421	Dev Dyn	WB,IF
Qingqing Chen	38726137	Heliyon	WB

## Storage

### Storage:

Store at -20°C. Stable for one year after shipment.

### Storage Buffer:

PBS with 0.02% sodium azide and 50% glycerol pH 7.3.

Aliquoting is unnecessary for -20°C storage

\*\*\* 20ul sizes contain 0.1% BSA

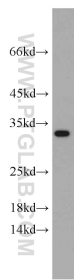
For technical support and original validation data for this product please contact:

T: 1 (888) 4PTGLAB (1-888-478-4522) (toll free in USA), or 1(312) 455-8498 (outside USA)

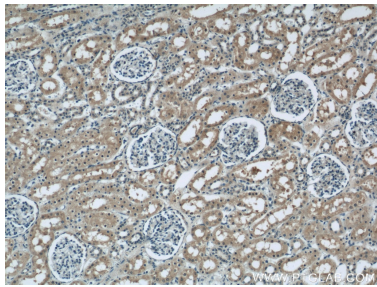
E: [proteintech@ptglab.com](mailto:proteintech@ptglab.com)  
W: [ptglab.com](http://ptglab.com)

This product is exclusively available under Proteintech Group brand and is not available to purchase from any other manufacturer.

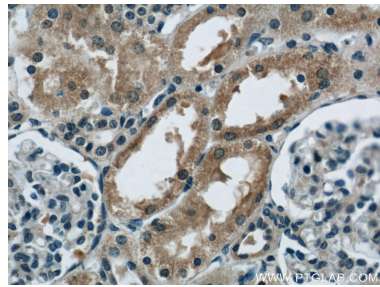
Selected Validation Data



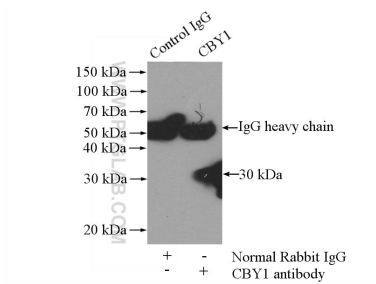
mouse liver tissue were subjected to SDS PAGE followed by western blot with 12239-1-AP (CBY1 antibody) at dilution of 1:500 incubated at room temperature for 1.5 hours.



Immunohistochemical analysis of paraffin-embedded human kidney using 12239-1-AP (CBY1 antibody) at dilution of 1:50 (under 10x lens).



Immunohistochemical analysis of paraffin-embedded human kidney using 12239-1-AP (CBY1 antibody) at dilution of 1:50 (under 40x lens).



IP result of anti-CBY1 (IP:12239-1-AP, 4ug; Detection:12239-1-AP 1:500) with mouse liver tissue lysate 4000ug.