

For Research Use Only

SLC25A11 Polyclonal antibody

Catalog Number: 12253-1-AP

Featured Product

3 Publications



Basic Information

Catalog Number:

12253-1-AP

Size:

150ul, Concentration: 1300 ug/ml by Nanodrop;

Source:

Rabbit

Isotype:

IgG

Immunogen Catalog Number:

AG2903

GenBank Accession Number:

BC016294

GeneID (NCBI):

8402

UNIPROT ID:

Q02978

Full Name:

solute carrier family 25 (mitochondrial carrier; oxoglutarate carrier), member 11

Calculated MW:

314 aa, 34 kDa

Observed MW:

28-34 kDa

Purification Method:

Antigen affinity purification

Recommended Dilutions:

WB 1:500-1:2000

IP 0.5-4.0 ug for 1.0-3.0 mg of total protein lysate

IHC 1:50-1:500

IF/ICC 1:50-1:500

Applications

Tested Applications:

WB, IHC, IF/ICC, IP, ELISA

Cited Applications:

WB, IF, IP

Species Specificity:

human

Cited Species:

human, mouse

Note-IHC: suggested antigen retrieval with TE buffer pH 9.0; (*) Alternatively, antigen retrieval may be performed with citrate buffer pH 6.0

Positive Controls:

WB: Jurkat cells, human kidney tissue, HEK-293 cells, Raji cells

IP: HEK-293 cells,

IHC: human stomach cancer tissue,

IF/ICC: HEK-293 cells,

Notable Publications

Author	Pubmed ID	Journal	Application
Na Ta	36037337	Proc Natl Acad Sci U S A	WB,IF
Yuyang Liu	37917749	Science	WB
Kun Meng	37009826	EMBO Rep	WB,IF,IP

Storage

Storage:

Store at -20°C. Stable for one year after shipment.

Storage Buffer:

PBS with 0.02% sodium azide and 50% glycerol pH 7.3.

Aliquoting is unnecessary for -20°C storage

*** 20ul sizes contain 0.1% BSA

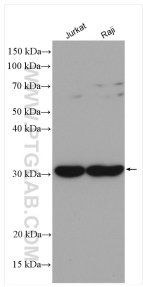
For technical support and original validation data for this product please contact:

T: 1 (888) 4PTGLAB (1-888-478-4522) (toll free in USA), or 1(312) 455-8498 (outside USA)

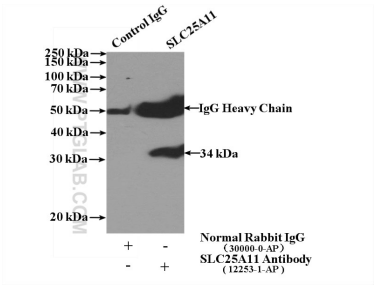
E: proteintech@ptglab.com
W: ptglab.com

This product is exclusively available under Proteintech Group brand and is not available to purchase from any other manufacturer.

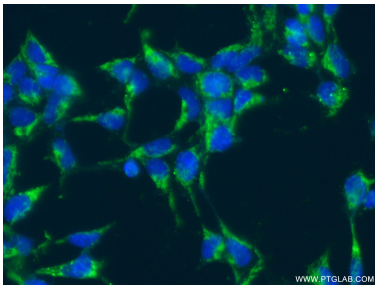
Selected Validation Data



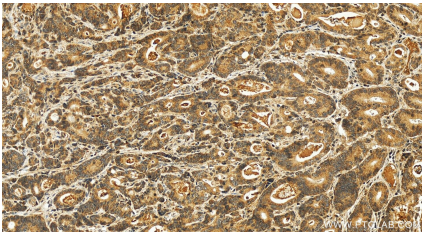
Various lysates were subjected to SDS PAGE followed by western blot with 12253-1-AP (SLC25A11 antibody) at dilution of 1:1000 incubated at room temperature for 1.5 hours.



IP result of anti-SLC25A11 (IP:12253-1-AP, 4ug; Detection:12253-1-AP 1:1000) with HEK-293 cells lysate 1560ug.



Immunofluorescent analysis of (4% PFA) fixed HEK-293 cells using 12253-1-AP (SLC25A11 antibody) at dilution of 1:50 and Alexa Fluor 488-conjugated AffiniPure Goat Anti-Rabbit IgG(H+L).



Immunohistochemical analysis of paraffin-embedded human stomach cancer tissue slide using 12253-1-AP (SLC25A11 antibody) at dilution of 1:200 (under 20x lens). Heat mediated antigen retrieval with Tris-EDTA buffer (pH 9.0).