

For Research Use Only

ETFA Polyclonal antibody

Catalog Number: 12262-1-AP

7 Publications



Basic Information

Catalog Number:

12262-1-AP

Size:

150ul, Concentration: 450 ug/ml by Nanodrop and 267 ug/ml by Bradford method using BSA as the standard;

Source:

Rabbit

Isotype:

IgG

Immunogen Catalog Number:

AG2931

GenBank Accession Number:

BC015526

GeneID (NCBI):

2108

UNIPROT ID:

P13804

Full Name:

electron-transfer-flavoprotein, alpha polypeptide

Calculated MW:

30 kDa

Observed MW:

30 kDa

Purification Method:

Antigen affinity purification

Recommended Dilutions:

WB: 1:1000-1:3000

IHC: 1:50-1:500

IF/ICC: 1:50-1:500

FC (Intra): 0.80 ug per 10⁶ cells in a 100 µl suspension

Applications

Tested Applications:

WB, IHC, IF/ICC, FC (Intra), ELISA

Cited Applications:

WB, IF

Species Specificity:

human, mouse, rat

Cited Species:

human, mouse

Positive Controls:

WB: Y79 cells, human ileum tissue, mouse small intestine tissue, rat small intestine tissue

IHC: human breast cancer tissue,

IF/ICC: HeLa cells,

FC (Intra): MCF-7 cells,

Note-IHC: suggested antigen retrieval with TE buffer pH 9.0; (*) Alternatively, antigen retrieval may be performed with citrate buffer pH 6.0

Background Information

Electron transfer flavoprotein (ETF) exists in the mitochondrial matrix as a heterodimer of 30 kD alpha subunits (ETFA) and 28 kD beta subunits (ETFB) and contains 1 flavin adenine dinucleotide (FAD) and 1 adenosine 5-prime monophosphate (AMP) per heterodimer. ETFA serves as a specific electron acceptor for several dehydrogenases, including five acyl-CoA dehydrogenases, glutaryl-CoA and sarcosine dehydrogenase.

Notable Publications

Author	Pubmed ID	Journal	Application
Bin Jiang	35381197	Mol Cell	IF
Min-Zhi Peng	35727412	Cell Mol Life Sci	WB
Singaravelu Ragunath R	20181094	Proteome Sci	WB

Storage

Storage:

Store at -20°C. Stable for one year after shipment.

Storage Buffer:

PBS with 0.02% sodium azide and 50% glycerol, pH7.3

Aliquoting is unnecessary for -20°C storage

*** 20ul sizes contain 0.1% BSA

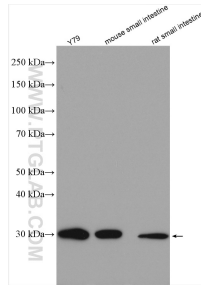
For technical support and original validation data for this product please contact:

T: 1 (888) 4PTGLAB (1-888-478-4522) (toll free in USA), or 1(312) 455-8498 (outside USA)

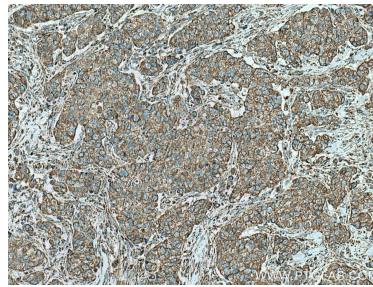
E: proteintech@ptglab.com
W: ptglab.com

This product is exclusively available under Proteintech Group brand and is not available to purchase from any other manufacturer.

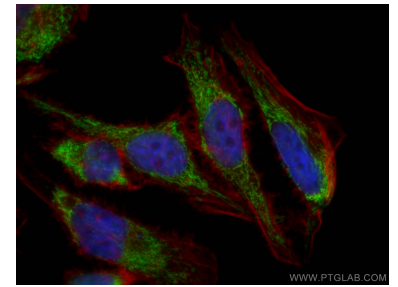
Selected Validation Data



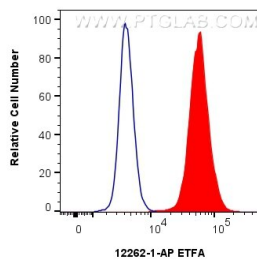
Various lysates were subjected to SDS PAGE followed by western blot with 12262-1-AP (ETFA antibody) at dilution of 1:2000 incubated at room temperature for 1.5 hours.



Immunohistochemical analysis of paraffin-embedded human breast cancer tissue slide using 12262-1-AP (ETFA antibody) at dilution of 1:200 (under 10x lens). Heat mediated antigen retrieval with Tris-EDTA buffer (pH 9.0).



Immunofluorescent analysis of (4% PFA) fixed HeLa cells using ETFA antibody (12262-1-AP) at dilution of 1:200 and CoraLite®488-Conjugated Goat Anti-Rabbit IgG(H+L), 594phalloidin (red).



1x10⁶ MCF-7 cells were intracellularly stained with 0.8 ug ETFA Polyclonal antibody (12262-1-AP) and CoraLite®488-Conjugated Goat Anti-Rabbit IgG(H+L) (SA00013-2)(red), or 0.8 ug Rabbit IgG control Rabbit PolyAb (30000-0-AP) (blue). Cells were fixed with 4% PFA and permeabilized with Flow Cytometry Perm Buffer (PF00011-C).