

For Research Use Only

PI16 Polyclonal antibody

Catalog Number: 12267-1-AP

Featured Product

1 Publications



Basic Information

Catalog Number:

12267-1-AP

Size:

150ul, Concentration: 260 ug/ml by Nanodrop and 133 ug/ml by Bradford method using BSA as the standard;

Source:

Rabbit

Isotype:

IgG

Immunogen Catalog Number:

AG2925

GenBank Accession Number:

BC022399

GeneID (NCBI):

221476

UNIPROT ID:

Q6UXB8

Full Name:

peptidase inhibitor 16

Calculated MW:

463 aa, 49 kDa

Observed MW:

49 kDa

Purification Method:

Antigen affinity purification

Recommended Dilutions:

WB 1:500-1:2000

IHC 1:50-1:500

Applications

Tested Applications:

WB, IHC, ELISA

Cited Applications:

WB, IHC, CoIP

Species Specificity:

human, mouse

Cited Species:

human, mouse

Note-IHC: suggested antigen retrieval with TE buffer pH 9.0; (*) Alternatively, antigen retrieval may be performed with citrate buffer pH 6.0

Positive Controls:

WB : SKOV-3 cells, A2780 cells, COLO 320 cells, A549 cells, HeLa cells

IHC : human liver cancer tissue, human pancreas cancer tissue, mouse testis tissue

Background Information

Peptidase inhibitor 16 (PI16) is localized to chromosome 6p21.2 in human, which is also called as prostate secretory protein 94-binding protein (PSPBP). It is a member of the cysteine-rich secretory proteins, antigen 5, and pathogenesis-related proteins (CAP) superfamily (PMID: 32779397). PI16 is a cysteine-rich protein that is widely expressed in human tissue (PMID: 18824526). PI16 is involved in extracellular matrix regulation, acts as a tumour suppressor gene and is a new independent prognostic marker of prostate cancer (PMID: 37525118, PMID: 17062675).

Notable Publications

Author	Pubmed ID	Journal	Application
Xiangqin Kuang	37525118	Cell Mol Biol Lett	WB, IHC, CoIP

Storage

Storage:

Store at -20°C. Stable for one year after shipment.

Storage Buffer:

PBS with 0.02% sodium azide and 50% glycerol, pH7.3

Aliquoting is unnecessary for -20°C storage

*** 20ul sizes contain 0.1% BSA

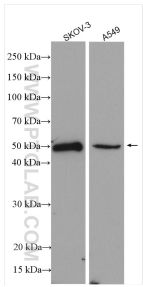
For technical support and original validation data for this product please contact:

T: 1 (888) 4PTGLAB (1-888-478-4522) (toll free in USA), or 1(312) 455-8498 (outside USA)

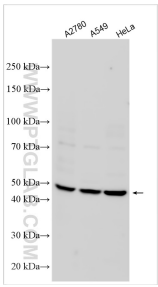
E: proteintech@ptglab.com
W: ptglab.com

This product is exclusively available under Proteintech Group brand and is not available to purchase from any other manufacturer.

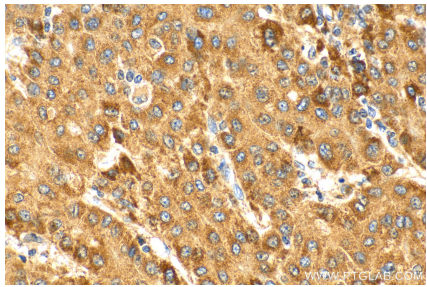
Selected Validation Data



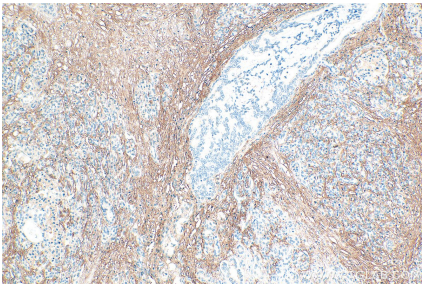
Various lysates were subjected to SDS PAGE followed by western blot with 12267-1-AP (PI 16 antibody) at dilution of 1:1000 incubated at room temperature for 1.5 hours.



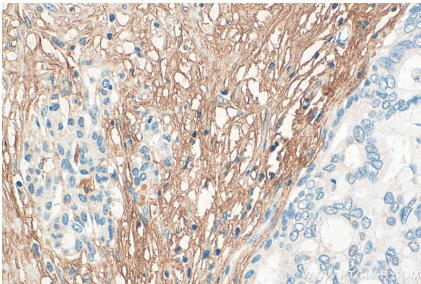
Various lysates were subjected to SDS PAGE followed by western blot with 12267-1-AP (PI 16 antibody) at dilution of 1:1000 incubated at room temperature for 1.5 hours.



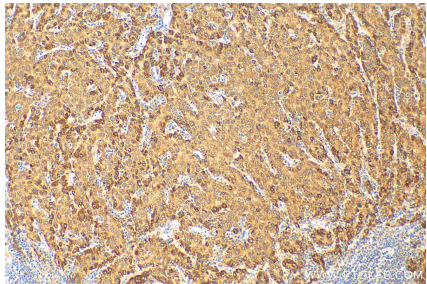
Immunohistochemical analysis of paraffin-embedded human liver cancer tissue slide using 12267-1-AP (PI 16 antibody) at dilution of 1:200 (under 40x lens). Heat mediated antigen retrieval with Tris-EDTA buffer (pH 9.0).



Immunohistochemical analysis of paraffin-embedded human pancreas cancer tissue slide using 12267-1-AP (PI 16 antibody) at dilution of 1:200 (under 10x lens). Heat mediated antigen retrieval with Tris-EDTA buffer (pH 9.0).



Immunohistochemical analysis of paraffin-embedded human pancreas cancer tissue slide using 12267-1-AP (PI 16 antibody) at dilution of 1:200 (under 40x lens). Heat mediated antigen retrieval with Tris-EDTA buffer (pH 9.0).



Immunohistochemical analysis of paraffin-embedded human liver cancer tissue slide using 12267-1-AP (PI 16 antibody) at dilution of 1:200 (under 10x lens). Heat mediated antigen retrieval with Tris-EDTA buffer (pH 9.0).