

For Research Use Only

# Clusterin Polyclonal antibody

Catalog Number: 12289-1-AP

28 Publications



## Basic Information

### Catalog Number:

12289-1-AP

### Size:

150ul, Concentration: 400 ug/ml by Nanodrop;

### Source:

Rabbit

### Isotype:

IgG

### Immunogen Catalog Number:

AG2889

### GenBank Accession Number:

BC010514

### GeneID (NCBI):

1191

### UNIPROT ID:

P10909

### Full Name:

clusterin

### Calculated MW:

449 aa, 53 kDa

### Observed MW:

37 kDa

### Purification Method:

Antigen affinity purification

### Recommended Dilutions:

WB: 1:2000-1:12000

IHC: 1:300-1:1200

IF-P: 1:50-1:500

IF/ICC: 1:50-1:500

## Applications

### Tested Applications:

WB, IHC, IF/ICC, IF-P, ELISA

### Cited Applications:

WB, IHC, IF, ColP

### Species Specificity:

human

### Cited Species:

human, rabbit

**Note-IHC: suggested antigen retrieval with TE buffer pH 9.0; (\*) Alternatively, antigen retrieval may be performed with citrate buffer pH 6.0**

### Positive Controls:

WB : human plasma,

IHC : human tonsillitis tissue, human breast cancer tissue, human liver cancer tissue

IF-P : human liver tissue, HeLa cells

IF/ICC : HeLa cells,

## Background Information

Clusterin (Apolipoprotein J) is a 75-80 kDa heterodimeric glycoprotein produced by a wide array of tissues and found in most biologic fluids (PMID: 7648419; 11906815). It is encoded by one single gene and cleaved posttranslationally into  $\alpha$  (34-36 kDa) and  $\beta$  (36-39 kDa) subunits prior to secretion from the cell. Many functions have been described for clusterin, including regulating apoptosis, transporting lipids, controlling cell interactions, regulating complement (PMID: 10694874).

## Notable Publications

Author	Pubmed ID	Journal	Application
Bo Ma	30235220	PLoS One	WB
Julia Kälisch	27709349	Int J Biometeorol	IHC
Lili Donner	27221710	Sci Signal	

## Storage

### Storage:

Store at -20°C. Stable for one year after shipment.

### Storage Buffer:

PBS with 0.02% sodium azide and 50% glycerol, pH7.3

Aliquoting is unnecessary for -20°C storage

\*\*\* 20ul sizes contain 0.1% BSA

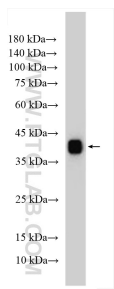
For technical support and original validation data for this product please contact:

T: 1 (888) 4PTGLAB (1-888-478-4522) (toll free in USA), or 1(312) 455-8498 (outside USA)

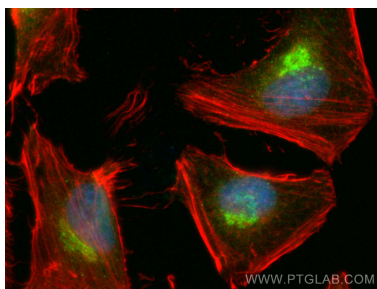
E: [proteintech@ptglab.com](mailto:proteintech@ptglab.com)  
W: [ptglab.com](http://ptglab.com)

This product is exclusively available under Proteintech Group brand and is not available to purchase from any other manufacturer.

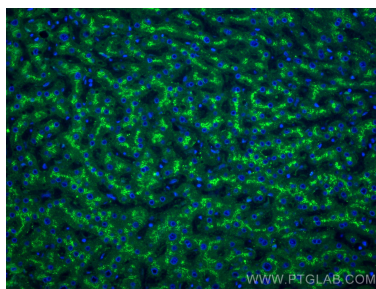
Selected Validation Data



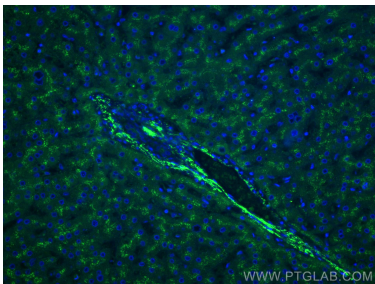
human plasma were subjected to SDS PAGE followed by western blot with 12289-1-AP (Clusterin antibody) at dilution of 1:6000 incubated at room temperature for 1.5 hours.



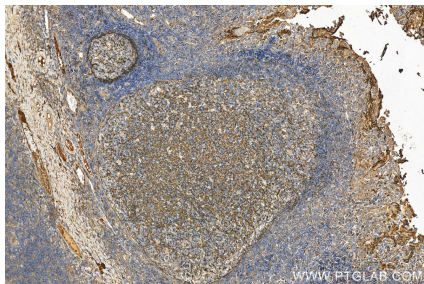
Immunofluorescent analysis of (4% PFA) fixed HeLa cells using Clusterin antibody (12289-1-AP) at dilution of 1:200 and CoraLite®488-Conjugated AffiniPure Goat Anti-Rabbit IgG(H+L), CL594-phalloidin (red).



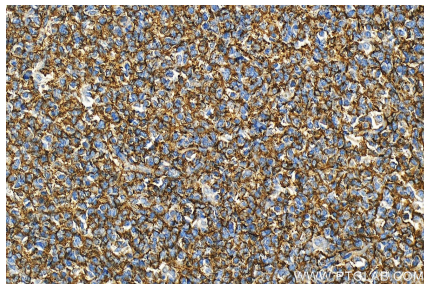
Immunofluorescent analysis of (4% PFA) fixed human liver tissue using Clusterin antibody (12289-1-AP) at dilution of 1:200 and CoraLite®488-Conjugated AffiniPure Goat Anti-Rabbit IgG(H+L).



Immunofluorescent analysis of (4% PFA) fixed human liver tissue using Clusterin antibody (12289-1-AP) at dilution of 1:200 and CoraLite®488-Conjugated AffiniPure Goat Anti-Rabbit IgG(H+L).



Immunohistochemical analysis of paraffin-embedded human tonsillitis tissue slide using 12289-1-AP (Clusterin antibody) at dilution of 1:600 (under 20x lens). Heat mediated antigen retrieval with Tris-EDTA buffer (pH 9.0).



Immunohistochemical analysis of paraffin-embedded human tonsillitis tissue slide using 12289-1-AP (Clusterin antibody) at dilution of 1:600 (under 20x lens). Heat mediated antigen retrieval with Tris-EDTA buffer (pH 9.0).