

For Research Use Only

CLIC4 Polyclonal antibody

Catalog Number: 12298-2-AP

Featured Product

1 Publications



Basic Information

Catalog Number:

12298-2-AP

Size:

150ul, Concentration: 350 ug/ml by Nanodrop and 200 ug/ml by Bradford method using BSA as the standard;

Source:

Rabbit

Isotype:

IgG

Immunogen Catalog Number:

AG2942

GenBank Accession Number:

BC012444

GeneID (NCBI):

25932

UNIPROT ID:

Q9Y696

Full Name:

chloride intracellular channel 4

Calculated MW:

253 aa, 29 kDa

Observed MW:

29 kDa

Purification Method:

Antigen affinity purification

Recommended Dilutions:

WB 1:500-1:1000

IHC 1:50-1:500

Applications

Tested Applications:

WB, IHC, ELISA

Cited Applications:

IHC

Species Specificity:

human, mouse, rat

Cited Species:

human

Positive Controls:

WB : mouse kidney tissue, human kidney tissue, HeLa cells, mouse ovary tissue

IHC : human kidney tissue,

Note-IHC: suggested antigen retrieval with TE buffer pH 9.0; (*) Alternatively, antigen retrieval may be performed with citrate buffer pH 6.0

Background Information

Chloride channels are a diverse group of proteins that regulate fundamental cellular processes including stabilization of cell membrane potential, transepithelial transport, maintenance of intracellular pH, and regulation of cell volume. CLIC4 is a p53- and tumor necrosis factor alpha-regulated cytoplasmic and mitochondrial protein that belongs to the CLIC family of intracellular chloride channels. CLICs have actions distinct from traditional cell membrane chloride channels, including formation of ion channels in intracellular organelles and roles in membrane trafficking, apoptosis, and cell differentiation.

Notable Publications

Author	Pubmed ID	Journal	Application
Zhichun Liu	39595145	Biomedicines	IHC

Storage

Storage:

Store at -20°C. Stable for one year after shipment.

Storage Buffer:

PBS with 0.02% sodium azide and 50% glycerol pH 7.3.

Aliquoting is unnecessary for -20°C storage

*** 20ul sizes contain 0.1% BSA

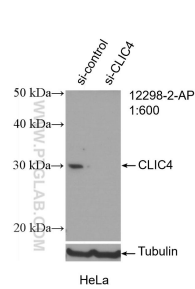
For technical support and original validation data for this product please contact:

T: 1 (888) 4PTGLAB (1-888-478-4522) (toll free in USA), or 1(312) 455-8498 (outside USA)

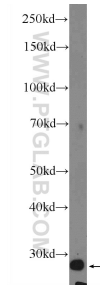
E: proteintech@ptglab.com
W: ptglab.com

This product is exclusively available under Proteintech Group brand and is not available to purchase from any other manufacturer.

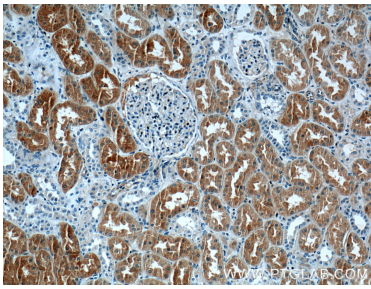
Selected Validation Data



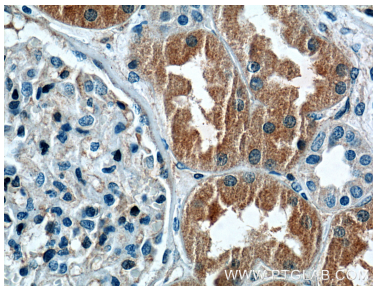
WB result of CLIC4 antibody (12298-2-AP; 1:600; incubated at room temperature for 1.5 hours) with sh-Control and sh-CLIC4 transfected HeLa cells.



mouse kidney tissue were subjected to SDS PAGE followed by western blot with 12298-2-AP (CLIC4 Antibody) at dilution of 1:600 incubated at room temperature for 1.5 hours.



Immunohistochemical analysis of paraffin-embedded human kidney tissue slide using 12298-2-AP (CLIC4 Antibody) at dilution of 1:200 (under 10x lens).



Immunohistochemical analysis of paraffin-embedded human kidney tissue slide using 12298-2-AP (CLIC4 Antibody) at dilution of 1:200 (under 40x lens).