

For Research Use Only

ITGB1BP1 Polyclonal antibody

Catalog Number: 12300-1-AP



Basic Information

Catalog Number:

12300-1-AP

Size:

150ul, Concentration: 700 ug/ml by Nanodrop and 333 ug/ml by Bradford method using BSA as the standard;

Source:

Rabbit

Isotype:

IgG

Immunogen Catalog Number:

AG2945

GenBank Accession Number:

BC012264

GeneID (NCBI):

9270

UNIPROT ID:

O14713

Full Name:

integrin beta 1 binding protein 1

Calculated MW:

200 aa, 22 kDa

Observed MW:

22 kDa

Purification Method:

Antigen affinity purification

Recommended Dilutions:

WB 1:200-1:1000

IP 0.5-4.0 ug for 1.0-3.0 mg of total protein lysate

IHC 1:20-1:200

IF/ICC 1:200-1:800

Applications

Tested Applications:

WB, IHC, IF/ICC, IP, ELISA

Species Specificity:

human, mouse, rat

Note-IHC: suggested antigen retrieval with TE buffer pH 9.0; (*) Alternatively, antigen retrieval may be performed with citrate buffer pH 6.0

Positive Controls:

WB : PC-3 cells, mouse thymus tissue, human brain tissue

IP : mouse thymus tissue,

IHC : human heart tissue, human colon tissue

IF/ICC : PC-3 cells,

Background Information

ITGB1BP1, also named as ICAP1, is a key regulator of the integrin-mediated cell-matrix interaction signaling by binding to the ITGB1 cytoplasmic tail. It plays a role in cell proliferation, differentiation, spreading, adhesion and migration in the context of mineralization and bone development and angiogenesis. ITGB1BP1 promotes transcriptional activity of the MYC promoter.

Storage

Storage:

Store at -20°C. Stable for one year after shipment.

Storage Buffer:

PBS with 0.02% sodium azide and 50% glycerol pH 7.3.

Aliquoting is unnecessary for -20°C storage

*** 20ul sizes contain 0.1% BSA

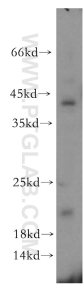
For technical support and original validation data for this product please contact:

T: 1 (888) 4PTGLAB (1-888-478-4522) (toll free in USA), or 1(312) 455-8498 (outside USA)

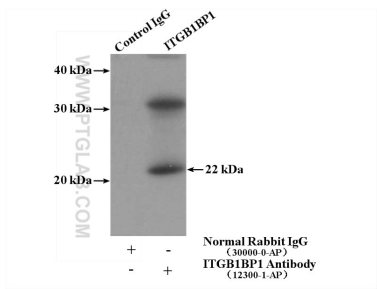
E: proteintech@ptglab.com
W: ptglab.com

This product is exclusively available under Proteintech Group brand and is not available to purchase from any other manufacturer.

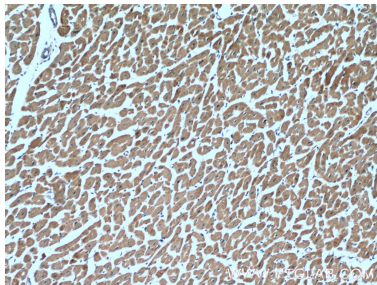
Selected Validation Data



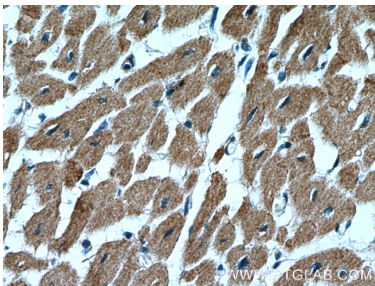
PC-3 cells were subjected to SDS PAGE followed by western blot with 12300-1-AP (ITGB1BP1 antibody) at dilution of 1:300 incubated at room temperature for 1.5 hours.



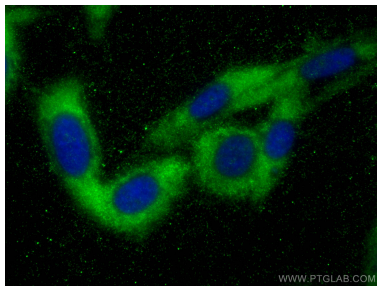
IP result of anti-ITGB1BP1 (IP:12300-1-AP, 4ug; Detection:12300-1-AP 1:300) with mouse thymus tissue lysate 2800ug.



Immunohistochemical analysis of paraffin-embedded human heart tissue slide using 12300-1-AP (ITGB1BP1 Antibody) at dilution of 1:200 (under 10x lens).



Immunohistochemical analysis of paraffin-embedded human heart tissue slide using 12300-1-AP (ITGB1BP1 Antibody) at dilution of 1:200 (under 40x lens).



Immunofluorescent analysis of (-20°C Ethanol) fixed PC-3 cells using ITGB1BP1 antibody (12300-1-AP) at dilution of 1:400 and CoraLite®488-Conjugated AffiniPure Goat Anti-Rabbit IgG(H+L) (SA00013-2).