

For Research Use Only

APLP1 Polyclonal antibody

Catalog Number: 12305-2-AP

4 Publications



Basic Information

Catalog Number:

12305-2-AP

Size:

150ul, Concentration: 300 ug/ml by Nanodrop and 167 ug/ml by Bradford method using BSA as the standard;

Source:

Rabbit

Isotype:

IgG

Immunogen Catalog Number:

AG2951

GenBank Accession Number:

BC012889

GeneID (NCBI):

333

UNIPROT ID:

P51693

Full Name:

amyloid beta (A4) precursor-like protein 1

Calculated MW:

650 aa, 72 kDa

Observed MW:

72 kDa

Purification Method:

Antigen affinity purification

Recommended Dilutions:

WB 1:500-1:2000

IP 0.5-4.0 ug for 1.0-3.0 mg of total protein lysate

IHC 1:20-1:200

Applications

Tested Applications:

WB, IP, IHC, ELISA

Cited Applications:

WB

Species Specificity:

human, mouse

Cited Species:

human, mouse

Positive Controls:

WB : mouse brain tissue,

IP : mouse brain tissue,

IHC : human brain tissue,

Note-IHC: suggested antigen retrieval with TE buffer pH 9.0; (*) Alternatively, antigen retrieval may be performed with citrate buffer pH 6.0

Notable Publications

Author	Pubmed ID	Journal	Application
Mahlon Angus Collins	26401960	J Proteome Res	WB
Bastian Dislich	26139848	Mol Cell Proteomics	WB
Sabrina Simoes	33239387	Sci Transl Med	WB

Storage

Storage:

Store at -20°C. Stable for one year after shipment.

Storage Buffer:

PBS with 0.02% sodium azide and 50% glycerol pH 7.3.

Aliquoting is unnecessary for -20°C storage

*** 20ul sizes contain 0.1% BSA

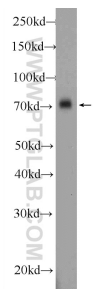
For technical support and original validation data for this product please contact:

T: 1 (888) 4PTGLAB (1-888-478-4522) (toll free in USA), or 1(312) 455-8498 (outside USA)

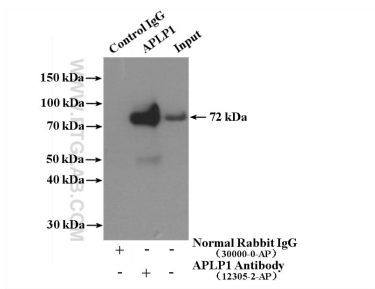
E: proteintech@ptglab.com
W: ptglab.com

This product is exclusively available under Proteintech Group brand and is not available to purchase from any other manufacturer.

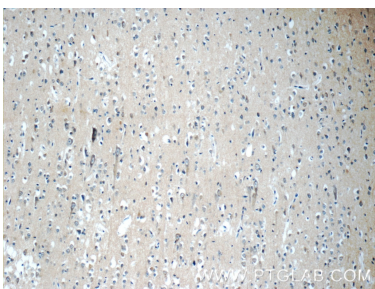
Selected Validation Data



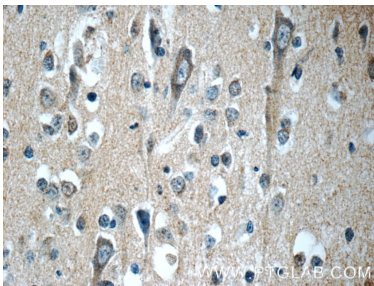
mouse brain tissue were subjected to SDS PAGE followed by western blot with 12305-2-AP (APLP1 Antibody) at dilution of 1:1000 incubated at room temperature for 1.5 hours.



IP result of anti-APLP1 (IP:12305-2-AP, 4ug; Detection:12305-2-AP 1:600) with mouse brain tissue lysate 3160 ug.



Immunohistochemical analysis of paraffin-embedded human brain tissue slide using 12305-2-AP (APLP1 Antibody) at dilution of 1:50 (under 10x lens).



Immunohistochemical analysis of paraffin-embedded human brain tissue slide using 12305-2-AP (APLP1 Antibody) at dilution of 1:50 (under 40x lens).