

For Research Use Only

# CHD2 Polyclonal antibody

Catalog Number: 12311-1-AP **2 Publications**



## Basic Information

|  |  |   |
|--|--|---|
| <b>Catalog Number:</b><br>12311-1-AP   | <b>GenBank Accession Number:</b><br>BC020810                     | <b>Purification Method:</b><br>Antigen affinity purification                              |
| <b>Size:</b><br>150ul , Concentration: 600 µg/ml by Nanodrop and 200 µg/ml by Bradford method using BSA as the standard; | <b>GeneID (NCBI):</b><br>1106                                    | <b>Recommended Dilutions:</b><br>WB 1:500-1:1000<br>IP 0.5-4.0 ug for IP and 1:200-1:1000 |
| <b>Source:</b><br>Rabbit   | <b>Full Name:</b><br>chromodomain helicase DNA binding protein 2 | <b>for WB</b><br>IHC 1:20-1:200   |
| <b>Isotype:</b><br>IgG   | <b>Calculated MW:</b><br>1828 aa, 211 kDa                        |   |
| <b>Immunogen Catalog Number:</b><br>AG2960   | <b>Observed MW:</b><br>95 kDa                                    |   |

## Applications

|   |                                    |
|---|------------------------------------|
| <b>Tested Applications:</b><br>IHC, IP, WB, ELISA | <b>Positive Controls:</b>          |
| <b>Cited Applications:</b><br>WB                  | <b>WB:</b> human placenta tissue,  |
| <b>Species Specificity:</b><br>human, rat         | <b>IP:</b> human placenta tissue,  |
| <b>Cited Species:</b><br>human, rat               | <b>IHC:</b> human lymphoma tissue, |

**Note-IHC: suggested antigen retrieval with TE buffer pH 9.0; (\*) Alternatively, antigen retrieval may be performed with citrate buffer pH 6.0**

## Background Information

Chromodomain-helicase-DNA-binding protein 2, also named as ATP-dependent helicase CHD2, CHD2. It is a sequence-selective DNA-binding protein. Molecular mass of CHD2 is 211kD (201kd for isoform 2, 57kd for isoform 3). CHD2 is confirmed around 95 kDa at the undifferentiated stage. This clearly indicated that CHD2 was involved in specific gene expression at this stage.

## Notable Publications

| Author       | Pubmed ID | Journal | Application |
|--------------|-----------|---------|-------------|
| Zhixiong Liu | 30876848  | Neuron  | WB          |
| Minbo Zhang  | 35891648  | PeerJ   | WB          |

## Storage

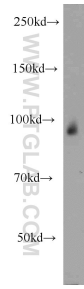
**Storage:**  
Store at -20°C. Stable for one year after shipment.  
**Storage Buffer:**  
PBS with 0.02% sodium azide and 50% glycerol pH 7.3.  
Aliquoting is unnecessary for -20°C storage

\*\*\* 20ul sizes contain 0.1% BSA

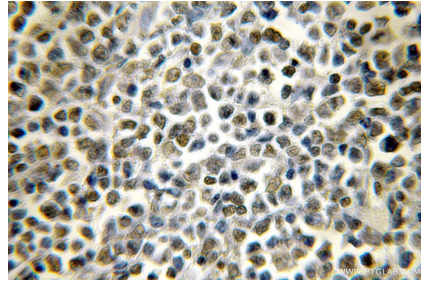
For technical support and original validation data for this product please contact:  
T: 1 (888) 4PTGLAB (1-888-478-4522) (toll free in USA), or 1(312) 455-8498 (outside USA)  
E: proteintech@ptglab.com  
W: ptglab.com

This product is exclusively available under Proteintech Group brand and is not available to purchase from any other manufacturer.

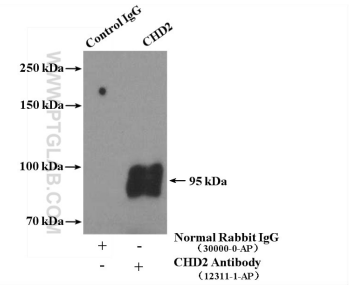
## Selected Validation Data



human placenta tissue were subjected to SDS PAGE followed by western blot with 12311-1-AP (CHD2 antibody) at dilution of 1:500 incubated at room temperature for 1.5 hours.



Immunohistochemical analysis of paraffin-embedded human lymphoma using 12311-1-AP (CHD2 antibody) at dilution of 1:50 (under 10x lens).



IP Result of anti-CHD2 (IP:12311-1-AP, 4ug; Detection:12311-1-AP 1:300) with human placenta tissue lysate 4000ug.