

For Research Use Only

KIN17 Polyclonal antibody

Catalog Number: 12313-1-AP



Basic Information

Catalog Number:

12313-1-AP

Size:

150ul, Concentration: 400 ug/ml by Nanodrop and 300 ug/ml by Bradford method using BSA as the standard;

Source:

Rabbit

Isotype:

IgG

Immunogen Catalog Number:

AG2963

GenBank Accession Number:

BC017309

GeneID (NCBI):

22944

UNIPROT ID:

O60870

Full Name:

KIN, antigenic determinant of recA protein homolog (mouse)

Calculated MW:

393 aa, 45 kDa

Observed MW:

40 kDa

Purification Method:

Antigen affinity purification

Recommended Dilutions:

WB 1:1000-1:4000

IP 0.5-4.0 ug for 1.0-3.0 mg of total protein lysate

IHC 1:50-1:500

IF/ICC 1:300-1:1200

Applications

Tested Applications:

WB, IHC, IF/ICC, IP, ELISA

Species Specificity:

human, mouse

Note-IHC: suggested antigen retrieval with TE buffer pH 9.0; (*) Alternatively, antigen retrieval may be performed with citrate buffer pH 6.0

Positive Controls:

WB: HeLa cells, human heart tissue

IP: mouse brain tissue,

IHC: human ovary cancer tissue,

IF/ICC: HeLa cells,

Background Information

KIN17 (also known as KIN) is an evolutionarily conserved zinc finger nuclear protein. It consists of three motifs, a zinc finger, a nuclear localization signal and a Kypries-Onzonis-Woese motif that mediates transcription elongation. KIN17 is ubiquitously expressed in human tissues and participates in DNA replication, DNA repair and cell cycle progression. Emerging evidence has indicated the importance of KIN17 in the pathogenesis and progression of tumors (PMID: 28454391). KIN17 has a calculated molecular weight of 45 kDa, this antibody is raised against human KIN17 and detects a band of about 40 kDa.

Storage

Storage:

Store at -20°C. Stable for one year after shipment.

Storage Buffer:

PBS with 0.02% sodium azide and 50% glycerol pH 7.3.

Aliquoting is unnecessary for -20°C storage

*** 20ul sizes contain 0.1% BSA

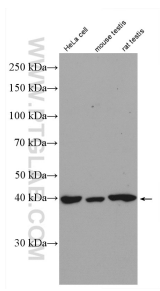
For technical support and original validation data for this product please contact:

T: 1 (888) 4PTGLAB (1-888-478-4522) (toll free in USA), or 1(312) 455-8498 (outside USA)

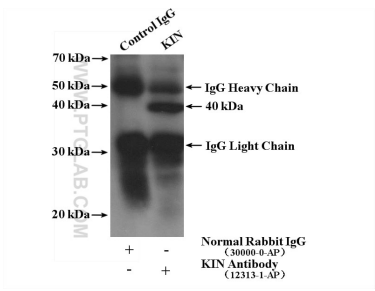
E: proteintech@ptglab.com
W: ptglab.com

This product is exclusively available under Proteintech Group brand and is not available to purchase from any other manufacturer.

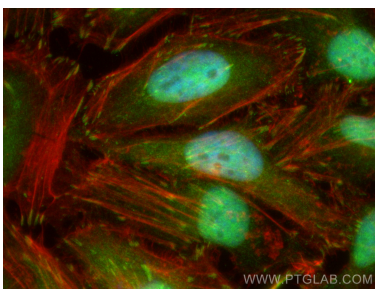
Selected Validation Data



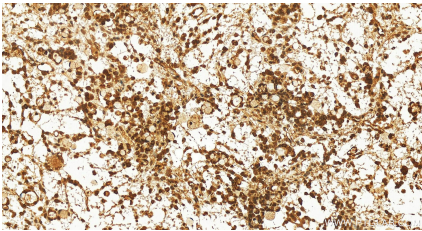
HeLa cells, mouse testis tissue, and rat testis tissue were subjected to SDS PAGE followed by western blot with 12313-1-AP (KIN17 antibody) at dilution of 1:2000 incubated at room temperature for 1.5 hours.



IP result of anti-KIN17 (IP:12313-1-AP, 4ug; Detection:12313-1-AP 1:500) with mouse brain tissue lysate 3160 ug.



Immunofluorescent analysis of (4% PFA) fixed HeLa cells using KIN17 antibody (12313-1-AP) at dilution of 1:600 and Multi-rAb CoraLite® Plus 488-Goat Anti-Rabbit Recombinant Secondary Antibody (H+L) (RGAR002), CL594-phalloidin (red).



Immunohistochemical analysis of paraffin-embedded human ovary cancer tissue slide using 12313-1-AP (KIN17 antibody) at dilution of 1:200 (under 20x lens). Heat mediated antigen retrieval with Tris-EDTA buffer (pH 9.0).