

For Research Use Only

RAB3D Polyclonal antibody

Catalog Number: 12320-1-AP

Featured Product

18 Publications



Basic Information

Catalog Number:

12320-1-AP

Size:

150ul, Concentration: 600 ug/ml by Nanodrop and 487 ug/ml by Bradford method using BSA as the standard;

Source:

Rabbit

Isotype:

IgG

Immunogen Catalog Number:

AG2973

GenBank Accession Number:

BC016471

GeneID (NCBI):

9545

UNIPROT ID:

O95716

Full Name:

RAB3D, member RAS oncogene family

Calculated MW:

219 aa, 24 kDa

Observed MW:

28 kDa

Purification Method:

Antigen affinity purification

Recommended Dilutions:

WB 1:500-1:2400

IP 0.5-4.0 ug for 1.0-3.0 mg of total protein lysate

IHC 1:400-1:1000

Applications

Tested Applications:

WB, IP, IHC, ELISA

Cited Applications:

WB, IF, IHC

Species Specificity:

human, mouse, rat

Cited Species:

human, goat, rat, mouse, pig, canine

Note-IHC: suggested antigen retrieval with TE buffer pH 9.0; (*) Alternatively, antigen retrieval may be performed with citrate buffer pH 6.0

Positive Controls:

WB : mouse lung tissue, A549 cells, human cerebellum tissue, human stomach tissue, mouse spleen tissue, mouse stomach tissue, SW 1990 cells

IP : SW 1990 cells,

IHC : human prostate cancer tissue, human breast cancer tissue

Background Information

Rab3D is a member of the Rab3 subfamily, which comprises four isoforms (Rab3A, Rab3B, Rab3C, and Rab3D). Rab3 proteins typically associate with secretory vesicles, including synaptic vesicles, and have been implicated in the control of regulated exocytosis. Rab3D is widely expressed in adipocytes, exocrine glands and several haematopoietic cells, where it localizes to secretory granules and vesicles.

Notable Publications

Author	Pubmed ID	Journal	Application
Jingsong Yu	36153645	Cell Biol Int	WB, IHC
Srikanth R Janga	30126300	Biomarkers	IF
Mizuka Kamoi	22962587	PLoS One	IHC

Storage

Storage:

Store at -20°C. Stable for one year after shipment.

Storage Buffer:

PBS with 0.02% sodium azide and 50% glycerol pH 7.3.

Aliquoting is unnecessary for -20°C storage

*** 20ul sizes contain 0.1% BSA

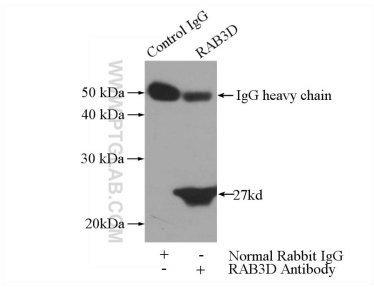
For technical support and original validation data for this product please contact:

T: 1 (888) 4PTGLAB (1-888-478-4522) (toll free in USA), or 1(312) 455-8498 (outside USA)

E: proteintech@ptglab.com
W: ptglab.com

This product is exclusively available under Proteintech Group brand and is not available to purchase from any other manufacturer.

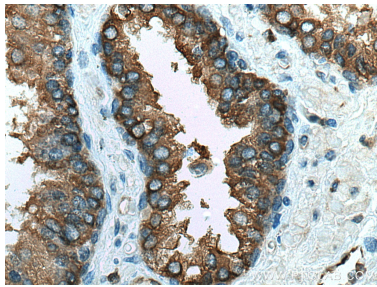
Selected Validation Data



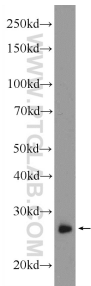
IP result of anti-RAB3D (IP:12320-1-AP, 3ug; Detection:12320-1-AP 1:600) with SW 1990 cells lysate 2400ug.



Immunohistochemical analysis of paraffin-embedded human prostate cancer tissue slide using 12320-1-AP (RAB3D antibody) at dilution of 1:800 (under 10x lens). Heat mediated antigen retrieval with Tris-EDTA buffer (pH 9.0).



Immunohistochemical analysis of paraffin-embedded human prostate cancer tissue slide using 12320-1-AP (RAB3D antibody) at dilution of 1:800 (under 40x lens). Heat mediated antigen retrieval with Tris-EDTA buffer (pH 9.0).



mouse lung tissue were subjected to SDS PAGE followed by western blot with 12320-1-AP (RAB3D Antibody) at dilution of 1:1200 incubated at room temperature for 1.5 hours.