

For Research Use Only

TAK1 Polyclonal antibody

Catalog Number: 12330-2-AP

Featured Product

49 Publications



Basic Information

Catalog Number:

12330-2-AP

Size:

150ul, Concentration: 287 ug/ml by Bradford method using BSA as the standard;

Source:

Rabbit

Isotype:

IgG

Immunogen Catalog Number:

AG3041

GenBank Accession Number:

BC017715

GeneID (NCBI):

6885

UNIPROT ID:

O43318

Full Name:

mitogen-activated protein kinase kinase kinase 7

Calculated MW:

579 aa, 64 kDa

Observed MW:

64-67 kDa, 75-80 kDa

Purification Method:

Antigen affinity purification

Recommended Dilutions:

WB 1:500-1:1000

IHC 1:100-1:400

IF/ICC 1:50-1:500

Applications

Tested Applications:

WB, IHC, IF/ICC, ELISA

Cited Applications:

WB, IHC, IF, IP, CoIP

Species Specificity:

human, mouse, hamster

Cited Species:

human, mouse, rat, pig, fish

Note-IHC: suggested antigen retrieval with TE buffer pH 9.0; (*) Alternatively, antigen retrieval may be performed with citrate buffer pH 6.0

Positive Controls:

WB: NIH/3T3 cells, K-562 cells, SKOV-3 cells, COLO 320 cells, A375 cells, A431 cells, CHO cells, MCF-7 cells, HeLa cells, mouse heart tissue, A2780 cells

IHC: human prostate cancer tissue, human brain tissue, mouse brain tissue

IF/ICC: NIH/3T3 cells,

Background Information

MAP3K7 (Mitogen-activated protein kinase kinase kinase 7) is also named as TAK1 and belongs to the MAP kinase kinase kinase subfamily. It plays an important role in the cascades of cellular responses evoked by changes in the environment. It has been linked to interleukin-1 receptor and tumor necrosis factor receptor signaling (PMID: 16186825). It has 4 isoforms (53-55 kDa; 64-70 kDa and 75-80 kDa) produced by alternative splicing.

Notable Publications

Author	Pubmed ID	Journal	Application
Mengqiu Yuan	34472622	EMBO J	WB
Wei Liu	34675006	Diabetes	WB
Yangwei Fan	30462562	Cancer Biol Ther	WB

Storage

Storage:

Store at -20°C. Stable for one year after shipment.

Storage Buffer:

PBS with 0.02% sodium azide and 50% glycerol pH 7.3.

Aliquoting is unnecessary for -20°C storage

*** 20ul sizes contain 0.1% BSA

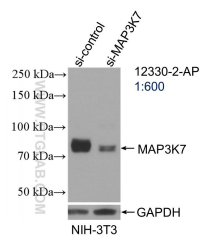
For technical support and original validation data for this product please contact:

T: 1 (888) 4PTGLAB (1-888-478-4522) (toll free in USA), or 1(312) 455-8498 (outside USA)

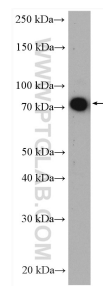
E: proteintech@ptglab.com
W: ptglab.com

This product is exclusively available under Proteintech Group brand and is not available to purchase from any other manufacturer.

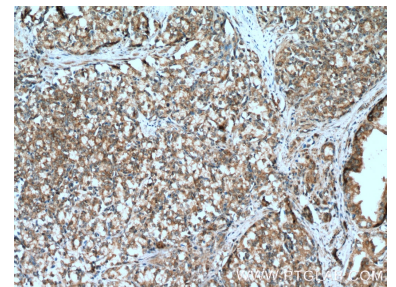
Selected Validation Data



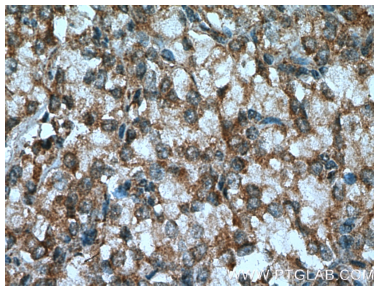
WB result of TAK1 antibody (12330-2-AP; 1:600; incubated at room temperature for 1.5 hours) with sh-Control and sh-TAK1 transfected NIH/3T3 cells.



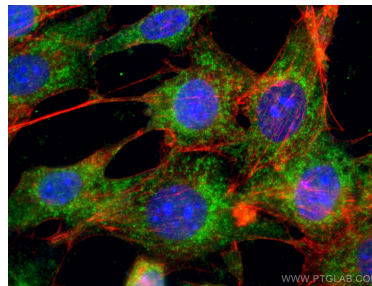
NIH/3T3 cells were subjected to SDS PAGE followed by western blot with 12330-2-AP (TAK1 antibody) at dilution of 1:600 incubated at room temperature for 1.5 hours.



Immunohistochemical analysis of paraffin-embedded human prostate cancer tissue slide using 12330-2-AP (TAK1 antibody at dilution of 1:200 (under 10x lens). Heat mediated antigen retrieval with Tris-EDTA buffer (pH 9.0).



Immunohistochemical analysis of paraffin-embedded human prostate cancer tissue slide using 12330-2-AP (TAK1 antibody at dilution of 1:200 (under 40x lens). Heat mediated antigen retrieval with Tris-EDTA buffer (pH 9.0).



Immunofluorescent analysis of (4% PFA) fixed NIH/3T3 cells using TAK1 antibody (12330-2-AP) at dilution of 1:100 and CoraLite®488-Conjugated Goat Anti-Rabbit IgG(H+L).