

For Research Use Only

IDH1 Polyclonal antibody

Catalog Number: 12332-1-AP

Featured Product

58 Publications



Basic Information

Catalog Number:

12332-1-AP

Size:

150ul, Concentration: 300 ug/ml by Nanodrop;

Source:

Rabbit

Isotype:

IgG

Immunogen Catalog Number:

AG2986

GenBank Accession Number:

BC012846

GeneID (NCBI):

3417

UNIPROT ID:

O75874

Full Name:

isocitrate dehydrogenase 1 (NADP+), soluble

Calculated MW:

414 aa, 47 kDa

Observed MW:

47 kDa

Purification Method:

Antigen affinity purification

Recommended Dilutions:

WB: 1:2000-1:10000

IP: 0.5-4.0 ug for 1.0-3.0 mg of total protein lysate

IHC: 1:50-1:500

IF/ICC: 1:50-1:500

Applications

Tested Applications:

WB, IHC, IF/ICC, IP, ELISA

Cited Applications:

WB, IHC, IF, IP, CoIP

Species Specificity:

human, mouse, rat

Cited Species:

human, mouse, sheep

Positive Controls:

WB: HEK-293 cells, HAP1 cells, rat liver tissue, HeLa cells, HepG2 cells, NIH/3T3 cells

IP: HepG2 cells,

IHC: human intrahepatic cholangiocarcinoma tissue, human liver cancer tissue

IF/ICC: HepG2 cells,

Note-IHC: suggested antigen retrieval with TE buffer pH 9.0; (*) Alternatively, antigen retrieval may be performed with citrate buffer pH 6.0

Background Information

IDH1, also named as PICD and IDP, belongs to the isocitrate and isopropylmalate dehydrogenases family. It is a common feature of a major subset of primary human brain cancers. It can form a homodimer(PMID:15173171). IDH1 mutation is always heterozygotic and IDH1 functions as a dimer, theoretically there will be 25% each wild type and mutant homo-dimers and 50% hetero-dimers present in the tumor cells(PMID:21079649).

Notable Publications

Author	Pubmed ID	Journal	Application
Ben Li	36290297	Biology (Basel)	WB
John P Morris	31534224	Nature	WB
Wenlong Zhao	36116152	Int Immunopharmacol	WB

Storage

Storage:

Store at -20°C. Stable for one year after shipment.

Storage Buffer:

PBS with 0.02% sodium azide and 50% glycerol, pH7.3

Aliquoting is unnecessary for -20°C storage

*** 20ul sizes contain 0.1% BSA

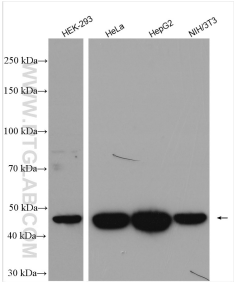
For technical support and original validation data for this product please contact:

T: 1 (888) 4PTGLAB (1-888-478-4522) (toll free in USA), or 1(312) 455-8498 (outside USA)

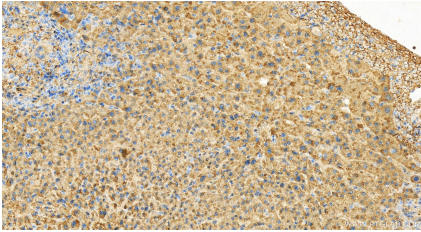
E: proteintech@ptglab.com
W: ptglab.com

This product is exclusively available under Proteintech Group brand and is not available to purchase from any other manufacturer.

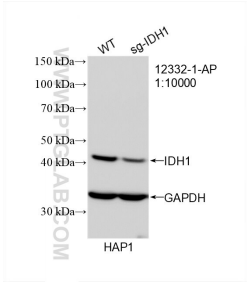
Selected Validation Data



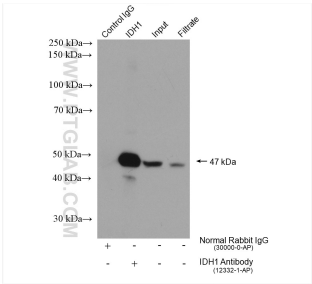
Various lysates were subjected to SDS PAGE followed by western blot with 12332-1-AP (IDH1 antibody) at dilution of 1:5000 incubated at room temperature for 1.5 hours.



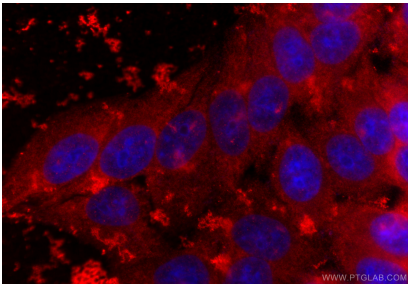
Immunohistochemical analysis of paraffin-embedded human intrahepatic cholangiocarcinoma tissue slide using 12332-1-AP (IDH1 antibody) at dilution of 1:200 (under 20x lens). Heat mediated antigen retrieval with Tris-EDTA buffer (pH 9.0).



WB result of IDH1 antibody (12332-1-AP; 1:10000; room temperature for 1.5 hours) with wild-type and IDH1 knockout HAP1 cells.



IP result of anti-IDH1 (IP:12332-1-AP, 4ug; Detection:12332-1-AP 1:500) with HepG2 cells lysate 1880 ug.



Immunofluorescent analysis of (-20°C Ethanol) fixed HepG2 cells using IDH1 antibody (12332-1-AP) at dilution of 1:200 and CoraLite®594-Conjugated Goat Anti-Rabbit IgG(H+L) (SA00013-4).