

For Research Use Only

SDPR Polyclonal antibody

Catalog Number: 12339-1-AP

Featured Product

17 Publications



Basic Information

Catalog Number:

12339-1-AP

Size:

150ul, Concentration: 600 ug/ml by Nanodrop and 333 ug/ml by Bradford method using BSA as the standard;

Source:

Rabbit

Isotype:

IgG

Immunogen Catalog Number:

AG2990

GenBank Accession Number:

BC016475

GeneID (NCBI):

8436

UNIPROT ID:

O95810

Full Name:

serum deprivation response (phosphatidylserine binding protein)

Calculated MW:

425 aa, 47 kDa

Observed MW:

68-70 kDa

Purification Method:

Antigen affinity purification

Recommended Dilutions:

WB 1:500-1:1000

IP 0.5-4.0 ug for 1.0-3.0 mg of total protein lysate

IHC 1:50-1:500

IF/ICC 1:50-1:500

Applications

Tested Applications:

WB, IHC, IF/ICC, IP, ELISA

Cited Applications:

WB, IHC, IF, IP, CoIP

Species Specificity:

human, mouse, rat

Cited Species:

human, mouse, rat

Note-IHC: suggested antigen retrieval with TE buffer pH 9.0; (*) Alternatively, antigen retrieval may be performed with citrate buffer pH 6.0

Positive Controls:

WB: A549 cells, mouse brain tissue, mouse liver tissue, COLO 320 cells, mouse placenta tissue, rat brain tissue, mouse heart tissue

IP: mouse heart tissue,

IHC: human renal cell carcinoma tissue, human breast hyperplasia tissue, human heart tissue, human kidney tissue, human normal colon, human tonsillitis tissue

IF/ICC: A549 cells,

Background Information

Serum deprivation-response protein (SDRP), a substrate of protein kinase C, is a member of a group of proteins that bind to phosphatidylserine in a calcium-dependent manner. SDRP may participate in the generation or stabilization of membrane curvature. SDRP is highly expressed in heart and lung, and low in brain, kidney, liver, pancreas, placenta and skeletal muscle. This is a rabbit polyclonal anti-SDRP antibody raised against C-terminus of human SDRP. SDRP of molecular masses 115 kDa and 100 kDa were found in neutrophils, monocytes, lymphocytes, platelets and erythrocytes. In platelets, however, the principal SDRP is a cytosolic protein of molecular mass 68 kDa. (PMID: 2390065)

Notable Publications

Author	Pubmed ID	Journal	Application
Gandhi T K Boopathy	28912276	J Biol Chem	WB, IF, IHC
Zhiwei Liao	34476937	ACS Nano	WB
Xiaotong Cen	36443833	Cell Commun Signal	WB

Storage

Storage:

Store at -20°C. Stable for one year after shipment.

Storage Buffer:

PBS with 0.02% sodium azide and 50% glycerol, pH7.3

Aliquoting is unnecessary for -20°C storage

*** 20ul sizes contain 0.1% BSA

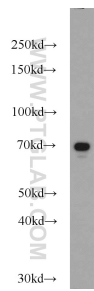
For technical support and original validation data for this product please contact:

T: 1 (888) 4PTGLAB (1-888-478-4522) (toll free in USA), or 1(312) 455-8498 (outside USA)

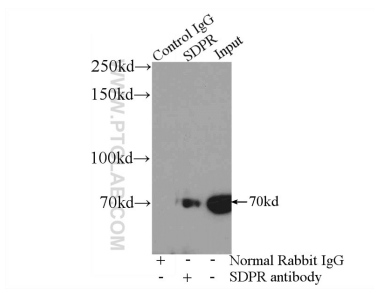
E: proteintech@ptglab.com
W: ptglab.com

This product is exclusively available under Proteintech Group brand and is not available to purchase from any other manufacturer.

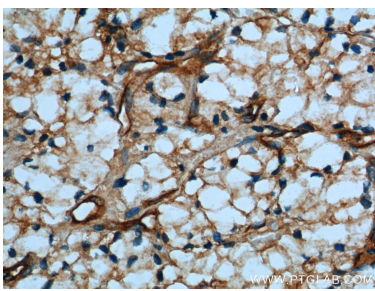
Selected Validation Data



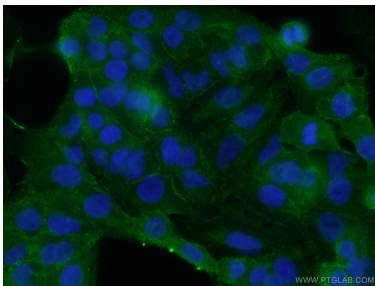
A549 cells were subjected to SDS PAGE followed by western blot with 12339-1-AP (SDPR antibody) at dilution of 1:1000 incubated at room temperature for 1.5 hours.



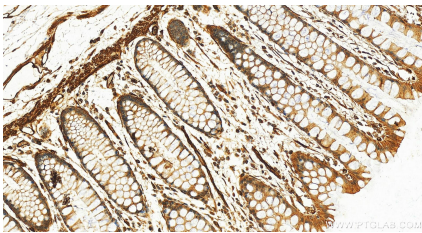
IP result of anti-SDPR (IP:12339-1-AP, 4ug; Detection:12339-1-AP 1:1000) with mouse heart tissue lysate 8000ug.



Immunohistochemical analysis of paraffin-embedded human renal cell carcinoma tissue slide using 12339-1-AP (SDPR Antibody) at dilution of 1:200 (under 40x lens).



Immunofluorescent analysis of (10% Formaldehyde) fixed A549 cells using 12339-1-AP (SDPR antibody) at dilution of 1:50 and Alexa Fluor 488-conjugated Goat Anti-Rabbit IgG(H+L).



Immunohistochemical analysis of paraffin-embedded human normal colon slide using 12339-1-AP (SDPR antibody) at dilution of 1:200 (under 20x lens). Heat mediated antigen retrieval with Tris-EDTA buffer (pH 9.0).