

For Research Use Only

SYTL2 Polyclonal antibody

Catalog Number: 12359-1-AP

Featured Product

2 Publications



Basic Information

Catalog Number:

12359-1-AP

Size:

150ul, Concentration: 407 ug/ml by Bradford method using BSA as the standard;

Source:

Rabbit

Isotype:

IgG

Immunogen Catalog Number:

AG3023

GenBank Accession Number:

BC015540

GeneID (NCBI):

54843

UNIPROT ID:

Q9HCH5

Full Name:

synaptotagmin-like 2

Calculated MW:

934 aa, 105 kDa

Observed MW:

39 kDa, 100-105 kDa

Purification Method:

Antigen affinity purification

Recommended Dilutions:

WB 1:500-1:3000

IHC 1:500-1:2000

Applications

Tested Applications:

WB, IHC, ELISA

Cited Applications:

WB, IHC

Species Specificity:

human, mouse, rat

Cited Species:

human

Positive Controls:

WB : A549 cells, Jurkat cells, MCF-7 cells

IHC : human breast cancer tissue,

Note-IHC: suggested antigen retrieval with TE buffer pH 9.0; (*) Alternatively, antigen retrieval may be performed with citrate buffer pH 6.0

Background Information

Synaptotagmin-like 2 (SYTL2) is a synaptotagmin-like protein (SLP) that belongs to a C2 domain-containing protein family. SYTL2 contains an N-terminal Slp homology domain (SHD), Rab-binding region, and C-terminal tandem C2 domains, C2A and C2B (PMID: 11327731). It interacts with RAB27A and plays a role in promoting docking of RAB27-bound organelles to the plasma membrane (PMID: 17052176). Alternative splicing of SYTL2 gene results in multiple transcript variants encoding distinct isoforms with calculated molecular weights ranging from 39 kDa to 142 kDa.

Notable Publications

Author	Pubmed ID	Journal	Application
Xi Chen	36482876	J Extracell Vesicles	WB
Miwa Tanaka	37029109	Nat Commun	IHC

Storage

Storage:

Store at -20°C. Stable for one year after shipment.

Storage Buffer:

PBS with 0.02% sodium azide and 50% glycerol pH 7.3.

Aliquoting is unnecessary for -20°C storage

*** 20ul sizes contain 0.1% BSA

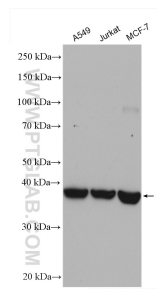
For technical support and original validation data for this product please contact:

T: 1 (888) 4PTGLAB (1-888-478-4522) (toll free in USA), or 1(312) 455-8498 (outside USA)

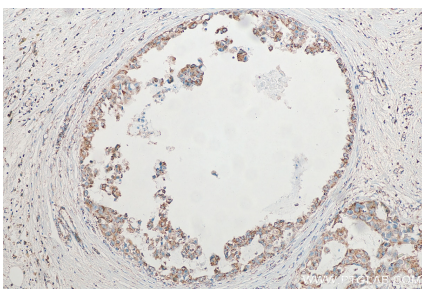
E: proteintech@ptglab.com
W: ptglab.com

This product is exclusively available under Proteintech Group brand and is not available to purchase from any other manufacturer.

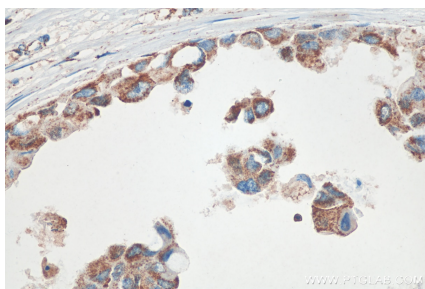
Selected Validation Data



Various lysates were subjected to SDS PAGE followed by western blot with 12359-1-AP (SYTL2 antibody) at dilution of 1:1500 incubated at room temperature for 1.5 hours.



Immunohistochemical analysis of paraffin-embedded human breast cancer tissue slide using 12359-1-AP (SYTL2 antibody) at dilution of 1:1000 (under 10x lens). Heat mediated antigen retrieval with Tris-EDTA buffer (pH 9.0).



Immunohistochemical analysis of paraffin-embedded human breast cancer tissue slide using 12359-1-AP (SYTL2 antibody) at dilution of 1:1000 (under 40x lens). Heat mediated antigen retrieval with Tris-EDTA buffer (pH 9.0).