

For Research Use Only

MAT1A/MAT2A Polyclonal antibody

Catalog Number: 12395-1-AP

8 Publications



Basic Information

Catalog Number:

12395-1-AP

Size:

150ul, Concentration: 400 ug/ml by Nanodrop and 200 ug/ml by Bradford method using BSA as the standard;

Source:

Rabbit

Isotype:

IgG

Immunogen Catalog Number:

AG3076

GenBank Accession Number:

BC018359

GeneID (NCBI):

4143

UNIPROT ID:

Q00266

Full Name:

methionine adenosyltransferase I, alpha

Calculated MW:

395 aa, 44 kDa

Observed MW:

44-55 kDa

Purification Method:

Antigen affinity purification

Recommended Dilutions:

WB 1:1000-1:4000

IHC 1:50-1:500

Applications

Tested Applications:

WB, IHC, ELISA

Cited Applications:

WB, IHC

Species Specificity:

human, mouse, rat, arabidopsis

Cited Species:

human, mouse, rat

Note-IHC: suggested antigen retrieval with TE buffer pH 9.0; (*) Alternatively, antigen retrieval may be performed with citrate buffer pH 6.0

Positive Controls:

WB : mouse liver tissue, HepG2 cells, HCT 116 cells, arabidopsis whole plant tissue, rat liver tissue

IHC : mouse liver tissue,

Background Information

Methionine adenosyltransferase (MAT) is the enzyme that catalyzes the synthesis of S-adenosylmethionine (AdoMet), the main donor of methyl groups in the cell. In mammals MAT is encoded by two different genes, MAT1A and MAT2A. MAT1A is expressed only in the mature liver whereas fetal hepatocytes, extrahepatic tissues and liver cancer cells express MAT2A. This antibody was raised against the full length of human MAT1A and can recognize both of MAT1A and MAT2A. Western blot analysis using this antibody detected a single band around 44-50 kDa in liver.

Notable Publications

Author	Pubmed ID	Journal	Application
Vitvitsky Victor V	23707637	Mech Ageing Dev	WB
Minjian Chen	24449424	Toxicol Sci	WB
Jihyun An	29448301	J Surg Oncol	IHC

Storage

Storage:

Store at -20°C. Stable for one year after shipment.

Storage Buffer:

PBS with 0.02% sodium azide and 50% glycerol pH 7.3.

Aliquoting is unnecessary for -20°C storage

*** 20ul sizes contain 0.1% BSA

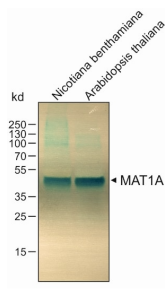
For technical support and original validation data for this product please contact:

T: 1 (888) 4PTGLAB (1-888-478-4522) (toll free in USA), or 1(312) 455-8498 (outside USA)

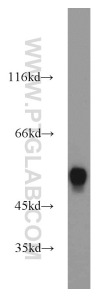
E: proteintech@ptglab.com
W: ptglab.com

This product is exclusively available under Proteintech Group brand and is not available to purchase from any other manufacturer.

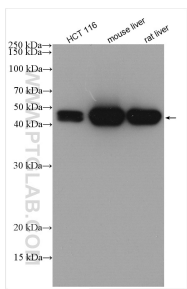
Selected Validation Data



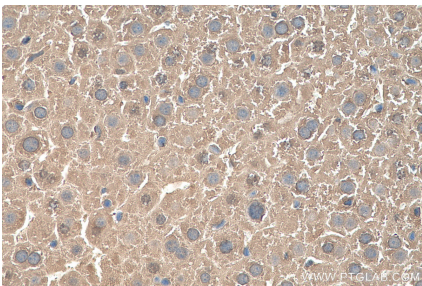
WB result of MAT1A antibody (12395-1-AP, 1:5000) with plant leaf tissue samples.



mouse liver tissue were subjected to SDS PAGE followed by western blot with 12395-1-AP (MAT1A antibody) at dilution of 1:1000 incubated at room temperature for 1.5 hours.



Various lysates were subjected to SDS PAGE followed by western blot with 12395-1-AP (MAT1A/MAT2A antibody) at dilution of 1:10000 incubated at room temperature for 1.5 hours.



Immunohistochemical analysis of paraffin-embedded mouse liver tissue slide using 12395-1-AP (MAT1A/MAT2A antibody) at dilution of 1:200 (under 40x lens). Heat mediated antigen retrieval with Tris-EDTA buffer (pH 9.0).