

For Research Use Only

# MAGEB1 Polyclonal antibody

Catalog Number: 12400-1-AP



## Basic Information

**Catalog Number:**

12400-1-AP

**Size:**

150ul , Concentration: 600 µg/ml by Nanodrop and 340 µg/ml by Bradford method using BSA as the standard;

**Source:**

Rabbit

**Isotype:**

IgG

**Immunogen Catalog Number:**

AG3094

**GenBank Accession Number:**

BC013772

**GeneID (NCBI):**

4112

**UNIPROT ID:**

P43366

**Full Name:**

melanoma antigen family B, 1

**Calculated MW:**

347 aa, 39 kDa

**Observed MW:**

43-45 kDa

**Purification Method:**

Antigen affinity purification

**Recommended Dilutions:**

WB 1:500-1:2000

IP 0.5-4.0 ug for 1.0-3.0 mg of total protein lysate

IF 1:200-1:800

## Applications

**Tested Applications:**

WB, IP, IF, ELISA

**Species Specificity:**

human

**Positive Controls:**

WB : HepG2 cells, A375 cells

IP : HepG2 cells,

IF : HepG2 cells, A375 cells

## Background Information

MAGEB1, also named as MAGEL1, MAGEXP, DAM10 and CT3.1, is a member of the MAGEB gene family. MAGE genes encode for tumor-rejection antigens and are expressed in tumors of different histologic types and Testis/placenta, but not in other normal tissues. The MW of MAGEB1 is about 40-45kd.

## Storage

**Storage:**

Store at -20°C. Stable for one year after shipment.

**Storage Buffer:**

PBS with 0.02% sodium azide and 50% glycerol pH 7.3.

Aliquoting is unnecessary for -20°C storage

\*\*\* 20ul sizes contain 0.1% BSA

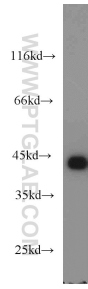
For technical support and original validation data for this product please contact:

T: 1 (888) 4PTGLAB (1-888-478-4522) (toll free in USA), or 1(312) 455-8498 (outside USA)

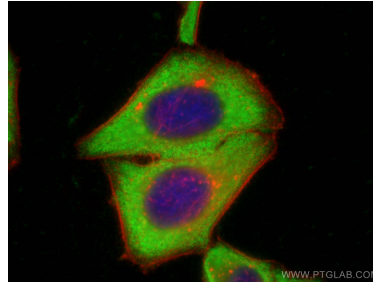
E: proteintech@ptglab.com  
W: ptglab.com

This product is exclusively available under Proteintech Group brand and is not available to purchase from any other manufacturer.

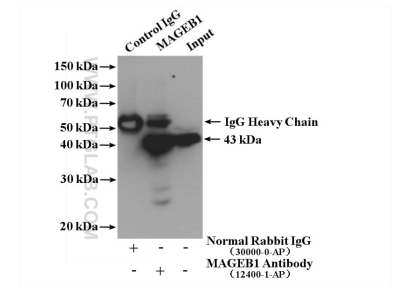
## Selected Validation Data



HepG2 cells were subjected to SDS PAGE followed by western blot with 12400-1-AP (MAGEB1 antibody) at dilution of 1:2000 incubated at room temperature for 1.5 hours.



Immunofluorescent analysis of (-20°C Ethanol) fixed HepG2 cells using MAGEB1 antibody (12400-1-AP) at dilution of 1:400 and CoraLite® 488-Conjugated AffiniPure Goat Anti-Rabbit IgG(H+L), CL594-phalloidin (red).



IP result of anti-MAGEB1 (IP:12400-1-AP, 4ug; Detection:12400-1-AP 1:2000) with HepG2 cells lysate 3360 ug.