

For Research Use Only

SGCE Polyclonal antibody

Catalog Number: 12407-1-AP

1 Publications



Basic Information

Catalog Number:

12407-1-AP

Size:

150ul , Concentration: 350 ug/ml by Nanodrop and 207 ug/ml by Bradford method using BSA as the standard;

Source:

Rabbit

Isotype:

IgG

Immunogen Catalog Number:

AG3118

GenBank Accession Number:

BC021709

GeneID (NCBI):

8910

UNIPROT ID:

O43556

Full Name:

sarcoglycan, epsilon

Calculated MW:

437 aa, 50 kDa

Observed MW:

50 kDa

Purification Method:

Antigen affinity purification

Recommended Dilutions:

WB 1:500-1:1000

IP 0.5-4.0 ug for 1.0-3.0 mg of total protein lysate

IHC 1:50-1:500

Applications

Tested Applications:

WB, IHC, IP, ELISA

Cited Applications:

WB

Species Specificity:

human, mouse, rat

Cited Species:

mouse

Note-IHC: suggested antigen retrieval with TE buffer pH 9.0; (*) Alternatively, antigen retrieval may be performed with citrate buffer pH 6.0

Positive Controls:

WB : mouse brain tissue, human brain tissue, human heart tissue, mouse heart tissue

IP : mouse heart tissue,

IHC : human stomach cancer tissue,

Notable Publications

Author	Pubmed ID	Journal	Application
Fumiaki Yokoi	20627944	J Biochem	WB

Storage

Storage:

Store at -20°C. Stable for one year after shipment.

Storage Buffer:

PBS with 0.02% sodium azide and 50% glycerol pH 7.3.

Aliquoting is unnecessary for -20°C storage

*** 20ul sizes contain 0.1% BSA

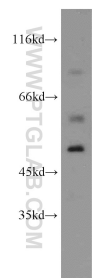
For technical support and original validation data for this product please contact:

T: 1 (888) 4PTGLAB (1-888-478-4522) (toll free in USA), or 1(312) 455-8498 (outside USA)

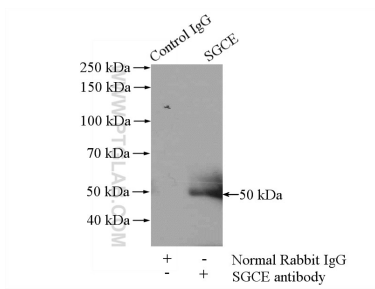
E: proteintech@ptglab.com
W: ptglab.com

This product is exclusively available under Proteintech Group brand and is not available to purchase from any other manufacturer.

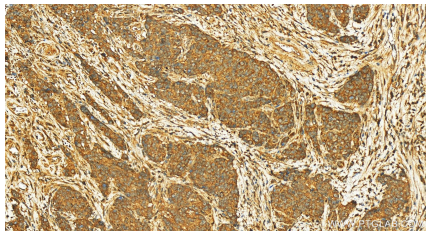
Selected Validation Data



mouse brain tissue were subjected to SDS PAGE followed by western blot with 12407-1-AP (SGCE antibody) at dilution of 1:500 incubated at room temperature for 1.5 hours.



IP result of anti-SGCE (IP:12407-1-AP, 4ug; Detection:12407-1-AP 1:500) with mouse heart tissue lysate 4000ug.



Immunohistochemical analysis of paraffin-embedded human stomach cancer tissue slide using 12407-1-AP (SGCE antibody) at dilution of 1:100 (under 20x lens). Heat mediated antigen retrieval with Sodium Citrate buffer (pH 6.0).