

For Research Use Only

EDF1 Polyclonal antibody

Catalog Number: 12419-1-AP

Featured Product

4 Publications



Basic Information

Catalog Number:

12419-1-AP

Size:

150ul, Concentration: 900 ug/ml by Nanodrop;

Source:

Rabbit

Isotype:

IgG

Immunogen Catalog Number:

AG3063

GenBank Accession Number:

BC015500

GeneID (NCBI):

8721

UNIPROT ID:

O60869

Full Name:

endothelial differentiation-related factor 1

Calculated MW:

148 aa, 16 kDa

Observed MW:

18-20 kDa

Purification Method:

Antigen affinity purification

Recommended Dilutions:

WB 1:500-1:3000

IP 0.5-4.0 ug for 1.0-3.0 mg of total protein lysate

IHC 1:20-1:200

Applications

Tested Applications:

WB, IP, IHC, ELISA

Cited Applications:

WB, IP

Species Specificity:

human, mouse

Cited Species:

human, mouse

Note-IHC: suggested antigen retrieval with TE buffer pH 9.0; (*) Alternatively, antigen retrieval may be performed with citrate buffer pH 6.0

Positive Controls:

WB: Jurkat cells, A549 cells, mouse pancreas tissue

IP: Jurkat cells,

IHC: human prostate cancer tissue,

Notable Publications

Author	Pubmed ID	Journal	Application
Xu-Yun Zhao	30061575	Nat Commun	WB, IP
Matthias Höllerhage	35481270	Front Neurol	WB
Shiyu Luo	38966981	Dis Model Mech	WB

Storage

Storage:

Store at -20°C. Stable for one year after shipment.

Storage Buffer:

PBS with 0.02% sodium azide and 50% glycerol pH 7.3.

Aliquoting is unnecessary for -20°C storage

*** 20ul sizes contain 0.1% BSA

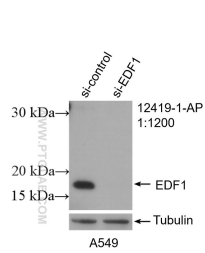
For technical support and original validation data for this product please contact:

T: 1 (888) 4PTGLAB (1-888-478-4522) (toll free in USA), or 1(312) 455-8498 (outside USA)

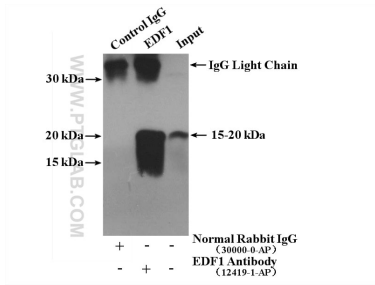
E: proteintech@ptglab.com
W: ptglab.com

This product is exclusively available under Proteintech Group brand and is not available to purchase from any other manufacturer.

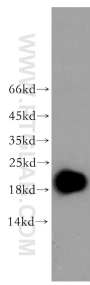
Selected Validation Data



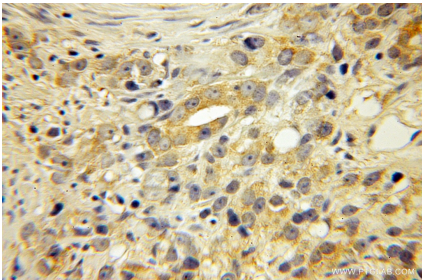
WB result of EDF1 antibody (12419-1-AP; 1:1200; incubated at room temperature for 1.5 hours) with sh-Control and sh-EDF1 transfected A549 cells.



IP result of anti-EDF1 (IP:12419-1-AP, 4ug; Detection:12419-1-AP 1:500) with Jurkat cells lysate 2920 ug.



Jurkat cells were subjected to SDS PAGE followed by western blot with 12419-1-AP (EDF1 antibody) at dilution of 1:500 incubated at room temperature for 1.5 hours.



Immunohistochemical analysis of paraffin-embedded human prostate cancer using 12419-1-AP (EDF1 antibody) at dilution of 1:50 (under 10x lens).