

## SLC20A1 Polyclonal antibody

Catalog Number: 12423-1-AP

11 Publications

## Basic Information

<b>Catalog Number:</b> 12423-1-AP	<b>GenBank Accession Number:</b> BC019944	<b>Purification Method:</b> Antigen affinity purification
<b>Size:</b> 150ul , Concentration: 1000 µg/ml by Nanodrop;	<b>GeneID (NCBI):</b> 6574	<b>Recommended Dilutions:</b> WB 1:500-1:1000 IP 0.5-4.0 ug for 1.0-3.0 mg of total protein lysate IHC 1:50-1:500
<b>Source:</b> Rabbit	<b>Full Name:</b> solute carrier family 20 (phosphate transporter), member 1	
<b>Isotype:</b> IgG	<b>Calculated MW:</b> 679 aa, 74 kDa	
<b>Immunogen Catalog Number:</b> AG3084	<b>Observed MW:</b> 85 kDa	

## Applications

<b>Tested Applications:</b> IHC, IP, WB, ELISA	<b>Positive Controls:</b>
<b>Cited Applications:</b> FC, IF, IHC, WB	<b>WB:</b> HEK-293 cells, HeLa cells, human kidney tissue, Jurkat cells, K-562 cells
<b>Species Specificity:</b> human	<b>IP:</b> HEK-293 cells,
<b>Cited Species:</b> human, rat, mouse, zebrafish	<b>IHC:</b> human liver tissue, human breast cancer tissue, human lymphoma tissue

**Note-IHC: suggested antigen retrieval with TE buffer pH 9.0; (\*) Alternatively, antigen retrieval may be performed with citrate buffer pH 6.0**

## Background Information

SLC20A1 (also known as PiT1) is a high-affinity sodium-dependent phosphate (Pi) import protein. It is widely expressed and plays a fundamental housekeeping role in phosphate transport, such as absorbing phosphate from interstitial fluid for normal cellular functions. SLC20A1 is involved in cell proliferation, tumor growth and cell signaling independently of its transport function. SLC20A1 also functions as a retroviral receptor, causing human cells to be susceptible to infection by gibbon ape leukemia virus, simian sarcoma-associated virus, feline leukemia virus subgroup B, and 10A1 murine leukemia virus.

## Notable Publications

Author	Pubmed ID	Journal	Application
Nhung Thi Nguyen	33095057	Am J Physiol Heart Circ Physiol	WB
Ping Wang	33439323	Calcif Tissue Int	WB
Nina Bon	29233890	J Biol Chem	WB

## Storage

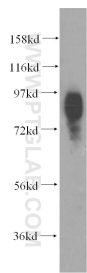
**Storage:**  
Store at -20°C. Stable for one year after shipment.  
**Storage Buffer:**  
PBS with 0.02% sodium azide and 50% glycerol pH 7.3.  
**Aliquoting is unnecessary for -20°C storage**

\*\*\* 20ul sizes contain 0.1% BSA

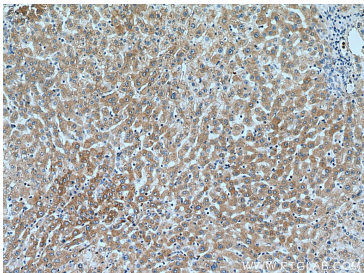
For technical support and original validation data for this product please contact:  
 T: 1 (888) 4PTGLAB (1-888-478-4522) (toll free in USA), or 1(312) 455-8498 (outside USA)  
 E: [proteintech@ptglab.com](mailto:proteintech@ptglab.com)  
 W: [ptglab.com](http://ptglab.com)

This product is exclusively available under Proteintech Group brand and is not available to purchase from any other manufacturer.

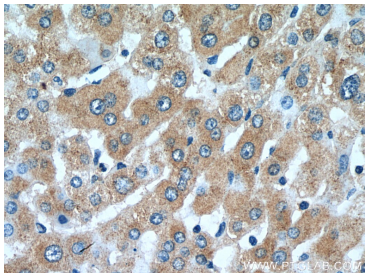
Selected Validation Data



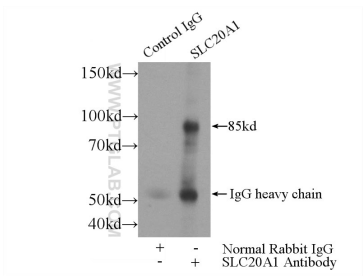
HEK-293 cells were subjected to SDS PAGE followed by western blot with 12423-1-AP (SLC20A1 antibody) at dilution of 1:500 incubated at room temperature for 1.5 hours.



Immunohistochemical analysis of paraffin-embedded human liver tissue slide using 12423-1-AP (SLC20A1 antibody) at dilution of 1:200 (under 10x lens). Heat mediated antigen retrieval with Tris-EDTA buffer (pH 9.0).



Immunohistochemical analysis of paraffin-embedded human liver tissue slide using 12423-1-AP (SLC20A1 antibody) at dilution of 1:200 (under 40x lens). Heat mediated antigen retrieval with Tris-EDTA buffer (pH 9.0).



IP Result of anti-SLC20A1 (IP:12423-1-AP, 4ug; Detection:12423-1-AP 1:500) with HEK-293 cells lysate 2800ug.